



MLS 6582035 Residential

\$250,000

2,738 sq ft
5 bedrooms
2 baths

26992 County Road 12
Sebeka MN 56477

Status: Active

Description:

Welcome to your ideal retreat in Sebeka, MN! This charming 5-bedroom, 2-bathroom home sits on 10 peaceful acres and features hardwood floors throughout. The main level hosts the primary bedroom and bathroom, plus 2 additional bedrooms and a full bathroom. The open-concept living and dining area is perfect for entertaining and family gatherings. The finished basement adds extra living space for your needs. Enjoy the outdoors with mature apple trees and 2 large outbuildings for all your storage and hobby needs.

Located near public hunting land, this property offers the perfect blend of comfort and nature. Don't miss out on this exceptional country haven!

Additional Details:

Year Built	2008
Lot Acres	10
Lot Dimensions	Irregular
Garage Stalls	6
School District	820
Taxes	\$450
Taxes with Assessments	\$450
Tax Year	2024

Additional Features:

Basement: Finished **Fuel:** Natural Gas **Garage:** 6 **Heat:** Forced Air **Sewer:** Private Sewer **Water:** Well **Air Conditioning:** None

Driving Directions:

County Rd 12 to property



Listed By:
RE/MAX Advantage Plus

Affinity Real Estate Inc. participates in the Regional Multiple Listing Service of Minnesota, Inc Broker Reciprocity (sm) program, allowing us to display other broker's listings on our website. All properties are subject to prior sale, change or withdrawal.



Call Affinity Real Estate

218-237-3333

info@affinityrealestate.com



Affinity Real Estate - 600 Park Avenue South - Park Rapids MN 56470



website: www.AffinityRealEstate.com | email: info@affinityrealestate.com | office: 218-237-3333 | fax: 218-237-3377

Affinity
REAL ESTATE INC

\$250,000
MLS 6582035 Residential
26992 County Road 12
Sebeka MN 56477



website: www.AffinityRealEstate.com | email: info@affinityrealestate.com | office: 218-237-3333 | fax:218-237-3377

Affinity
REAL ESTATE INC

\$250,000
MLS 6582035 Residential
26992 County Road 12
Sebeka MN 56477



website: www.AffinityRealEstate.com | email: info@affinityrealestate.com | office: 218-237-3333 | fax:218-237-3377

Affinity
REAL ESTATE INC

\$250,000
MLS 6582035 Residential
26992 County Road 12
Sebeka MN 56477



website: www.AffinityRealEstate.com | email: info@affinityrealestate.com | office: 218-237-3333 | fax: 218-237-3377

Affinity
REAL ESTATE INC

\$250,000
MLS 6582035 Residential
26992 County Road 12
Sebeka MN 56477



website: www.AffinityRealEstate.com | email: info@affinityrealestate.com | office: 218-237-3333 | fax:218-237-3377

Affinity
REAL ESTATE INC

\$250,000
MLS 6582035 Residential
26992 County Road 12
Sebeka MN 56477



website: www.AffinityRealEstate.com | email: info@affinityrealestate.com | office: 218-237-3333 | fax:218-237-3377

Affinity
REAL ESTATE INC

\$250,000
MLS 6582035 Residential
26992 County Road 12
Sebeka MN 56477



website: www.AffinityRealEstate.com | email: info@affinityrealestate.com | office: 218-237-3333 | fax:218-237-3377

Affinity
REAL ESTATE INC

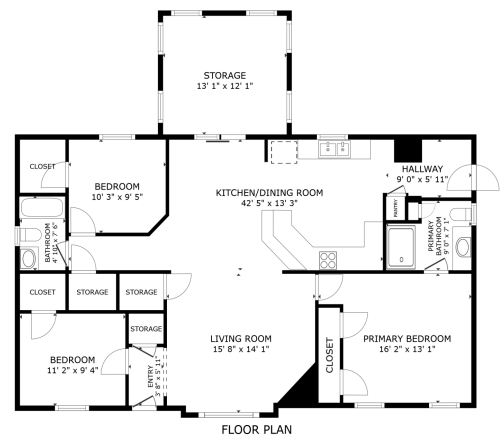
\$250,000
MLS 6582035 Residential
26992 County Road 12
Sebeka MN 56477



website: www.AffinityRealEstate.com | email: info@affinityrealestate.com | office: 218-237-3333 | fax:218-237-3377

Affinity
REAL ESTATE INC

\$250,000
MLS 6582035 Residential
26992 County Road 12
Sebeka MN 56477



GROSS INTERNAL AREA
 FLOOR PLAN 1,447 sq.ft.
 TOTAL 1,647 sq.ft.
NOTES AND DIMENSIONS ARE APPROXIMATE, ACTUAL MAY VARY.



website: www.AffinityRealEstate.com | email: info@affinityrealestate.com | office: 218-237-3333 | fax:218-237-3377



\$250,000
 MLS 6582035 Residential
 26992 County Road 12
 Sebeka MN 56477