



MLS 6582512 Residential

**\$595,000**

3,085 sq ft  
4 bedrooms  
3 baths

4421 Birchmont Drive  
Bemidji MN 56601

Status: Active

**Description:**

A rare find with this classic mid-century modern home designed by renowned Minneapolis architect John N. Polivka. Located on a beautiful 3.45 acre Birchmont Drive lot with a nice view of Lake Bemidji and 25' of Lake Bemidji frontage. Home features over 2000 sq ft on the main floor with a finished lower walkout level of over 1000 sq ft. The lower level would make a great separate unit for an in-law suite or home office use. Driveway access from both Bemidji Avenue and Birchmont Drive. This home has had recent interior updates: refinished hardwood floors, new carpet, fresh paint, new countertops, updated bathrooms, new lower level ceiling & light fixtures, refinished cabinetry and more! The Lake Bemidji frontage is across Birchmont Drive from the home and currently undeveloped but would give great access to one of northern Minnesota's premier lakes. The property also includes two additional buildings for storage: 14x24 single garage and 20x28 single garage with steel siding. Many possibilities on the exterior in the secluded backyard for enhancements like deck enhancements, patios, gazebos, gardens, water features, etc. Bring your vision and ideas to restore this classic Bemidji home and property.

**Additional Details:**

Year Built	1959
Lot Acres	3.46
Lot Dimensions	325x445
Garage Stalls	3
School District	31
Taxes	\$4,366
Taxes with Assessments	\$4,366
Tax Year	2024

**Additional Features:**

**Basement:** Block **Fuel:** Natural Gas **Garage:** 3 **Heat:** Hot Water **Sewer:** Private Sewer **Water:** City Water/Connected, Well **Air Conditioning:** None

**Driving Directions:**

North on Birchmont Dr NE. #4421 on the left.



Listed By:  
CENTURY 21 Dickinson Realtors

Affinity Real Estate Inc. participates in the Regional Multiple Listing Service of Minnesota, Inc Broker Reciprocity (sm) program, allowing us to display other broker's listings on our website. All properties are subject to prior sale, change or withdrawal.



Call Affinity Real Estate

**218-237-3333**

[info@affinityrealestate.com](mailto:info@affinityrealestate.com)



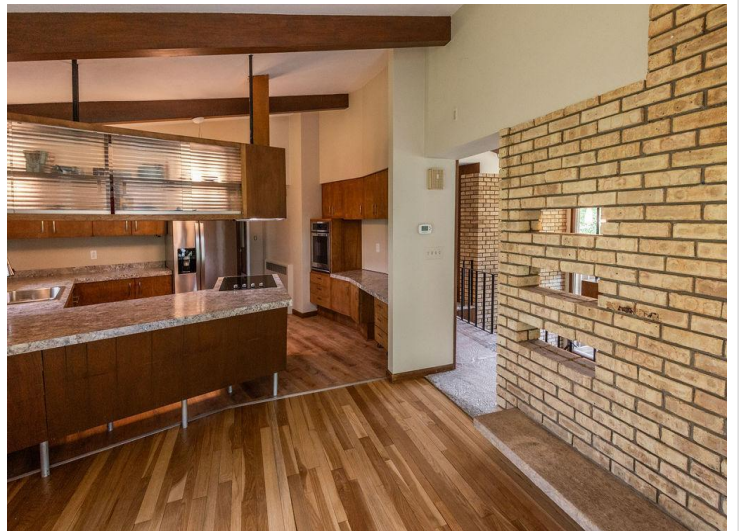
Affinity Real Estate - 600 Park Avenue South - Park Rapids MN 56470



website: [www.AffinityRealEstate.com](http://www.AffinityRealEstate.com) | email: [info@affinityrealestate.com](mailto:info@affinityrealestate.com) | office: 218-237-3333 | fax:218-237-3377



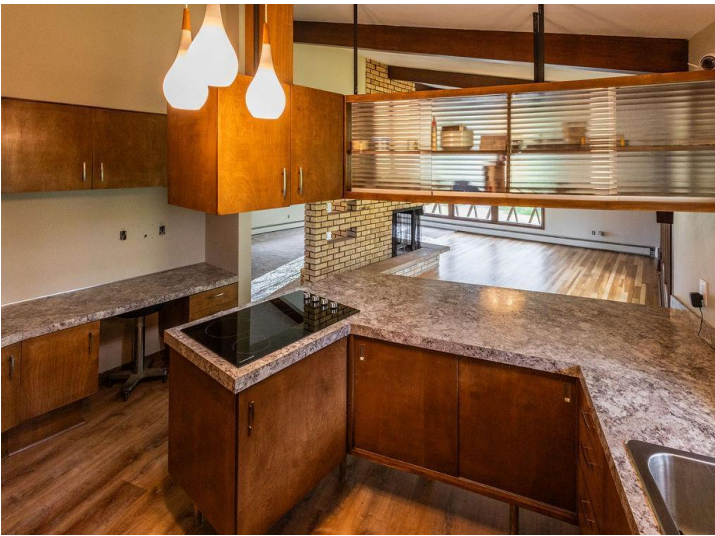
**\$595,000**  
MLS 6582512 Residential  
4421 Birchmont Drive  
Bemidji MN 56601



website: [www.AffinityRealEstate.com](http://www.AffinityRealEstate.com) | email: [info@affinityrealestate.com](mailto:info@affinityrealestate.com) | office: 218-237-3333 | fax:218-237-3377

**Affinity**  
REAL ESTATE INC

**\$595,000**  
MLS 6582512 Residential  
4421 Birchmont Drive  
Bemidji MN 56601



website: [www.AffinityRealEstate.com](http://www.AffinityRealEstate.com) | email: [info@affinityrealestate.com](mailto:info@affinityrealestate.com) | office: 218-237-3333 | fax: 218-237-3377

**Affinity**  
REAL ESTATE INC

**\$595,000**  
MLS 6582512 Residential  
4421 Birchmont Drive  
Bemidji MN 56601



website: [www.AffinityRealEstate.com](http://www.AffinityRealEstate.com) | email: [info@affinityrealestate.com](mailto:info@affinityrealestate.com) | office: 218-237-3333 | fax:218-237-3377



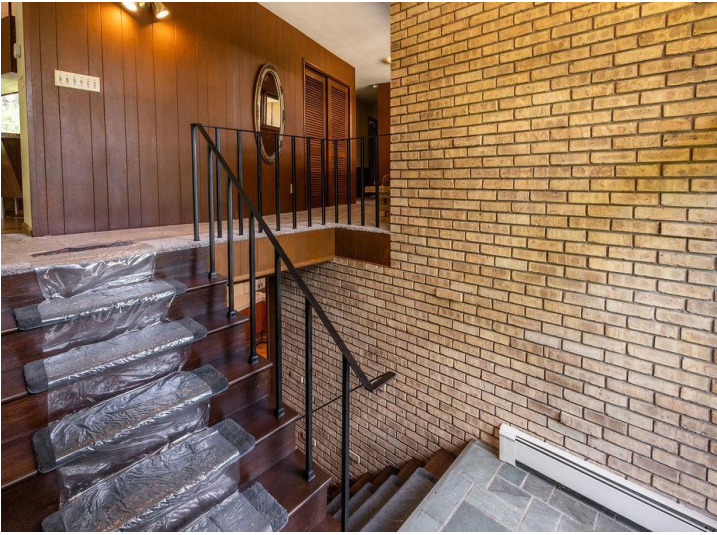
**\$595,000**  
MLS 6582512 Residential  
4421 Birchmont Drive  
Bemidji MN 56601



website: [www.AffinityRealEstate.com](http://www.AffinityRealEstate.com) | email: [info@affinityrealestate.com](mailto:info@affinityrealestate.com) | office: 218-237-3333 | fax:218-237-3377

**Affinity**  
REAL ESTATE INC

**\$595,000**  
MLS 6582512 Residential  
4421 Birchmont Drive  
Bemidji MN 56601



website: [www.AffinityRealEstate.com](http://www.AffinityRealEstate.com) | email: [info@affinityrealestate.com](mailto:info@affinityrealestate.com) | office: 218-237-3333 | fax: 218-237-3377

**Affinity**  
REAL ESTATE INC

**\$595,000**  
MLS 6582512 Residential  
4421 Birchmont Drive  
Bemidji MN 56601

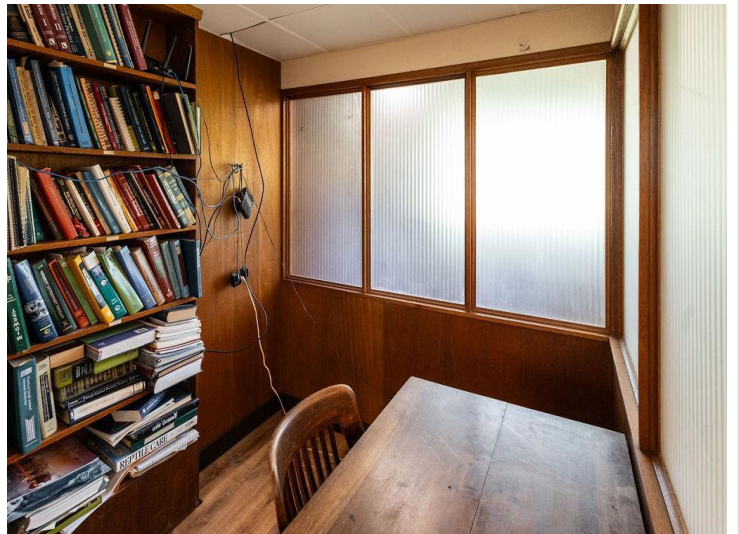


website: [www.AffinityRealEstate.com](http://www.AffinityRealEstate.com) | email: [info@affinityrealestate.com](mailto:info@affinityrealestate.com) | office: 218-237-3333 | fax:218-237-3377



**\$595,000**  
MLS 6582512 Residential  
4421 Birchmont Drive  
Bemidji MN 56601

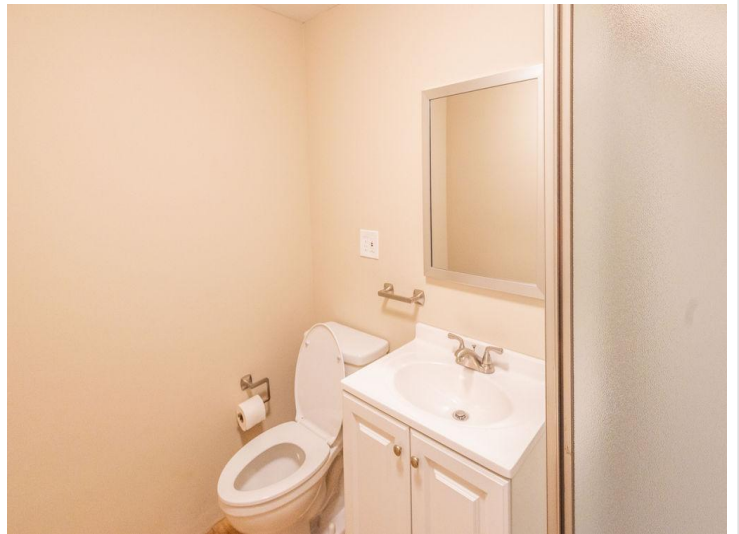
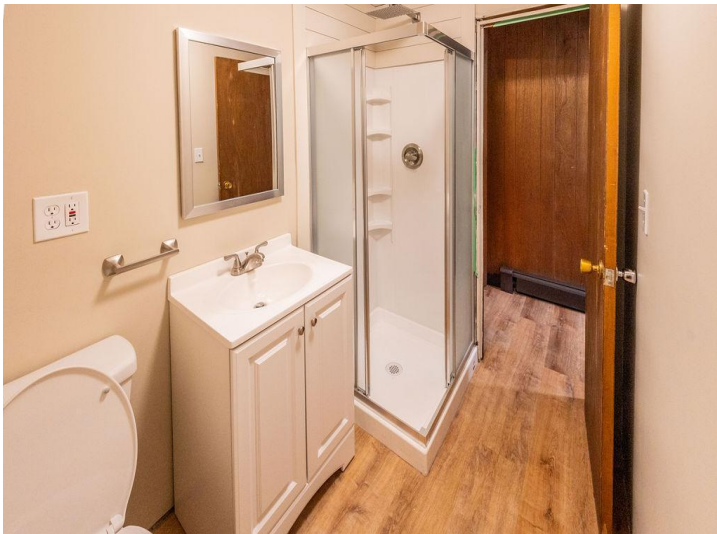




website: [www.AffinityRealEstate.com](http://www.AffinityRealEstate.com) | email: [info@affinityrealestate.com](mailto:info@affinityrealestate.com) | office: 218-237-3333 | fax:218-237-3377



**\$595,000**  
MLS 6582512 Residential  
4421 Birchmont Drive  
Bemidji MN 56601



website: [www.AffinityRealEstate.com](http://www.AffinityRealEstate.com) | email: [info@affinityrealestate.com](mailto:info@affinityrealestate.com) | office: 218-237-3333 | fax:218-237-3377



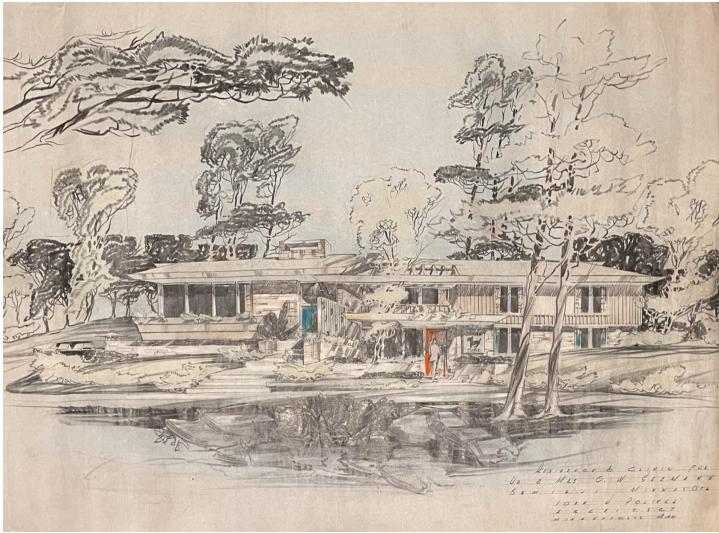
**\$595,000**  
MLS 6582512 Residential  
4421 Birchmont Drive  
Bemidji MN 56601



website: [www.AffinityRealEstate.com](http://www.AffinityRealEstate.com) | email: [info@affinityrealestate.com](mailto:info@affinityrealestate.com) | office: 218-237-3333 | fax: 218-237-3377

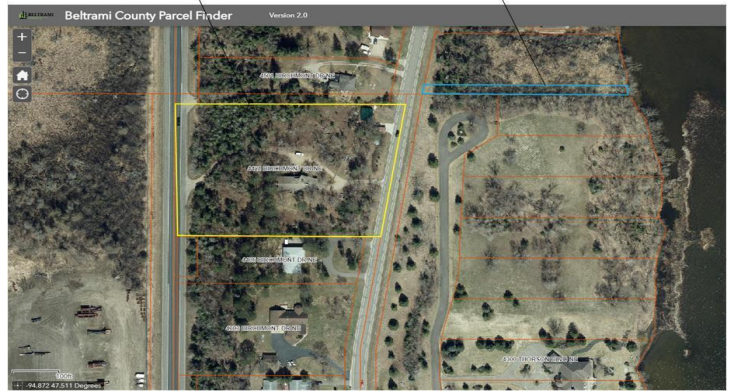
**Affinity**  
REAL ESTATE INC

**\$595,000**  
MLS 6582512 Residential  
4421 Birchmont Drive  
Bemidji MN 56601



4421 Birchmont Dr NE  
3.46 acres  
Accessible from...  
Birchmont Dr NE, or  
Old Highway 71

25' x 440' strip to lake  
Accessible from...  
Birchmont Dr NE, or  
Thorson Blvd NE



website: [www.AffinityRealEstate.com](http://www.AffinityRealEstate.com) | email: [info@affinityrealestate.com](mailto:info@affinityrealestate.com) | office: 218-237-3333 | fax: 218-237-3377



**\$595,000**  
MLS 6582512 Residential  
4421 Birchmont Drive  
Bemidji MN 56601



website: [www.AffinityRealEstate.com](http://www.AffinityRealEstate.com) | email: [info@affinityrealestate.com](mailto:info@affinityrealestate.com) | office: 218-237-3333 | fax:218-237-3377



**\$595,000**  
MLS 6582512 Residential  
4421 Birchmont Drive  
Bemidji MN 56601