



MLS 6583890 Land

**\$79,900**

39.96 Acres  
Raw Land

xxx State 64  
Pine River MN 56479

Status: Active

**Description:**

Embrace the outdoors on this 39-acre hunting haven just 15-20 miles from Pequot Lakes and Pine River. With abundant hunting opportunities, a meandering creek, electricity at the road, and accessible public roads, this diverse property offers a perfect blend of nature and convenience for your dream retreat. Located in the heart of Deer Country. Close to Spider Lake and the Foothills State Forest.

**Additional Details:**

Lot Acres	39.96
Lot Dimensions	1301x1331x1301x1331
School District	2174
Taxes	\$166
Taxes with Assessments	\$166
Tax Year	2024

**Additional Features:**

**Driving Directions:**

From intersection of Highway 371 and County Road 2 in Pine River, take County Road 2 West 14 miles to Highway 64. South on Highway 64 3.5 miles to property on left (East side). This property is about 12 miles North of Leader.



Listed By:  
eXp Realty

Affinity Real Estate Inc. participates in the Regional Multiple Listing Service of Minnesota, Inc Broker Reciprocity (sm) program, allowing us to display other broker's listings on our website. All properties are subject to prior sale, change or withdrawal.



Call Affinity Real Estate

**218-237-3333**

[info@affinityrealestate.com](mailto:info@affinityrealestate.com)



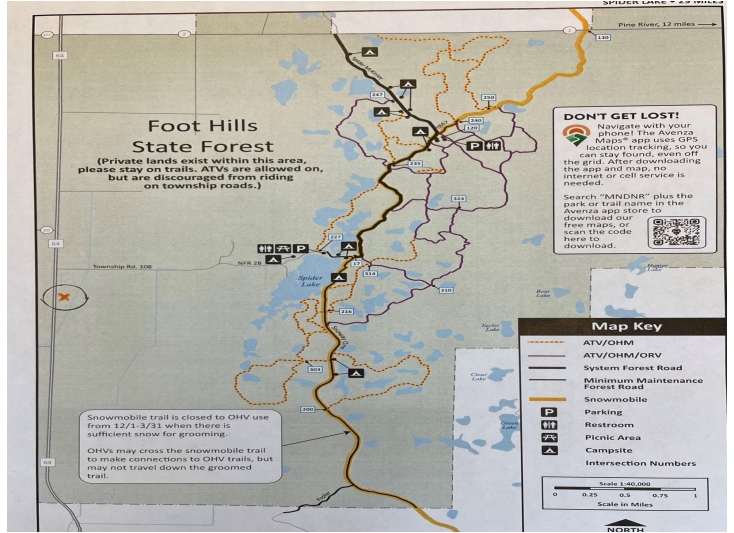
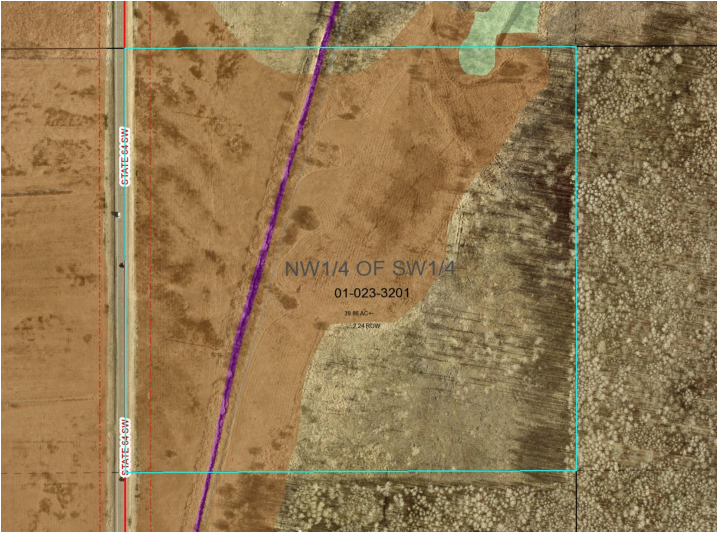
Affinity Real Estate - 600 Park Avenue South - Park Rapids MN 56470



website: [www.AffinityRealEstate.com](http://www.AffinityRealEstate.com) | email: [info@affinityrealestate.com](mailto:info@affinityrealestate.com) | office: 218-237-3333 | fax:218-237-3377



**\$79,900**  
MLS 6583890 Land  
xxx State 64  
Pine River MN 56479



website: [www.AffinityRealEstate.com](http://www.AffinityRealEstate.com) | email: [info@affinityrealestate.com](mailto:info@affinityrealestate.com) | office: 218-237-3333 | fax:218-237-3377



**\$79,900**  
 MLS 6583890 Land  
 xxx State 64  
 Pine River MN 56479