



MLS 6584567 Lake Home

**\$594,000**

2,246 sq ft  
4 bedrooms  
3 baths

4100 Sherman Drive  
Bemidji MN 56601

Waterfront: Mississippi River

Status: Active

**Description:**

Over 3 acres situated on the Mississippi River. The stairs to the water have been redone and are 4 inches apart. There is over 2000 square feet included with this home. 4 bedrooms and 3 bathrooms. Close to Bemidji and located on the Mississippi River that also gives you access to Lake Bemidji. Gorgeous views and a wrap around deck. Underground sprinkler system. 2 stall garage. Additional storage garage. New Kinetico water system. Many extra storage cabinets. Open kitchen and dining room. Fire pit area. Well maintained yard. The dock is waiting for you to enjoy the view. The first Detached Garage is 23 Deep x 30 Wide and is insulated, heated, water connected, and floor drains are installed. This garage has 2 Garage Doors, a walk-in access door, and two windows. The second Detached Garage is 20 Deep x 22 Wide and has 2 overhead doors, currently used as total storage. This setting provides a spectacular 360 view. The brand new driveway is in also.

**Additional Details:**

Year Built	1965
Lot Acres	3.67
Lot Dimensions	320x410x335x540
Garage Stalls	2
School District	31
Taxes	\$5,861
Taxes with Assessments	\$5,861
Tax Year	2023

**Additional Features:**

**Fuel:** Electric, Natural Gas **Heat:** Baseboard, Forced Air, Fireplace(s)

**Driving Directions:**

AT the corner of Keith's Pizza, Turn left onto 1st St SE/Great River Road. Turn Left on Lake Ave NE. Continue straight on Lake Ave NE. Turn right onto Sherman Drive NE. the house will be on your right side.



Listed By:  
Edina Realty, Inc.

Affinity Real Estate Inc. participates in the Regional Multiple Listing Service of Minnesota, Inc Broker Reciprocity (sm) program, allowing us to display other broker's listings on our website. All properties are subject to prior sale, change or withdrawal.



**Call Affinity Real Estate**

**218-237-3333**

**info@affinityrealestate.com**



**Affinity Real Estate - 600 Park Avenue South - Park Rapids MN 56470**





website: [www.AffinityRealEstate.com](http://www.AffinityRealEstate.com) | email: [info@affinityrealestate.com](mailto:info@affinityrealestate.com) | office: 218-237-3333 | fax:218-237-3377



**\$594,000**  
MLS 6584567 Lake Home  
4100 Sherman Drive  
Bemidji MN 56601





website: [www.AffinityRealEstate.com](http://www.AffinityRealEstate.com) | email: [info@affinityrealestate.com](mailto:info@affinityrealestate.com) | office: 218-237-3333 | fax:218-237-3377

**Affinity**  
REAL ESTATE INC

**\$594,000**  
MLS 6584567 Lake Home  
4100 Sherman Drive  
Bemidji MN 56601





website: [www.AffinityRealEstate.com](http://www.AffinityRealEstate.com) | email: [info@affinityrealestate.com](mailto:info@affinityrealestate.com) | office: 218-237-3333 | fax: 218-237-3377

**Affinity**  
REAL ESTATE INC

**\$594,000**  
MLS 6584567 Lake Home  
4100 Sherman Drive  
Bemidji MN 56601





website: [www.AffinityRealEstate.com](http://www.AffinityRealEstate.com) | email: [info@affinityrealestate.com](mailto:info@affinityrealestate.com) | office: 218-237-3333 | fax:218-237-3377



**\$594,000**  
MLS 6584567 Lake Home  
4100 Sherman Drive  
Bemidji MN 56601





website: [www.AffinityRealEstate.com](http://www.AffinityRealEstate.com) | email: [info@affinityrealestate.com](mailto:info@affinityrealestate.com) | office: 218-237-3333 | fax:218-237-3377



**\$594,000**  
MLS 6584567 Lake Home  
4100 Sherman Drive  
Bemidji MN 56601





website: [www.AffinityRealEstate.com](http://www.AffinityRealEstate.com) | email: [info@affinityrealestate.com](mailto:info@affinityrealestate.com) | office: 218-237-3333 | fax: 218-237-3377

**Affinity**  
REAL ESTATE INC

**\$594,000**  
MLS 6584567 Lake Home  
4100 Sherman Drive  
Bemidji MN 56601





website: [www.AffinityRealEstate.com](http://www.AffinityRealEstate.com) | email: [info@affinityrealestate.com](mailto:info@affinityrealestate.com) | office: 218-237-3333 | fax:218-237-3377



**\$594,000**  
MLS 6584567 Lake Home  
4100 Sherman Drive  
Bemidji MN 56601



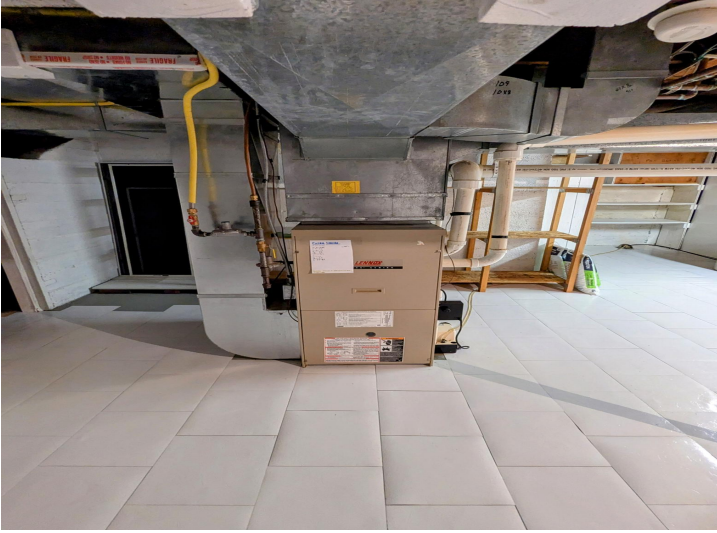


website: [www.AffinityRealEstate.com](http://www.AffinityRealEstate.com) | email: [info@affinityrealestate.com](mailto:info@affinityrealestate.com) | office: 218-237-3333 | fax:218-237-3377

**Affinity**  
REAL ESTATE INC

**\$594,000**  
MLS 6584567 Lake Home  
4100 Sherman Drive  
Bemidji MN 56601





website: [www.AffinityRealEstate.com](http://www.AffinityRealEstate.com) | email: [info@affinityrealestate.com](mailto:info@affinityrealestate.com) | office: 218-237-3333 | fax:218-237-3377

**Affinity**  
REAL ESTATE INC

**\$594,000**  
MLS 6584567 Lake Home  
4100 Sherman Drive  
Bemidji MN 56601





website: [www.AffinityRealEstate.com](http://www.AffinityRealEstate.com) | email: [info@affinityrealestate.com](mailto:info@affinityrealestate.com) | office: 218-237-3333 | fax:218-237-3377



**\$594,000**  
MLS 6584567 Lake Home  
4100 Sherman Drive  
Bemidji MN 56601



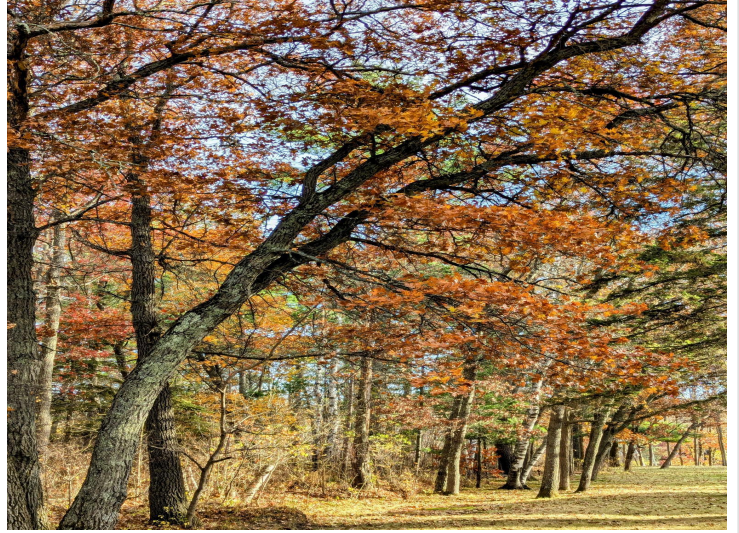


website: [www.AffinityRealEstate.com](http://www.AffinityRealEstate.com) | email: [info@affinityrealestate.com](mailto:info@affinityrealestate.com) | office: 218-237-3333 | fax:218-237-3377



**\$594,000**  
MLS 6584567 Lake Home  
4100 Sherman Drive  
Bemidji MN 56601





website: [www.AffinityRealEstate.com](http://www.AffinityRealEstate.com) | email: [info@affinityrealestate.com](mailto:info@affinityrealestate.com) | office: 218-237-3333 | fax:218-237-3377



**\$594,000**  
MLS 6584567 Lake Home  
4100 Sherman Drive  
Bemidji MN 56601