



MLS 6585057 Lake Home

\$549,000

4,604 sq ft
5 bedrooms
5 baths

1579 Rivercrest Lane
Bemidji MN 56601

Waterfront: Mississippi River

Status: Active

Description:

Fabulous 5 bd, 5 ba home on the Mississippi River. You will fall in love with this spacious home as it has everything thing you need from your private office to the large outside entertaining patio. You can live on the main level with 3 bedrooms, office, living room, formal dining room, informal dining area, 4 season porch, sun porch, plus laundry area. In the main floor entertaining area, you will find a wine bar & a Wilkening wood burning fireplace, a perfect place to unwind at the end of the day. The lower level has 2 bedrooms, one includes a 1/2 bath, large family room, bar area with sink and mini fridge, full bath, storage rooms, utility room with a wood storage room w/wood shoot for easy access. As you step outside the walk out you will be greeted with a variety of beautiful flowers (including Zinnia blooming throughout the season) along the patio which leads to the Mississippi River. Enjoy a paddle on the river or sit and read a book in the back yard private oasis. There is a fenced area for your pets to run free & even a clothesline. Homeowners have made many updates including light fixtures 2024, installed new carpeting in 3 main floor rooms 2024, newer roof 2020, new septic 2021, seal coated driveway 2024, newer washer & dryer 2022 and the ductwork has been cleaned. The oak wood flooring by expert John McDonald. Heated floor was added to 4 season sunroom. Furnace and AC has been cleaned and serviced. It will be obvious when you tour the home that it has been loved and well maintained. The location is exceptional, minutes from downtown, shopping and schools. Call for your private tour and fall in love with this amazing home!

Additional Details:

Year Built	1980
Lot Acres	1.8
Lot Dimensions	150x301x241x109x317
Garage Stalls	2
School District	31
Taxes	\$3,876
Taxes with Assessments	\$3,876
Tax Year	2024

Additional Features:

Fuel: Electric **Heat:** Dual, Forced Air, Fireplace(s), Radiant Floor, Wood Stove

Driving Directions:

From Bemidji, MN take 5th St W to Jefferson Ave SW. South on Jefferson Ave SW will be on your right.

Affinity Real Estate Inc. participates in the Regional Multiple Listing Service of Minnesota, Inc Broker Reciprocity (sm) program, allowing us to display other broker's listings on our website. All properties are subject to prior sale, change or withdrawal.



Call Affinity Real Estate

218-237-3333

info@affinityrealestate.com



Affinity Real Estate - 600 Park Avenue South - Park Rapids MN 56470



website: www.AffinityRealEstate.com | email: info@affinityrealestate.com | office: 218-237-3333 | fax: 218-237-3377

Affinity
REAL ESTATE INC

\$549,000
MLS 6585057 Lake Home
1579 Rivercrest Lane
Bemidji MN 56601



website: www.AffinityRealEstate.com | email: info@affinityrealestate.com | office: 218-237-3333 | fax: 218-237-3377

Affinity
REAL ESTATE INC

\$549,000
MLS 6585057 Lake Home
1579 Rivercrest Lane
Bemidji MN 56601



website: www.AffinityRealEstate.com | email: info@affinityrealestate.com | office: 218-237-3333 | fax:218-237-3377

Affinity
REAL ESTATE INC

\$549,000
MLS 6585057 Lake Home
1579 Rivercrest Lane
Bemidji MN 56601



website: www.AffinityRealEstate.com | email: info@affinityrealestate.com | office: 218-237-3333 | fax:218-237-3377

Affinity
REAL ESTATE INC

\$549,000
MLS 6585057 Lake Home
1579 Rivercrest Lane
Bemidji MN 56601



website: www.AffinityRealEstate.com | email: info@affinityrealestate.com | office: 218-237-3333 | fax: 218-237-3377



\$549,000
MLS 6585057 Lake Home
1579 Rivercrest Lane
Bemidji MN 56601



website: www.AffinityRealEstate.com | email: info@affinityrealestate.com | office: 218-237-3333 | fax: 218-237-3377



\$549,000
MLS 6585057 Lake Home
1579 Rivercrest Lane
Bemidji MN 56601



website: www.AffinityRealEstate.com | email: info@affinityrealestate.com | office: 218-237-3333 | fax: 218-237-3377

Affinity
REAL ESTATE INC

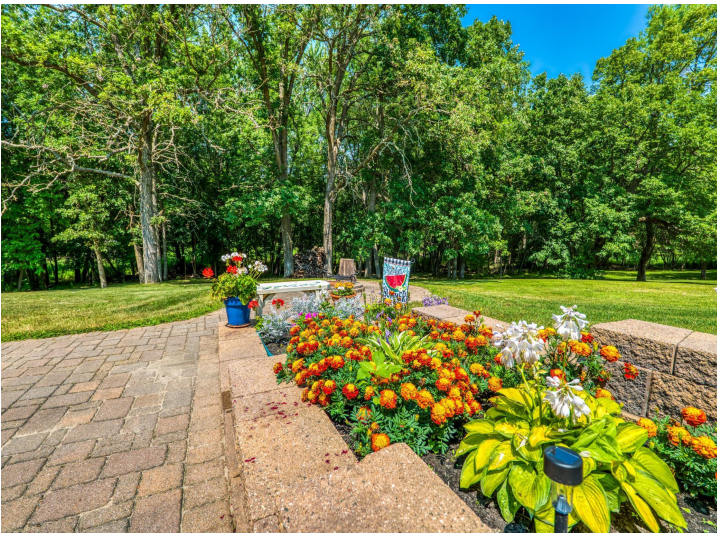
\$549,000
MLS 6585057 Lake Home
1579 Rivercrest Lane
Bemidji MN 56601



website: www.AffinityRealEstate.com | email: info@affinityrealestate.com | office: 218-237-3333 | fax:218-237-3377



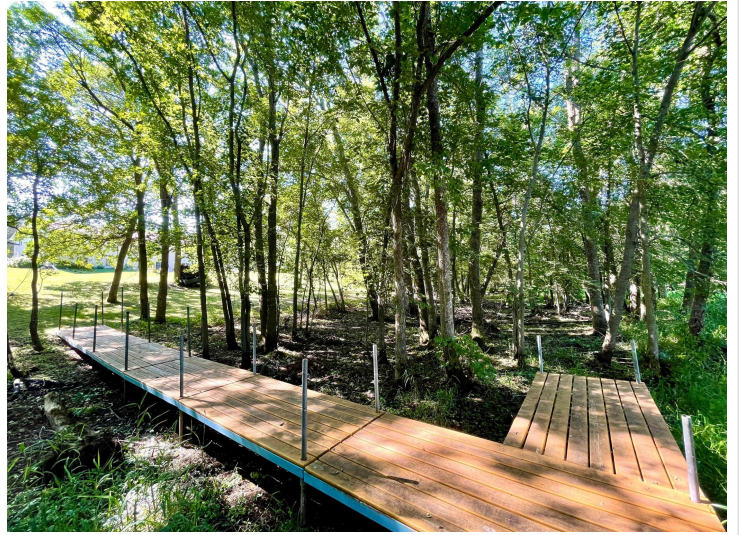
\$549,000
MLS 6585057 Lake Home
1579 Rivercrest Lane
Bemidji MN 56601



website: www.AffinityRealEstate.com | email: info@affinityrealestate.com | office: 218-237-3333 | fax:218-237-3377

Affinity
REAL ESTATE INC

\$549,000
MLS 6585057 Lake Home
1579 Rivercrest Lane
Bemidji MN 56601



website: www.AffinityRealEstate.com | email: info@affinityrealestate.com | office: 218-237-3333 | fax: 218-237-3377

Affinity
REAL ESTATE INC

\$549,000
MLS 6585057 Lake Home
1579 Rivercrest Lane
Bemidji MN 56601



website: www.AffinityRealEstate.com | email: info@affinityrealestate.com | office: 218-237-3333 | fax:218-237-3377



\$549,000
MLS 6585057 Lake Home
1579 Rivercrest Lane
Bemidji MN 56601



website: www.AffinityRealEstate.com | email: info@affinityrealestate.com | office: 218-237-3333 | fax: 218-237-3377

Affinity
REAL ESTATE INC

\$549,000
MLS 6585057 Lake Home
1579 Rivercrest Lane
Bemidji MN 56601



website: www.AffinityRealEstate.com | email: info@affinityrealestate.com | office: 218-237-3333 | fax:218-237-3377



\$549,000
MLS 6585057 Lake Home
1579 Rivercrest Lane
Bemidji MN 56601



website: www.AffinityRealEstate.com | email: info@affinityrealestate.com | office: 218-237-3333 | fax:218-237-3377

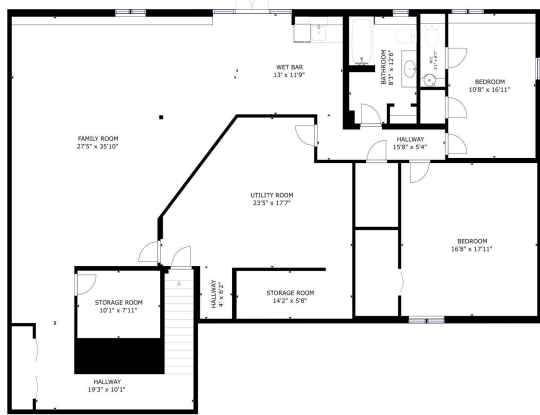
Affinity
REAL ESTATE INC

\$549,000
MLS 6585057 Lake Home
1579 Rivercrest Lane
Bemidji MN 56601



FLOOR 1
FLOOR 2

GREEN INTERNAL AREA
FLOOR 1: 2735 sq. ft. (INCLUDES 2775 sq. ft. IN B) EXCLUDED GARAGE, GARAGE: 412 sq. ft.
TOTAL: 3147 sq. ft.
SIZES AND DIMENSIONS ARE APPROXIMATE, ACTUAL MAY VARY.



FLOOR 1

GREEN INTERNAL AREA
FLOOR 1: 2735 sq. ft. (INCLUDES 2775 sq. ft. IN B) EXCLUDED GARAGE, GARAGE: 412 sq. ft.
TOTAL: 3147 sq. ft.
SIZES AND DIMENSIONS ARE APPROXIMATE, ACTUAL MAY VARY.



FLOOR 2

GREEN INTERNAL AREA
FLOOR 2: 2735 sq. ft. (INCLUDES 2775 sq. ft. IN B) EXCLUDED GARAGE, GARAGE: 412 sq. ft.
TOTAL: 3147 sq. ft.
SIZES AND DIMENSIONS ARE APPROXIMATE, ACTUAL MAY VARY.



website: www.AffinityRealEstate.com | email: info@affinityrealestate.com | office: 218-237-3333 | fax: 218-237-3377



\$549,000
 MLS 6585057 Lake Home
 1579 Rivercrest Lane
 Bemidji MN 56601