



MLS 6585507 Land

**\$42,900**

0.99 Acres  
Plat Designed

Lot 1 Patriot Ave  
Pequot Lakes MN 56472

Status: Active

**Description:**

Patriot Pines Lot 2 offers a rare blend of convenience and natural beauty, ideal for creating the home you've always envisioned. With its nearly one-acre size, this lot provides ample space for your custom build, all while being close to essential amenities and highly rated schools. The preliminary plat approval ensures a streamlined process, bringing you one step closer to making this exceptional property your own. Seize this chance to embrace a tranquil lifestyle in a coveted location. Don't miss out on this prime opportunity.

**Additional Details:**

Lot Acres	0.99
Lot Dimensions	362x
School District	186
Taxes	\$305
Taxes with Assessments	\$305
Tax Year	2024

**Additional Features:**

**Driving Directions:**

From 371 head north on patriot avenue and the property will be on your left.



Listed By:  
RE/MAX Results

Affinity Real Estate Inc. participates in the Regional Multiple Listing Service of Minnesota, Inc Broker Reciprocity (sm) program, allowing us to display other broker's listings on our website. All properties are subject to prior sale, change or withdrawal.



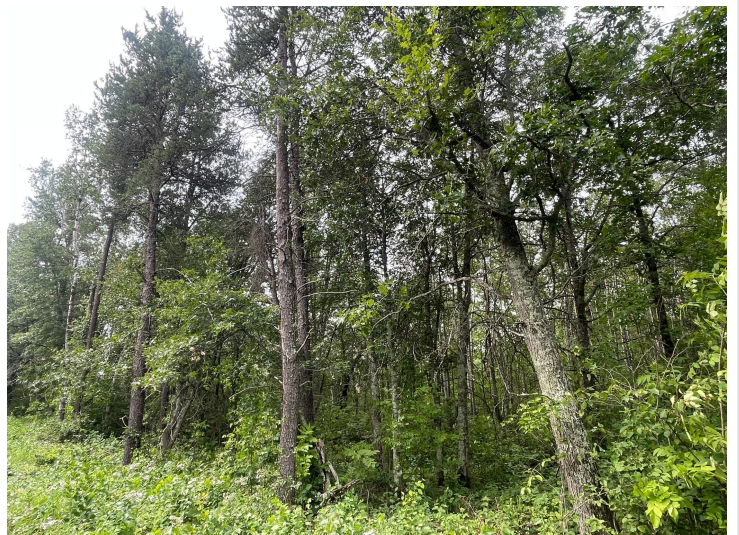
**Call Affinity Real Estate**

**218-237-3333**

**info@affinityrealestate.com**



**Affinity Real Estate - 600 Park Avenue South - Park Rapids MN 56470**



website: [www.AffinityRealEstate.com](http://www.AffinityRealEstate.com) | email: [info@affinityrealestate.com](mailto:info@affinityrealestate.com) | office: 218-237-3333 | fax:218-237-3377



**\$42,900**  
MLS 6585507 Land  
Lot 1 Patriot Ave  
Pequot Lakes MN 56472



website: [www.AffinityRealEstate.com](http://www.AffinityRealEstate.com) | email: [info@affinityrealestate.com](mailto:info@affinityrealestate.com) | office: 218-237-3333 | fax:218-237-3377



**\$42,900**  
MLS 6585507 Land  
Lot 1 Patriot Ave  
Pequot Lakes MN 56472



website: [www.AffinityRealEstate.com](http://www.AffinityRealEstate.com) | email: [info@affinityrealestate.com](mailto:info@affinityrealestate.com) | office: 218-237-3333 | fax:218-237-3377



**\$42,900**  
MLS 6585507 Land  
Lot 1 Patriot Ave  
Pequot Lakes MN 56472



website: [www.AffinityRealEstate.com](http://www.AffinityRealEstate.com) | email: [info@affinityrealestate.com](mailto:info@affinityrealestate.com) | office: 218-237-3333 | fax:218-237-3377



**\$42,900**  
MLS 6585507 Land  
Lot 1 Patriot Ave  
Pequot Lakes MN 56472



website: [www.AffinityRealEstate.com](http://www.AffinityRealEstate.com) | email: [info@affinityrealestate.com](mailto:info@affinityrealestate.com) | office: 218-237-3333 | fax:218-237-3377

**Affinity**  
REAL ESTATE INC

**\$42,900**  
MLS 6585507 Land  
Lot 1 Patriot Ave  
Pequot Lakes MN 56472



website: [www.AffinityRealEstate.com](http://www.AffinityRealEstate.com) | email: [info@affinityrealestate.com](mailto:info@affinityrealestate.com) | office: 218-237-3333 | fax:218-237-3377



**\$42,900**  
MLS 6585507 Land  
Lot 1 Patriot Ave  
Pequot Lakes MN 56472



website: [www.AffinityRealEstate.com](http://www.AffinityRealEstate.com) | email: [info@affinityrealestate.com](mailto:info@affinityrealestate.com) | office: 218-237-3333 | fax:218-237-3377



**\$42,900**  
MLS 6585507 Land  
Lot 1 Patriot Ave  
Pequot Lakes MN 56472