



MLS 6585533 Land

\$44,900

0.99 Acres
Plat Designed

Lot 2 Patriot Ave
Pequot Lakes MN 56472

Status: Active

Description:

Patriot Pines Lot 2 offers a rare blend of convenience and natural beauty, ideal for creating the home you've always envisioned. With its nearly one-acre size, this lot provides ample space for your custom build, all while being close to essential amenities and highly rated schools. The preliminary plat approval ensures a streamlined process, bringing you one step closer to making this exceptional property your own. Seize this chance to embrace a tranquil lifestyle in a coveted location. Don't miss out on this prime opportunity.

Additional Details:

Lot Acres	0.99
Lot Dimensions	362x120
School District	186
Taxes	\$300
Taxes with Assessments	\$300
Tax Year	2024

Additional Features:

Driving Directions:

From 371 north, turn left onto patriot ave, then the property will be on your left.



Listed By:
RE/MAX Results

Affinity Real Estate Inc. participates in the Regional Multiple Listing Service of Minnesota, Inc Broker Reciprocity (sm) program, allowing us to display other broker's listings on our website. All properties are subject to prior sale, change or withdrawal.



Call Affinity Real Estate

218-237-3333

info@affinityrealestate.com



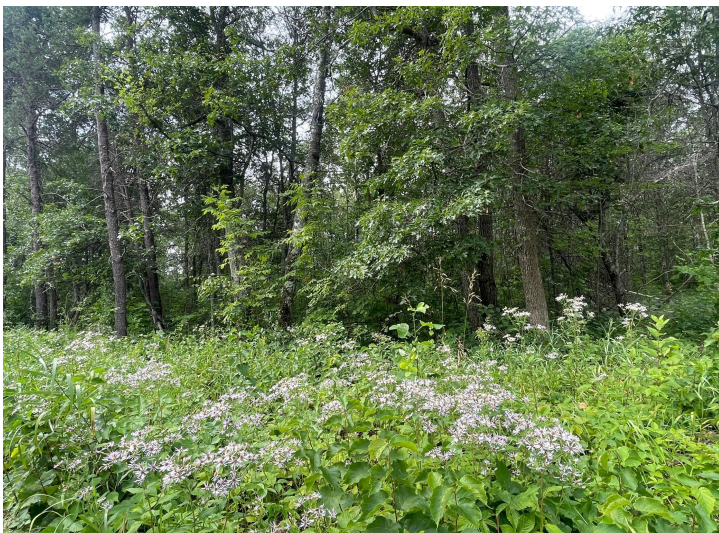
Affinity Real Estate - 600 Park Avenue South - Park Rapids MN 56470



website: www.AffinityRealEstate.com | email: info@affinityrealestate.com | office: 218-237-3333 | fax:218-237-3377



\$44,900
MLS 6585533 Land
Lot 2 Patriot Ave
Pequot Lakes MN 56472



website: www.AffinityRealEstate.com | email: info@affinityrealestate.com | office: 218-237-3333 | fax:218-237-3377



\$44,900
MLS 6585533 Land
Lot 2 Patriot Ave
Pequot Lakes MN 56472



website: www.AffinityRealEstate.com | email: info@affinityrealestate.com | office: 218-237-3333 | fax:218-237-3377



\$44,900
MLS 6585533 Land
Lot 2 Patriot Ave
Pequot Lakes MN 56472



website: www.AffinityRealEstate.com | email: info@affinityrealestate.com | office: 218-237-3333 | fax:218-237-3377

Affinity
REAL ESTATE INC

\$44,900
MLS 6585533 Land
Lot 2 Patriot Ave
Pequot Lakes MN 56472



website: www.AffinityRealEstate.com | email: info@affinityrealestate.com | office: 218-237-3333 | fax:218-237-3377

Affinity
REAL ESTATE INC

\$44,900
MLS 6585533 Land
Lot 2 Patriot Ave
Pequot Lakes MN 56472



website: www.AffinityRealEstate.com | email: info@affinityrealestate.com | office: 218-237-3333 | fax:218-237-3377



\$44,900
MLS 6585533 Land
Lot 2 Patriot Ave
Pequot Lakes MN 56472



website: www.AffinityRealEstate.com | email: info@affinityrealestate.com | office: 218-237-3333 | fax:218-237-3377



\$44,900
MLS 6585533 Land
Lot 2 Patriot Ave
Pequot Lakes MN 56472