



MLS 6585660 Lake Home

\$974,900

3,765 sq ft
3 bedrooms
4 baths

46174 County Highway 35
Vergas MN 56587

Waterfront: Sybil

Status: Active

Description:

One of a kind, completely custom log home on Sybil Lake near Vergas. Walnut cabinetry and granite countertops surround this beautiful kitchen with gas range, wall oven, stainless vent hood, lots of prep and storage space! The main living area features bamboo floors, woodburning fireplace and the stunning massive logs draw your eyes up to the two story vaulted ceiling. The spacious deck off the living room has plenty of room to entertain or have designated areas for dining and lounging. Upper level loft is just being finished with a new metal railing, carpet and half bath. Also includes a large storage area. Primary suite features a private deck overlooking the lake, a double vanity, tub, tile walk in shower and walk in closet. The elevator takes you to the newly finished basement where you'll find 2 bedrooms, bathroom with modern tile shower and family room with walk out towards the lake. Asphalt drive, 3 car garage AND 4.54 acres of land!

Additional Details:

Year Built	2016
Lot Acres	4.54
Lot Dimensions	irr
Garage Stalls	3
School District	549
Taxes	\$2,840
Taxes with Assessments	\$2,840
Tax Year	2024

Additional Features:

Basement: Finished **Fuel:** Propane **Garage:** 3 **Heat:** Forced Air, Fireplace(s) **Sewer:** Private Sewer **Water:** Well **Air Conditioning:** Central Air

Driving Directions:

From Vergas, Take Hwy 4, South. Turn left onto Co Rd 35/E Looney Ln. Continue to follow Co Rd 35 2.7 mi to address.



Listed By:
Re/Max Lakes Region

Affinity Real Estate Inc. participates in the Regional Multiple Listing Service of Minnesota, Inc Broker Reciprocity (sm) program, allowing us to display other broker's listings on our website. All properties are subject to prior sale, change or withdrawal.



Call Affinity Real Estate

218-237-3333

info@affinityrealestate.com



Affinity Real Estate - 600 Park Avenue South - Park Rapids MN 56470



website: www.AffinityRealEstate.com | email: info@affinityrealestate.com | office: 218-237-3333 | fax: 218-237-3377

Affinity
REAL ESTATE INC

\$974,900
MLS 6585660 Lake Home
46174 County Highway 35
Vergas MN 56587



website: www.AffinityRealEstate.com | email: info@affinityrealestate.com | office: 218-237-3333 | fax:218-237-3377



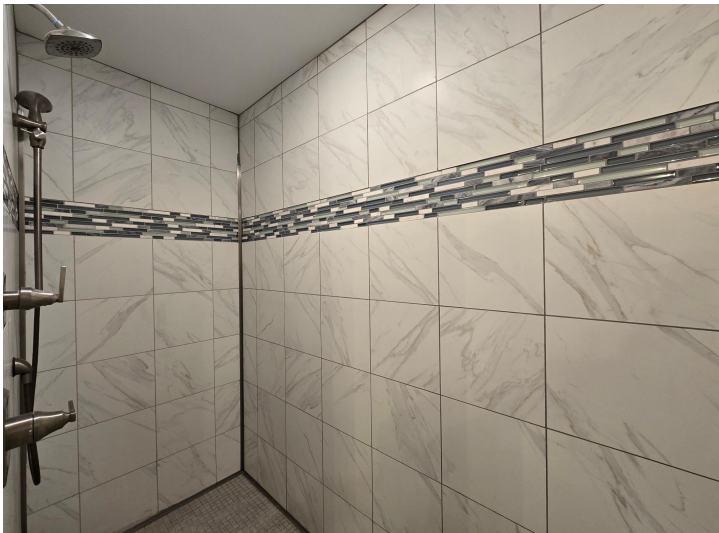
\$974,900
MLS 6585660 Lake Home
46174 County Highway 35
Vergas MN 56587



website: www.AffinityRealEstate.com | email: info@affinityrealestate.com | office: 218-237-3333 | fax: 218-237-3377

Affinity
REAL ESTATE INC

\$974,900
MLS 6585660 Lake Home
46174 County Highway 35
Vergas MN 56587



website: www.AffinityRealEstate.com | email: info@affinityrealestate.com | office: 218-237-3333 | fax: 218-237-3377

Affinity
REAL ESTATE INC

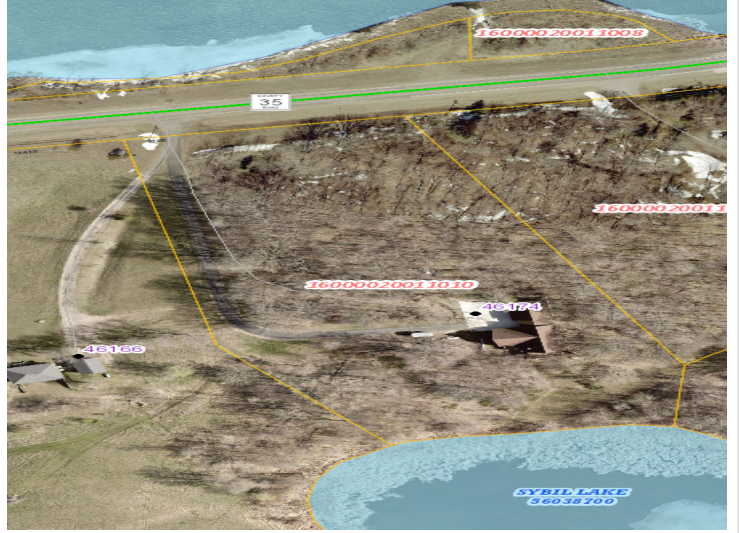
\$974,900
MLS 6585660 Lake Home
46174 County Highway 35
Vergas MN 56587



website: www.AffinityRealEstate.com | email: info@affinityrealestate.com | office: 218-237-3333 | fax: 218-237-3377

Affinity
REAL ESTATE INC

\$974,900
MLS 6585660 Lake Home
46174 County Highway 35
Vergas MN 56587



website: www.AffinityRealEstate.com | email: info@affinityrealestate.com | office: 218-237-3333 | fax:218-237-3377



\$974,900
MLS 6585660 Lake Home
46174 County Highway 35
Vergas MN 56587