



MLS 6585719 Lake Home

**\$375,000**

1,882 sq ft  
3 bedrooms  
2 baths

14070 County 18  
Park Rapids MN 56470

Waterfront: Fish Hook

Status: Active

**Description:**

Great property on Fishhook lake near Park Rapids. Featuring 3 bedrooms, 2 bathrooms, a walkout basement and nearly 2,000 sq ft of living space. Enjoy beautiful views of the lake from the deck and patio, or relax in the screened breezeway between the garage and house. Plenty of room for all your toys or workshop in the oversized garage. With over 1,600 acres of water, Fishhook lake offers great fishing and recreational opportunities and is just minutes from Park Rapids.

**Additional Details:**

Year Built	1965
Lot Acres	0.8
Lot Dimensions	100x396x100x300
Garage Stalls	2
School District	309
Taxes	\$2,032
Taxes with Assessments	\$2,242
Tax Year	2024

**Additional Features:**

**Basement:** Block, Finished **Fuel:** Natural Gas **Garage:** 2 **Heat:** Baseboard, Boiler **Sewer:** Private Sewer, Tank with Drainage Field **Water:** Drilled  
**Air Conditioning:** Window Unit(s)

**Driving Directions:**

From 71/34 in Park Rapids: North on 71 to a right onto County 18, follow to property on Left.



Listed By:  
Wolff & Simon Real Estate

Affinity Real Estate Inc. participates in the Regional Multiple Listing Service of Minnesota, Inc Broker Reciprocity (sm) program, allowing us to display other broker's listings on our website. All properties are subject to prior sale, change or withdrawal.



Call Affinity Real Estate

**218-237-3333**

[info@affinityrealestate.com](mailto:info@affinityrealestate.com)



Affinity Real Estate - 600 Park Avenue South - Park Rapids MN 56470



website: [www.AffinityRealEstate.com](http://www.AffinityRealEstate.com) | email: [info@affinityrealestate.com](mailto:info@affinityrealestate.com) | office: 218-237-3333 | fax:218-237-3377

**Affinity**  
REAL ESTATE INC

**\$375,000**  
MLS 6585719 Lake Home  
14070 County 18  
Park Rapids MN 56470



website: [www.AffinityRealEstate.com](http://www.AffinityRealEstate.com) | email: [info@affinityrealestate.com](mailto:info@affinityrealestate.com) | office: 218-237-3333 | fax: 218-237-3377

**Affinity**  
REAL ESTATE INC

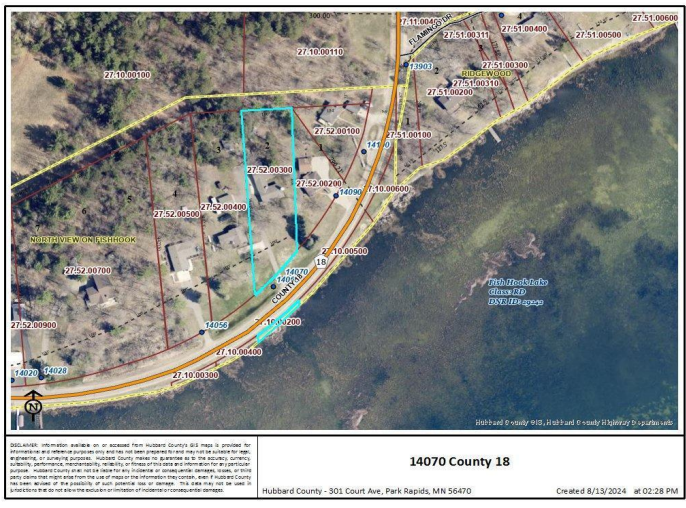
**\$375,000**  
MLS 6585719 Lake Home  
14070 County 18  
Park Rapids MN 56470



website: [www.AffinityRealEstate.com](http://www.AffinityRealEstate.com) | email: [info@affinityrealestate.com](mailto:info@affinityrealestate.com) | office: 218-237-3333 | fax:218-237-3377



**\$375,000**  
MLS 6585719 Lake Home  
14070 County 18  
Park Rapids MN 56470



website: [www.AffinityRealEstate.com](http://www.AffinityRealEstate.com) | email: [info@affinityrealestate.com](mailto:info@affinityrealestate.com) | office: 218-237-3333 | fax: 218-237-3377



**\$375,000**  
 MLS 6585719 Lake Home  
 14070 County 18  
 Park Rapids MN 56470