



MLS 6585832 Lake Home

\$728,492

3,759 sq ft
5 bedrooms
3 baths

Lot 9 Padre Court
Nisswa MN 56468

Waterfront: Fawn Lake (Nisswa City)

Status: Active

Description:

To be built - construction has not started.

This property is located in the Fawn Ridge development with access to 220 acres of Fawn, Edna, and Hidden Lakes!! It features vaulted ceilings, 8 foot interior doors, a gas fireplace with built-ins, granite countertops throughout, a spacious pantry, a large kitchen with a center island and windows above the sink, and stainless steel appliances! The master bedroom is privately situated across the house from the other two bedrooms and includes a private bathroom with a walk-in ceramic shower and walk-in closet! Additional floorplans, developments, and lots available!

Additional Details:

Year Built	2024
Lot Acres	0.47
Lot Dimensions	85x167x165x169
Garage Stalls	4
School District	181
Taxes	\$178
Taxes with Assessments	\$178
Tax Year	2023

Additional Features:

Basement: Drain Tiled, 8 ft+ Pour, Finished, Full, Concrete, Sump Pump, Walkout **Fuel:** Natural Gas **Garage:** 4 **Heat:** Forced Air, Fireplace(s)
Sewer: Shared Septic, Tank with Drainage Field **Water:** Submersible - 4 Inch, Drilled, Private, Well **Air Conditioning:** Central Air

Driving Directions:

Take 371 North, left onto Upper Roy Lake Road, right onto Padre Place, right onto Padre Court, property is on the right



Listed By:
Counselor Realty Brainerd Lakes

Affinity Real Estate Inc. participates in the Regional Multiple Listing Service of Minnesota, Inc Broker Reciprocity (sm) program, allowing us to display other broker's listings on our website. All properties are subject to prior sale, change or withdrawal.



Call Affinity Real Estate

218-237-3333

info@affinityrealestate.com



Affinity Real Estate - 600 Park Avenue South - Park Rapids MN 56470



website: www.AffinityRealEstate.com | email: info@affinityrealestate.com | office: 218-237-3333 | fax: 218-237-3377

Affinity
REAL ESTATE INC

\$728,492
MLS 6585832 Lake Home
Lot 9 Padre Court
Nisswa MN 56468



website: www.AffinityRealEstate.com | email: info@affinityrealestate.com | office: 218-237-3333 | fax:218-237-3377

Affinity
REAL ESTATE INC

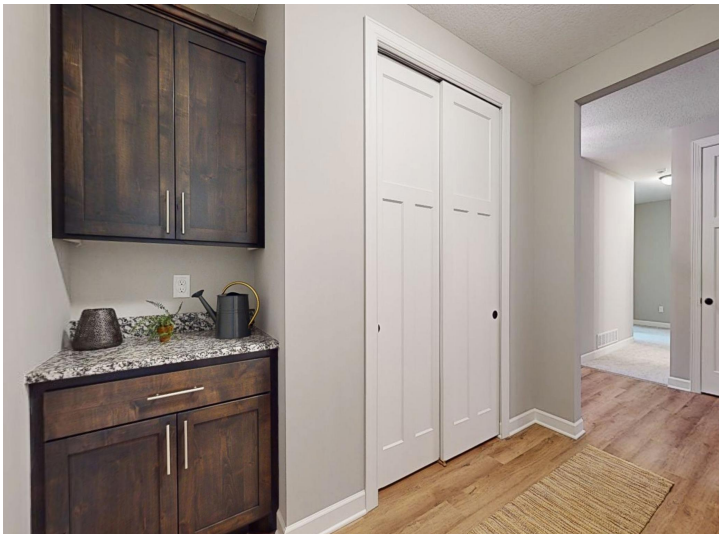
\$728,492
MLS 6585832 Lake Home
Lot 9 Padre Court
Nisswa MN 56468



website: www.AffinityRealEstate.com | email: info@affinityrealestate.com | office: 218-237-3333 | fax:218-237-3377



\$728,492
MLS 6585832 Lake Home
Lot 9 Padre Court
Nisswa MN 56468



website: www.AffinityRealEstate.com | email: info@affinityrealestate.com | office: 218-237-3333 | fax:218-237-3377



\$728,492
MLS 6585832 Lake Home
Lot 9 Padre Court
Nisswa MN 56468



website: www.AffinityRealEstate.com | email: info@affinityrealestate.com | office: 218-237-3333 | fax:218-237-3377



\$728,492
MLS 6585832 Lake Home
Lot 9 Padre Court
Nisswa MN 56468



website: www.AffinityRealEstate.com | email: info@affinityrealestate.com | office: 218-237-3333 | fax:218-237-3377



\$728,492
MLS 6585832 Lake Home
Lot 9 Padre Court
Nisswa MN 56468



website: www.AffinityRealEstate.com | email: info@affinityrealestate.com | office: 218-237-3333 | fax:218-237-3377



\$728,492
MLS 6585832 Lake Home
Lot 9 Padre Court
Nisswa MN 56468



website: www.AffinityRealEstate.com | email: info@affinityrealestate.com | office: 218-237-3333 | fax:218-237-3377



\$728,492
MLS 6585832 Lake Home
Lot 9 Padre Court
Nisswa MN 56468