



MLS 6586172 Commercial Sale

\$1,990,000

Description:

Rare find! Evergreen Bay Resort offers the rare combination of a large number of well maintained cottages, a great sand beach on a great lake, lots of room for expanding the business, plus its located in a thriving resort community.

The seasonal resort has 13 modern cabins and the current owner has invested extensively in new furnishings, docks, equipment, and lake toys. You may know this resort as Fun Ta Boot resort, but you will immediately appreciate all the improvements and maintenance the current owner has made.

The property has fiber optic WIFI and cable TV, but it also has fishing, boat rentals, hiking trails, family activities, a owners home/lodge, and volley ball all nestled in a 80 yr old Norway Pine Forest.

The resort has 66 acres and the high wooded ground makes expansion possible. They have also started expanding into the Adventure Camping business which you can expand and customize to meet your business goals.

The resort is located near Itasca State Park, just north of Park Rapids - great schools and a great community.


Additional Details:

Year Built	1973
Lot Acres	65.84
Lot Dimensions	irregular - approx 1290' x 2194'
Garage Stalls	3
School District	309
Taxes	\$16,258
Taxes with Assessments	\$16,258
Tax Year	2023

Additional Features:

Fuel: Propane **Heat:** Forced Air, Fireplace(s)

Driving Directions:

Listed By:  Lake Country Resort Sales, Inc.

From State on Co Hwy 46 (Bobo Road) and drive 1.3 miles to Fun Ta Boot Road

Service of Minnesota, Inc Broker Reciprocity (sm) program, allowing us to display other broker's listings on our website. All properties are subject to prior sale, change or withdrawal.



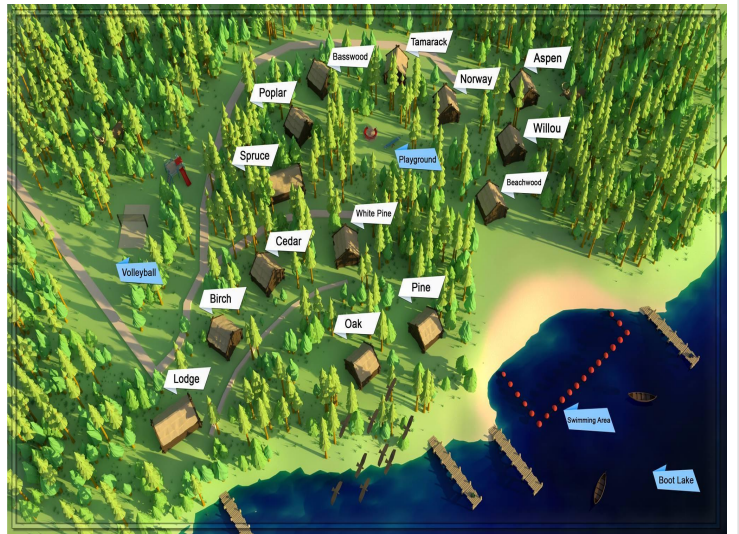
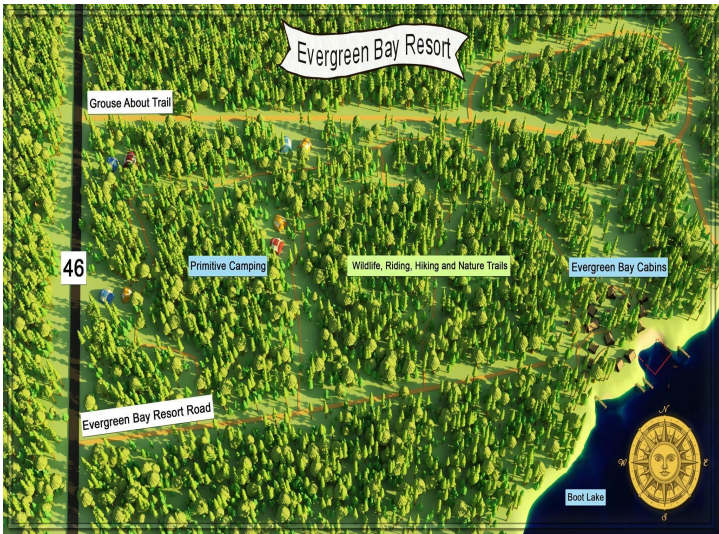
Call Affinity Real Estate

218-237-3333

info@affinityrealestate.com



Affinity Real Estate - 600 Park Avenue South - Park Rapids MN 56470



website: www.AffinityRealEstate.com | email: info@affinityrealestate.com | office: 218-237-3333 | fax: 218-237-3377



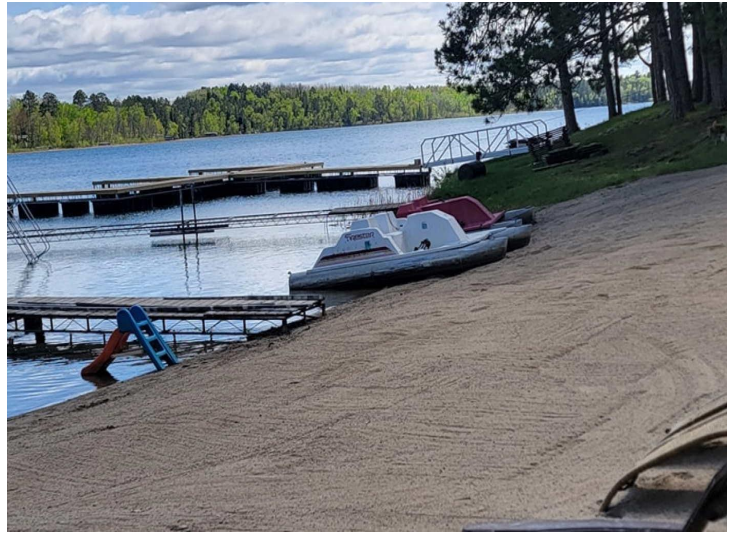
\$1,990,000
 MLS 6586172 Commercial
 Sale
 34243 County Highway 46
 Park Rapids MN 56470



website: www.AffinityRealEstate.com | email: info@affinityrealestate.com | office: 218-237-3333 | fax:218-237-3377

Affinity
REAL ESTATE INC

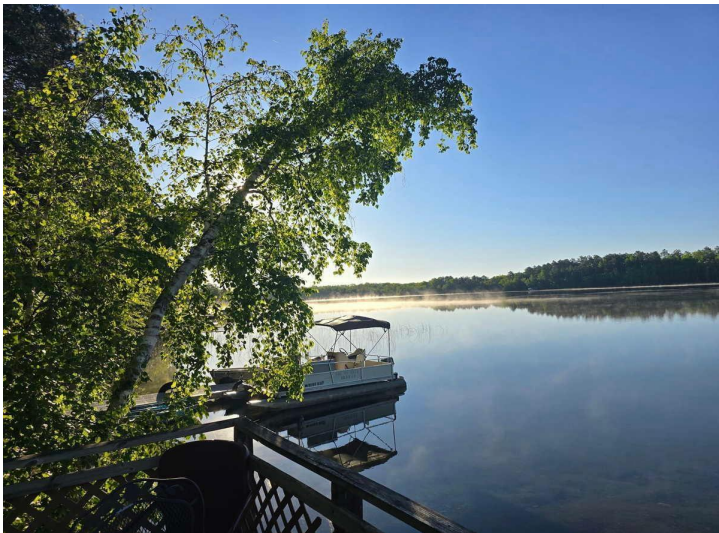
\$1,990,000
MLS 6586172 Commercial
Sale
34243 County Highway 46
Park Rapids MN 56470



website: www.AffinityRealEstate.com | email: info@affinityrealestate.com | office: 218-237-3333 | fax:218-237-3377



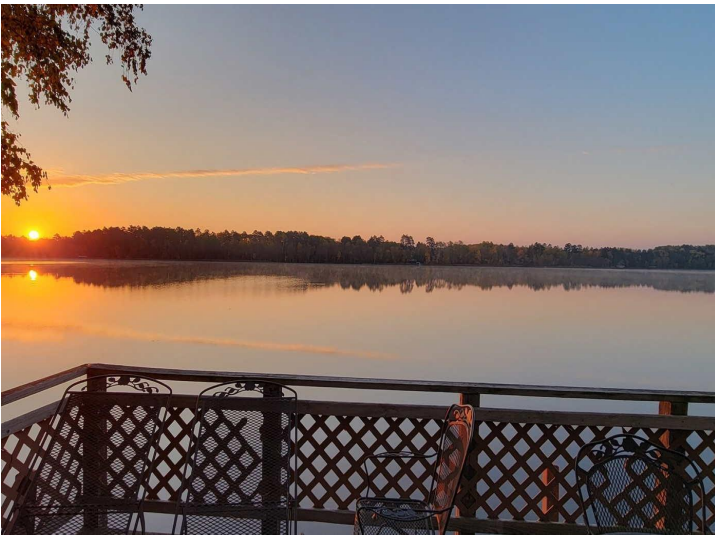
\$1,990,000
MLS 6586172 Commercial
Sale
34243 County Highway 46
Park Rapids MN 56470



website: www.AffinityRealEstate.com | email: info@affinityrealestate.com | office: 218-237-3333 | fax: 218-237-3377

Affinity
REAL ESTATE INC

\$1,990,000
MLS 6586172 Commercial
Sale
34243 County Highway 46
Park Rapids MN 56470



website: www.AffinityRealEstate.com | email: info@affinityrealestate.com | office: 218-237-3333 | fax: 218-237-3377

Affinity
REAL ESTATE INC

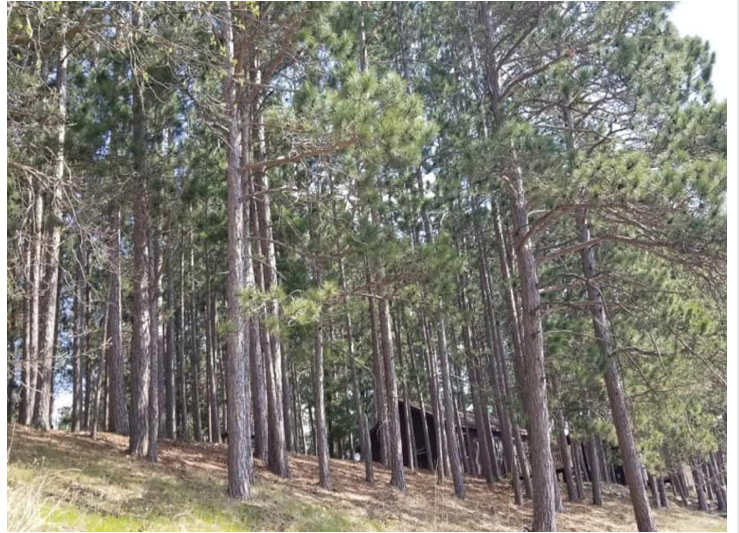
\$1,990,000
MLS 6586172 Commercial
Sale
34243 County Highway 46
Park Rapids MN 56470



website: www.AffinityRealEstate.com | email: info@affinityrealestate.com | office: 218-237-3333 | fax:218-237-3377

Affinity
REAL ESTATE INC

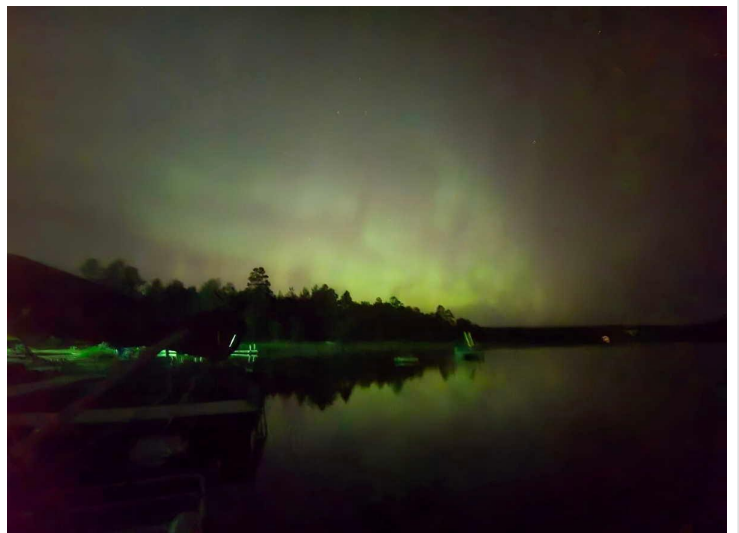
\$1,990,000
MLS 6586172 Commercial
Sale
34243 County Highway 46
Park Rapids MN 56470



website: www.AffinityRealEstate.com | email: info@affinityrealestate.com | office: 218-237-3333 | fax: 218-237-3377



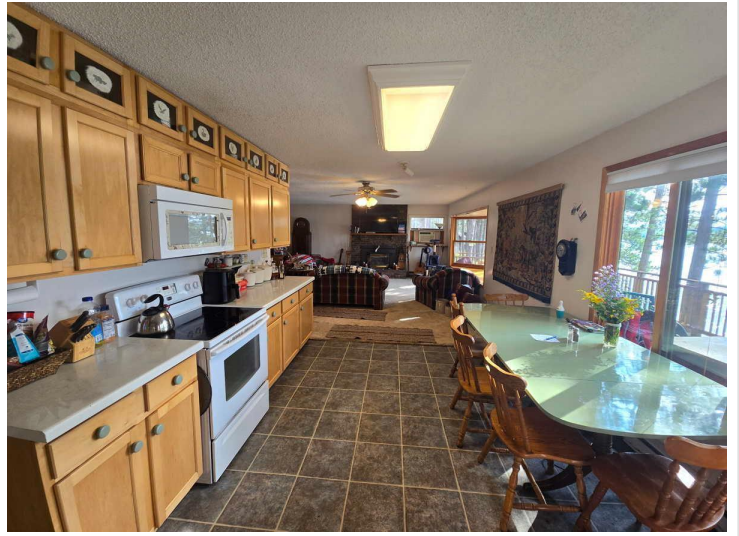
\$1,990,000
MLS 6586172 Commercial
Sale
34243 County Highway 46
Park Rapids MN 56470



website: www.AffinityRealEstate.com | email: info@affinityrealestate.com | office: 218-237-3333 | fax:218-237-3377



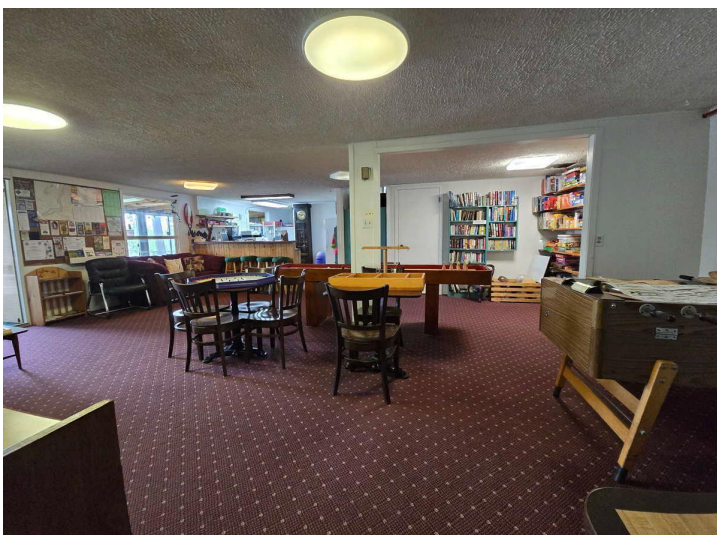
\$1,990,000
MLS 6586172 Commercial
Sale
34243 County Highway 46
Park Rapids MN 56470



website: www.AffinityRealEstate.com | email: info@affinityrealestate.com | office: 218-237-3333 | fax:218-237-3377

Affinity
REAL ESTATE INC

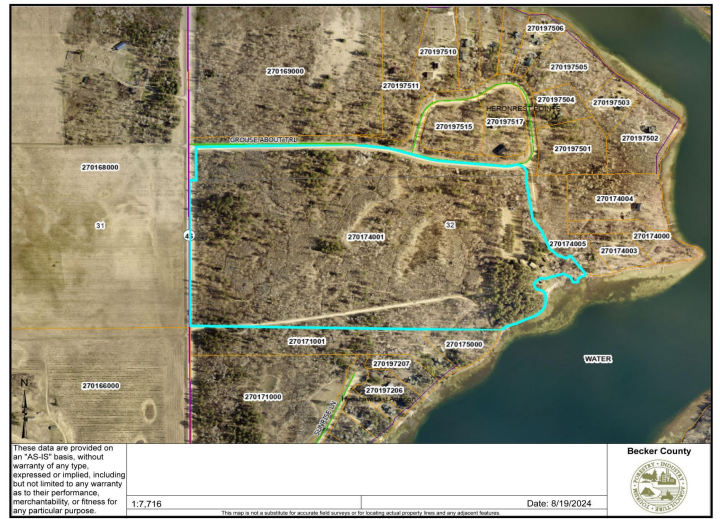
\$1,990,000
MLS 6586172 Commercial
Sale
34243 County Highway 46
Park Rapids MN 56470



website: www.AffinityRealEstate.com | email: info@affinityrealestate.com | office: 218-237-3333 | fax:218-237-3377

Affinity
REAL ESTATE INC

\$1,990,000
MLS 6586172 Commercial
Sale
34243 County Highway 46
Park Rapids MN 56470



website: www.AffinityRealEstate.com | email: info@affinityrealestate.com | office: 218-237-3333 | fax:218-237-3377



\$1,990,000
 MLS 6586172 Commercial
 Sale
 34243 County Highway 46
 Park Rapids MN 56470