



MLS 6586327 Lake Land

\$109,900

Description:

Big Basswood Lake. Beautiful lake property that is ready for you to bring your camper. This 1.9 acre lot with 228' of frontage is brushed and cleared to the water's edge with sand shoreline and dock. Terraced camper area with holding tank, electric and sandpoint, just needing a pump. If you're looking for the getaway near many recreational trails and quiet lake appeal, call for appointment today.

Additional Details:

Lot Acres	1.98
Lot Dimensions	228 x 418 x 172 x 412
School District	309
Taxes	\$318
Taxes with Assessments	\$318
Tax Year	2024

Additional Features:

Driving Directions:

From Park Rapids, go N on Hwy 71 11 miles, turn left on CR-41, proceed 9.5 miles and turn R onto 500th Avenue and continue 1.9 miles turning R on Basswood Lake Road and in .2 miles turn L on Basswood Road, property on L in 700 ft.



Listed By:
Affinity Real Estate Inc.

Affinity Real Estate Inc. participates in the Regional Multiple Listing Service of Minnesota, Inc Broker Reciprocity (sm) program, allowing us to display other broker's listings on our website. All properties are subject to prior sale, change or withdrawal.



Call Affinity Real Estate

218-237-3333

info@affinityrealestate.com



Affinity Real Estate - 600 Park Avenue South - Park Rapids MN 56470



website: www.AffinityRealEstate.com | email: info@affinityrealestate.com | office: 218-237-3333 | fax: 218-237-3377



\$109,900

MLS 6586327 Lake Land
34170 Basswood Road
Ponsford MN 56575



website: www.AffinityRealEstate.com | email: info@affinityrealestate.com | office: 218-237-3333 | fax: 218-237-3377



\$109,900

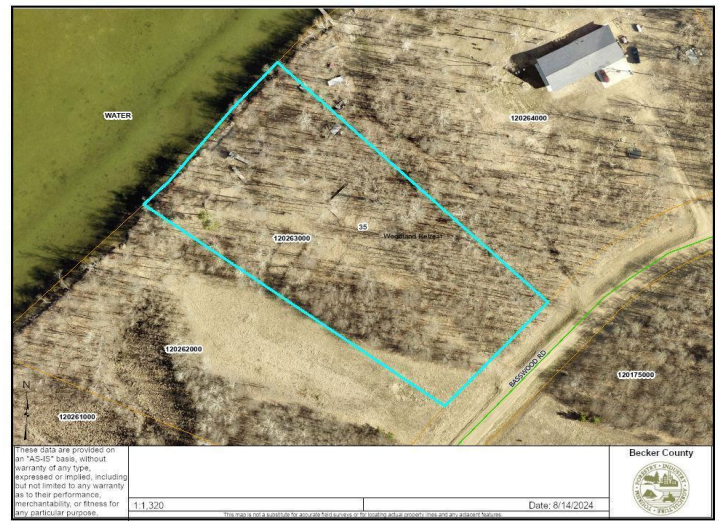
MLS 6586327 Lake Land
34170 Basswood Road
Ponsford MN 56575



website: www.AffinityRealEstate.com | email: info@affinityrealestate.com | office: 218-237-3333 | fax: 218-237-3377



\$109,900
MLS 6586327 Lake Land
34170 Basswood Road
Ponsford MN 56575



website: www.AffinityRealEstate.com | email: info@affinityrealestate.com | office: 218-237-3333 | fax: 218-237-3377



\$109,900
 MLS 6586327 Lake Land
 34170 Basswood Road
 Ponsford MN 56575