



MLS 6587049 Residential

\$69,900

0 sq ft
0 bedrooms
0 baths

20427 Fajita Loop
Park Rapids MN 56470

Status: Active

Description:

Experience the charm of Downtown Dorset with this home for sale. Perfectly situated near restaurants, shops, the Heartland Trail, and picturesque lakes. Embrace the opportunity to make this property your own, as it's being sold As-Is.

Additional Details:

Year Built	1998
Lot Acres	0.56
Lot Dimensions	175x140x175x140
School District	309
Taxes	\$638
Taxes with Assessments	\$638
Tax Year	2024

Additional Features:

Basement: None **Fuel:** Other **Heat:** None **Sewer:** Other **Water:** Sand Point **Air Conditioning:** None

Driving Directions:

From Park Rapids Hwy 34/71 head East to County 225 then head North to Fajita Loop then West on Fajita Loop to property on right.



Listed By:
Wolff & Simon Real Estate

Affinity Real Estate Inc. participates in the Regional Multiple Listing Service of Minnesota, Inc Broker Reciprocity (sm) program, allowing us to display other broker's listings on our website. All properties are subject to prior sale, change or withdrawal.



Call Affinity Real Estate

218-237-3333

info@affinityrealestate.com



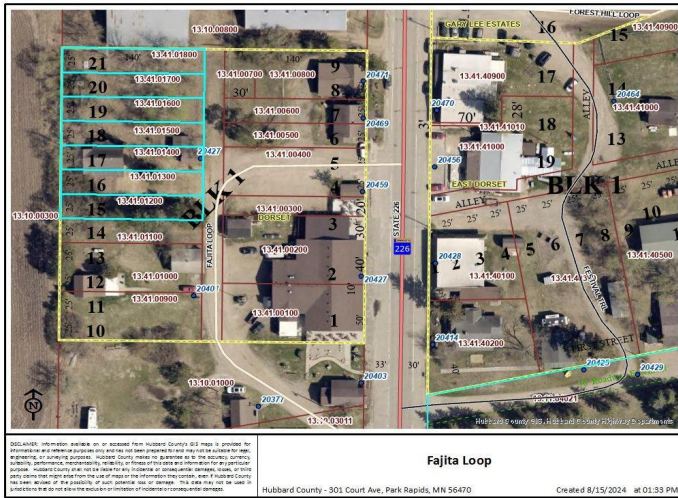
Affinity Real Estate - 600 Park Avenue South - Park Rapids MN 56470



website: www.AffinityRealEstate.com | email: info@affinityrealestate.com | office: 218-237-3333 | fax: 218-237-3377

Affinity
REAL ESTATE INC

\$69,900
MLS 6587049 Residential
20427 Fajita Loop
Park Rapids MN 56470



website: www.AffinityRealEstate.com | email: info@affinityrealestate.com | office: 218-237-3333 | fax: 218-237-3377



\$69,900
 MLS 6587049 Residential
 20427 Fajita Loop
 Park Rapids MN 56470