



MLS 6588315 Residential

**\$275,000**

1,584 sq ft  
2 bedrooms  
1 baths

21920 County 2  
Nevis MN 56467

Status: Active

**Description:**

Discover your perfect retreat on this 10 acre woodland sanctuary. Nestled in a tranquil seclusion, this property offers a 14x15 comfy front patio where you can savor stunning sunrises and watch deer, turkey and other wildlife visit daily. Just one mile from the lively city of Nevis, you'll enjoy both peaceful solitude and convenient access to local amenities. Adventure seekers will delight in the nearby ATV and snowmobile trails, providing endless opportunities for outdoor fun right from your doorstep. Enjoy fishing and water recreation with the abundance of lakes in the area. Whether you crave serene relaxation or thrilling exploration, this property is your gateway to nature's splendor and exhilarating adventure. Embrace the best of both worlds in this paradise. 10x14 log shed, 12x14 storage shed and 14x40 lean-to shed for additional storage.

**Additional Details:**

Year Built	1994
Lot Acres	10
Lot Dimensions	327x1318x327x1319
School District	308
Taxes	\$614
Taxes with Assessments	\$614
Tax Year	2024

**Additional Features:**

**Fuel:** Electric, Oil **Heat:** Baseboard, Forced Air

**Driving Directions:**

From Nevis head NW on Co Rd 18 toward Heartland State Trail, turn left onto North St, turn right onto Co Hwy 2/Bunyan Trails Rd, turn right, drive straight back to the property on the left.



Listed By:  
Edina Realty, Inc.

Affinity Real Estate Inc. participates in the Regional Multiple Listing Service of Minnesota, Inc Broker Reciprocity (sm) program, allowing us to display other broker's listings on our website. All properties are subject to prior sale, change or withdrawal.



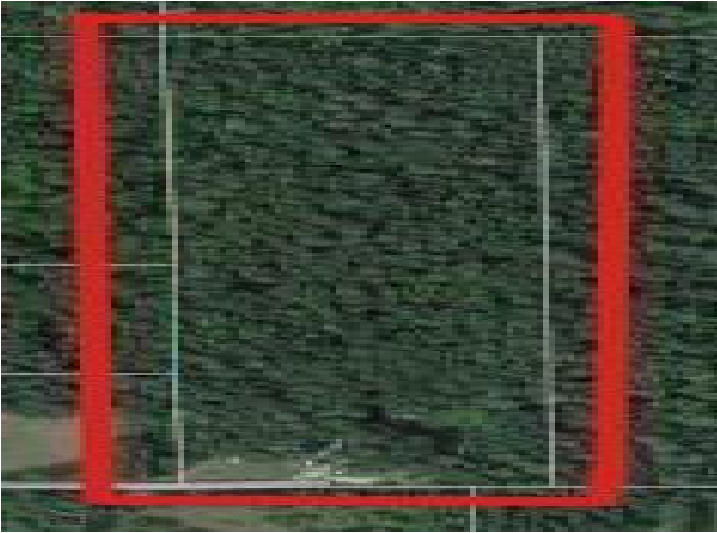
**Call Affinity Real Estate**

**218-237-3333**

**info@affinityrealestate.com**



**Affinity Real Estate - 600 Park Avenue South - Park Rapids MN 56470**



website: [www.AffinityRealEstate.com](http://www.AffinityRealEstate.com) | email: [info@affinityrealestate.com](mailto:info@affinityrealestate.com) | office: 218-237-3333 | fax:218-237-3377

**Affinity**  
REAL ESTATE INC

**\$275,000**  
MLS 6588315 Residential  
21920 County 2  
Nevis MN 56467



website: [www.AffinityRealEstate.com](http://www.AffinityRealEstate.com) | email: [info@affinityrealestate.com](mailto:info@affinityrealestate.com) | office: 218-237-3333 | fax:218-237-3377

**Affinity**  
REAL ESTATE INC

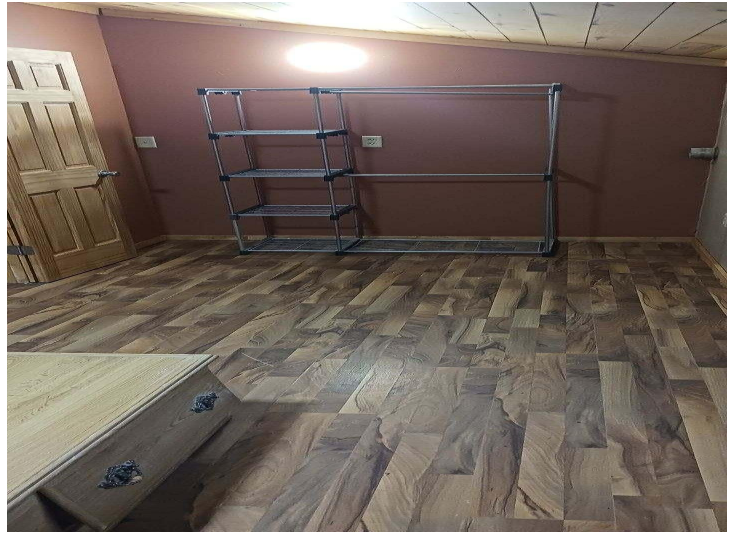
**\$275,000**  
MLS 6588315 Residential  
21920 County 2  
Nevis MN 56467



website: [www.AffinityRealEstate.com](http://www.AffinityRealEstate.com) | email: [info@affinityrealestate.com](mailto:info@affinityrealestate.com) | office: 218-237-3333 | fax:218-237-3377



**\$275,000**  
MLS 6588315 Residential  
21920 County 2  
Nevis MN 56467



website: [www.AffinityRealEstate.com](http://www.AffinityRealEstate.com) | email: [info@affinityrealestate.com](mailto:info@affinityrealestate.com) | office: 218-237-3333 | fax:218-237-3377

**Affinity**  
REAL ESTATE INC

**\$275,000**  
MLS 6588315 Residential  
21920 County 2  
Nevis MN 56467



website: [www.AffinityRealEstate.com](http://www.AffinityRealEstate.com) | email: [info@affinityrealestate.com](mailto:info@affinityrealestate.com) | office: 218-237-3333 | fax:218-237-3377



**\$275,000**  
MLS 6588315 Residential  
21920 County 2  
Nevis MN 56467