



MLS 6588483 Commercial

\$179,900

410 Pleasant Ave
Park Rapids MN 56470

Status: Active

Description:

Recently revived historic commercial building in downtown Park Rapids. Prime location just off Main St. Endless possibilities with this one, over 4000 sq ft just waiting for your vision.

Additional Details:

Year Built	1948
Lot Acres	0.24
Lot Dimensions	76 x 140
School District	309
Taxes	\$1,688
Taxes with Assessments	\$1,964
Tax Year	2025

Additional Features:

Basement: Block, Partial, Unfinished **Fuel:** Natural Gas **Heat:** Boiler, Fireplace(s) **Sewer:** City Sewer/Connected **Water:** City Water/Connected
Air Conditioning: Central Air

Driving Directions:

Go South on Main St from 34 4 blocks turn right/west on 4th street, property is on your right, on the corner of 4th and Pleasant.



Listed By:
Affinity Real Estate Inc.

Affinity Real Estate Inc. participates in the Regional Multiple Listing Service of Minnesota, Inc Broker Reciprocity (sm) program, allowing us to display other broker's listings on our website. All properties are subject to prior sale, change or withdrawal.



Call Affinity Real Estate

218-237-3333

info@affinityrealestate.com



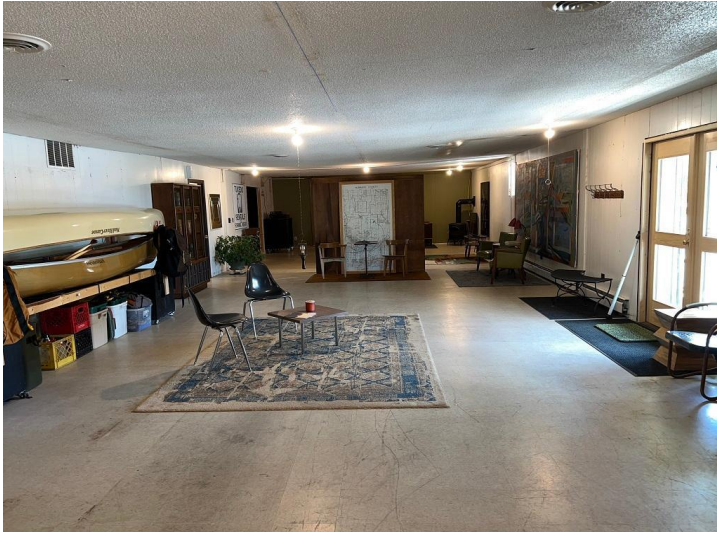
Affinity Real Estate - 600 Park Avenue South - Park Rapids MN 56470



website: www.AffinityRealEstate.com | email: info@affinityrealestate.com | office: 218-237-3333 | fax: 218-237-3377



\$179,900
MLS 6588483 Commercial
410 Pleasant Ave
Park Rapids MN 56470



website: www.AffinityRealEstate.com | email: info@affinityrealestate.com | office: 218-237-3333 | fax:218-237-3377

Affinity
REAL ESTATE INC

\$179,900
MLS 6588483 Commercial
410 Pleasant Ave
Park Rapids MN 56470



website: www.AffinityRealEstate.com | email: info@affinityrealestate.com | office: 218-237-3333 | fax:218-237-3377



\$179,900
MLS 6588483 Commercial
410 Pleasant Ave
Park Rapids MN 56470



website: www.AffinityRealEstate.com | email: info@affinityrealestate.com | office: 218-237-3333 | fax:218-237-3377



\$179,900
MLS 6588483 Commercial
410 Pleasant Ave
Park Rapids MN 56470