



MLS 6589089 Lake Land

\$119,900

Description:

Take a look at this lot! Excellent location about 1 mile from Downtown Walker, a total of 8.2 acres. Near trail system, Lake View, and mature trees.

Additional Details:

Lot Acres	8.2
Lot Dimensions	IRR
School District	113
Taxes	\$128
Taxes with Assessments	\$128
Tax Year	2024

Additional Features:

Driving Directions:

From Walker go south on 371 approx. 1 mile and turn right on Hillsdale Loop. Continue to Sign on the Right



Listed By:
Wolff & Simon Real Estate

Affinity Real Estate Inc. participates in the Regional Multiple Listing Service of Minnesota, Inc Broker Reciprocity (sm) program, allowing us to display other broker's listings on our website. All properties are subject to prior sale, change or withdrawal.



Call Affinity Real Estate

218-237-3333

info@affinityrealestate.com



Affinity Real Estate - 600 Park Avenue South - Park Rapids MN 56470



website: www.AffinityRealEstate.com | email: info@affinityrealestate.com | office: 218-237-3333 | fax:218-237-3377



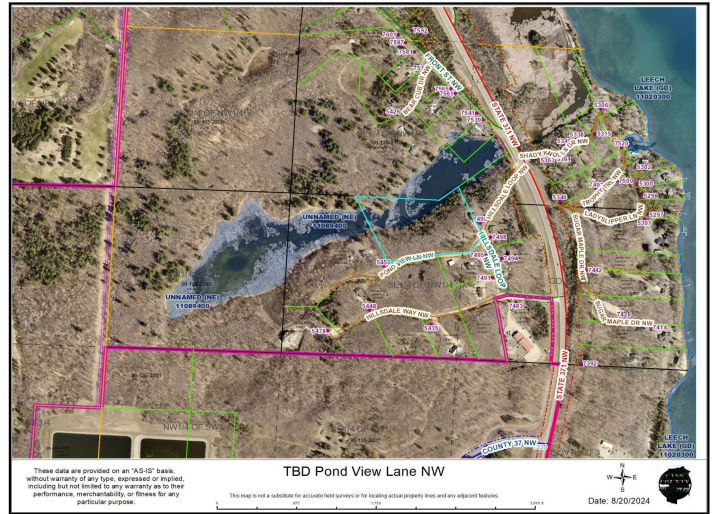
\$119,900
MLS 6589089 Lake Land
TBD Pond View Lane
Walker MN 56484



website: www.AffinityRealEstate.com | email: info@affinityrealestate.com | office: 218-237-3333 | fax:218-237-3377

Affinity
REAL ESTATE INC

\$119,900
MLS 6589089 Lake Land
TBD Pond View Lane
Walker MN 56484



website: www.AffinityRealEstate.com | email: info@affinityrealestate.com | office: 218-237-3333 | fax:218-237-3377



\$119,900
 MLS 6589089 Lake Land
 TBD Pond View Lane
 Walker MN 56484