



MLS 6589367 Residential

\$444,900

2,016 sq ft
3 bedrooms
2 baths

14208 County 9
Becida MN 56678

Status: Active

Description:

A rare Find! This 3-bedroom, 2-bathroom home offering over 2,000 sq/ft of comfortable living space nestled on approximately 150 acres of natural beauty. This super clean, well-maintained home features beautiful wood, providing warmth and character. Enjoy the convenience of a spacious deck right off the kitchen—perfect for outdoor dining, relaxation, and soaking in the peaceful surroundings.


Step inside and you'll find an abundance of storage, ideal for keeping everything organized. The attached double garage is finished, providing not only parking space but also the added luxury of an infrared sauna. It's a great space to unwind after a long day. For your four-legged friends, there's a secure dog run in the backyard, ensuring they have plenty of room to roam and play.

In addition to the attached garage, the property includes a large, detached 20x28 double garage, complete with fencing on one side—ideal for additional storage, workspace, or vehicle parking. Need more storage? You'll appreciate the 8x12 shed, perfect for gardening tools and outdoor equipment.

Animal enthusiasts will be delighted by the 24x24 chicken coop, which comes with attached fencing on both sides, providing ample space for your flock to roam safely. The coop is spacious and well-constructed, offering the potential for a thriving homestead. Additionally, the property features an old 28x50 agricultural building, which does require some repairs but could be restored for various uses—whether for additional storage, equipment, or even livestock.

The expansive 150-acre property offers an incredible mix of deciduous and coniferous trees, providing not only stunning natural scenery but also great habitat for wildlife. The presence of some wetlands on the property makes it an ideal spot for nature enthusiasts and hunters alike. The diversity of the land creates opportunities for quality deer hunting and other wildlife observation. Whether you're an avid hunter or simply enjoy the beauty of nature, this property offers endless possibilities.

For those interested in sustainable living, there's plenty of space to plant a garden or even establish a greenhouse. Currently, a neighboring farmer plants and harvests a field on the property, but the land is ready for you to take over and do as you please. Whether you're looking to continue agricultural use or convert the land for personal projects, the options are limitless.


 Listed By:
 Headwaters Realty Services
 This property is its fantastic pine tree plantation, which covers several acres. These meticulously planted
 trees are arranged in neat rows in the back yard, creating a striking landscape. The layout is not only aesthetically pleasing
 but also practical, allowing for easy access for maintenance or storage. The property also provides
 a series of Minnesota DNR Broker Reciprocity (BR) program all-year maintenance of state wildlife habitat
 us to display other broker's listings on our website. All properties are subject to prior sale, change or withdrawal.
 and enjoy.


Call Affinity Real Estate
218-237-3333
info@affinityrealestate.com



Affinity Real Estate - 600 Park Avenue South - Park Rapids MN 56470

Additional privacy is afforded by a partial privacy fence that runs along Co Rd 9, ensuring seclusion and tranquility while still maintaining easy access to nearby amenities.

The location of this property is simply unbeatable. You're just a short distance from Le Salle Lake State Recreation



website: www.AffinityRealEstate.com | email: info@affinityrealestate.com | office: 218-237-3333 | fax: 218-237-3377

Affinity
REAL ESTATE INC

\$444,900
MLS 6589367 Residential
14208 County 9
Becida MN 56678



website: www.AffinityRealEstate.com | email: info@affinityrealestate.com | office: 218-237-3333 | fax:218-237-3377



\$444,900
MLS 6589367 Residential
14208 County 9
Becida MN 56678



website: www.AffinityRealEstate.com | email: info@affinityrealestate.com | office: 218-237-3333 | fax:218-237-3377

Affinity
REAL ESTATE INC

\$444,900
MLS 6589367 Residential
14208 County 9
Becida MN 56678



website: www.AffinityRealEstate.com | email: info@affinityrealestate.com | office: 218-237-3333 | fax:218-237-3377

Affinity
REAL ESTATE INC

\$444,900
MLS 6589367 Residential
14208 County 9
Becida MN 56678



website: www.AffinityRealEstate.com | email: info@affinityrealestate.com | office: 218-237-3333 | fax:218-237-3377

Affinity
REAL ESTATE INC

\$444,900
MLS 6589367 Residential
14208 County 9
Becida MN 56678



website: www.AffinityRealEstate.com | email: info@affinityrealestate.com | office: 218-237-3333 | fax:218-237-3377



\$444,900
MLS 6589367 Residential
14208 County 9
Becida MN 56678



website: www.AffinityRealEstate.com | email: info@affinityrealestate.com | office: 218-237-3333 | fax:218-237-3377



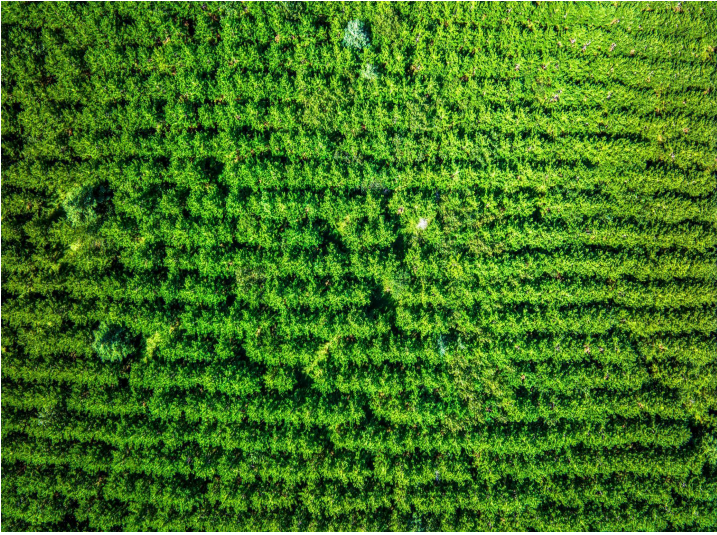
\$444,900
MLS 6589367 Residential
14208 County 9
Becida MN 56678



website: www.AffinityRealEstate.com | email: info@affinityrealestate.com | office: 218-237-3333 | fax:218-237-3377



\$444,900
MLS 6589367 Residential
14208 County 9
Becida MN 56678



website: www.AffinityRealEstate.com | email: info@affinityrealestate.com | office: 218-237-3333 | fax:218-237-3377



\$444,900
MLS 6589367 Residential
14208 County 9
Becida MN 56678



website: www.AffinityRealEstate.com | email: info@affinityrealestate.com | office: 218-237-3333 | fax:218-237-3377



\$444,900
MLS 6589367 Residential
14208 County 9
Becida MN 56678



website: www.AffinityRealEstate.com | email: info@affinityrealestate.com | office: 218-237-3333 | fax:218-237-3377



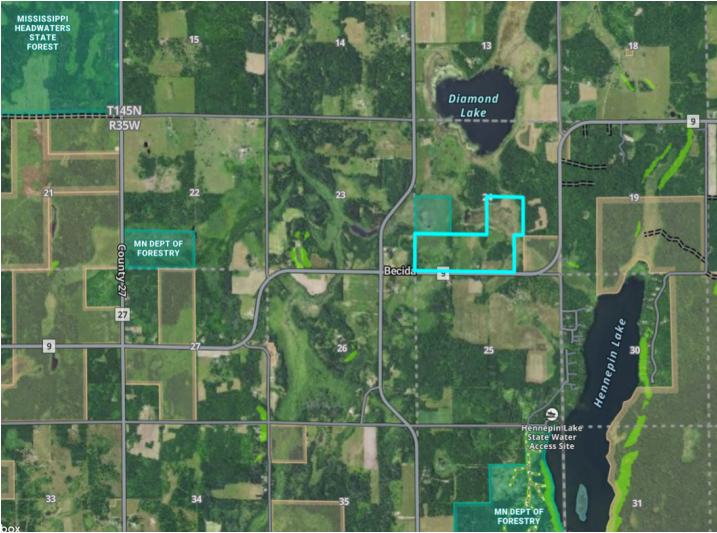
\$444,900
MLS 6589367 Residential
14208 County 9
Becida MN 56678



website: www.AffinityRealEstate.com | email: info@affinityrealestate.com | office: 218-237-3333 | fax:218-237-3377



\$444,900
MLS 6589367 Residential
14208 County 9
Becida MN 56678



website: www.AffinityRealEstate.com | email: info@affinityrealestate.com | office: 218-237-3333 | fax:218-237-3377



\$444,900
MLS 6589367 Residential
14208 County 9
Becida MN 56678