



MLS 6589509 Lake Land

**\$79,900**

**Description:**

Big Basswood Lake - Perfect lot to start the dream of your own getaway and lake experience. This 2.04 acre lot has clearing to the water's edge where you could bring your camper or tent without any extra work. There is 248' of undeveloped sand shoreline and perfect lake for your canoe, kayak or paddleboard. The area is known for many recreational trails bordering the Smoky Hills and Two Inlets State Forest. Don't miss out, call today to make an appointment!

**Additional Details:**

Lot Acres	2.04
Lot Dimensions	248 x 412 x 149 x 498
School District	309
Taxes	\$248
Taxes with Assessments	\$248
Tax Year	2024

**Additional Features:**

**Driving Directions:**

From Park Rapids, go N on Hwy 71 11 miles, turn left on CR-41, proceed 9.5 miles and turn R onto 500th Avenue and continue 1.9 miles turning R on Basswood Lake Road and in .2 miles turn L on Basswood Road, property on L in 500ft.



Listed By:  
Affinity Real Estate Inc.

Affinity Real Estate Inc. participates in the Regional Multiple Listing Service of Minnesota, Inc Broker Reciprocity (sm) program, allowing us to display other broker's listings on our website. All properties are subject to prior sale, change or withdrawal.



**Call Affinity Real Estate**

**218-237-3333**

**info@affinityrealestate.com**



**Affinity Real Estate - 600 Park Avenue South - Park Rapids MN 56470**



website: [www.AffinityRealEstate.com](http://www.AffinityRealEstate.com) | email: [info@affinityrealestate.com](mailto:info@affinityrealestate.com) | office: 218-237-3333 | fax:218-237-3377



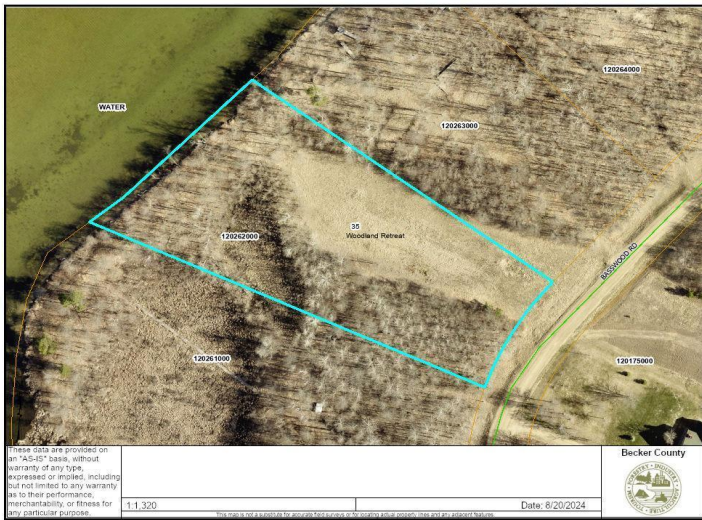
**\$79,900**  
MLS 6589509 Lake Land  
XXX Basswood Road  
Ponsford MN 56575



website: [www.AffinityRealEstate.com](http://www.AffinityRealEstate.com) | email: [info@affinityrealestate.com](mailto:info@affinityrealestate.com) | office: 218-237-3333 | fax:218-237-3377



**\$79,900**  
MLS 6589509 Lake Land  
XXX Basswood Road  
Ponsford MN 56575



website: [www.AffinityRealEstate.com](http://www.AffinityRealEstate.com) | email: [info@affinityrealestate.com](mailto:info@affinityrealestate.com) | office: 218-237-3333 | fax: 218-237-3377



**\$79,900**  
 MLS 6589509 Lake Land  
 XXX Basswood Road  
 Ponsford MN 56575