



MLS 6590168 Land

\$44,900

0.48 Acres
Raw Land

609 Pleasant Street
Nevis MN 56467

Status: Active

Description:

Set on .48 acres, this oversized city lot is just down the street from the Nevis School and across the road from a city park and Deer Lake. City utilities and power are already in the lot. The property is ready to build with an older garage included.

Additional Details:

Lot Acres	0.48
Lot Dimensions	150x140
School District	308
Taxes	\$368
Taxes with Assessments	\$368
Tax Year	2024

Additional Features:

Driving Directions:

From 34/71 in Park Rapids, East on 34 to a left on Bunyan Trails Dr. in Nevis. Follow to a left on Pleasant St. W to property.



Listed By:
Wolff & Simon Real Estate

Affinity Real Estate Inc. participates in the Regional Multiple Listing Service of Minnesota, Inc Broker Reciprocity (sm) program, allowing us to display other broker's listings on our website. All properties are subject to prior sale, change or withdrawal.



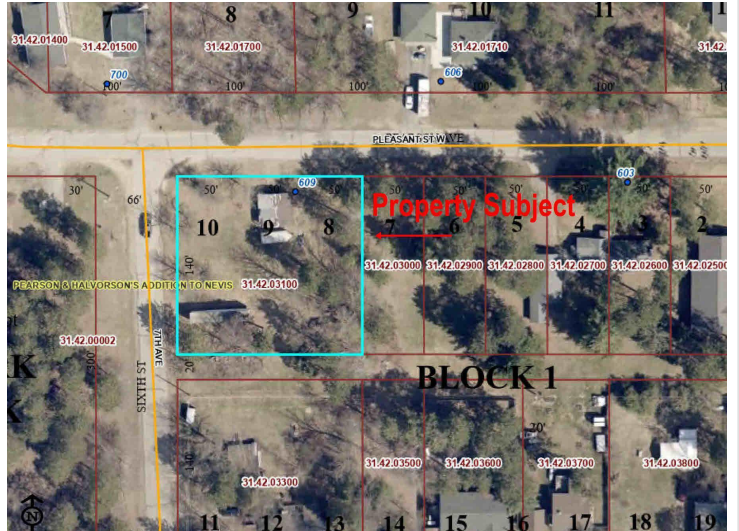
Call Affinity Real Estate

218-237-3333

info@affinityrealestate.com



Affinity Real Estate - 600 Park Avenue South - Park Rapids MN 56470



website: www.AffinityRealEstate.com | email: info@affinityrealestate.com | office: 218-237-3333 | fax:218-237-3377



\$44,900
MLS 6590168 Land
609 Pleasant Street
Nevis MN 56467