



MLS 6590541 Lake Land

\$168,500

Description:

Lake lot just east of Bemidji on Ose Lake with Mississippi River access to the Cass Lake chain of lakes! Approximately 107 ft of lakeshore and land on both sides of Lemon Lane. Enjoy this lot as is or build your new lake home!

Additional Details:

Lot Acres	4.67
Lot Dimensions	irregular
School District	31
Taxes	\$422
Taxes with Assessments	\$422
Tax Year	2024

Additional Features:

Driving Directions:

From Paul and Babe, head south on 197, left on Roosevelt Rd, right on Wonder Green Ln, right on Lemon Ln to 1565.



Listed By:
Realty Experts, LLC

Affinity Real Estate Inc. participates in the Regional Multiple Listing Service of Minnesota, Inc Broker Reciprocity (sm) program, allowing us to display other broker's listings on our website. All properties are subject to prior sale, change or withdrawal.



Call Affinity Real Estate

218-237-3333

info@affinityrealestate.com



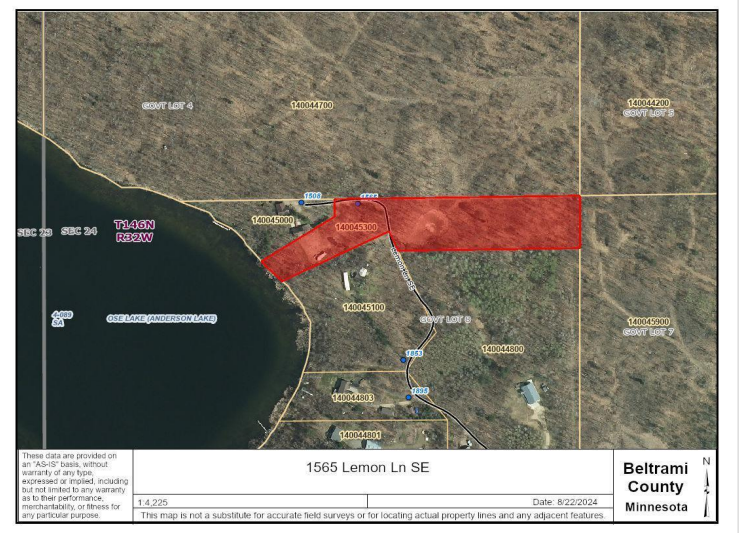
Affinity Real Estate - 600 Park Avenue South - Park Rapids MN 56470



website: www.AffinityRealEstate.com | email: info@affinityrealestate.com | office: 218-237-3333 | fax:218-237-3377



\$168,500
MLS 6590541 Lake Land
1565 Lemon Lane
Bemidji MN 56601



website: www.AffinityRealEstate.com | email: info@affinityrealestate.com | office: 218-237-3333 | fax:218-237-3377



\$168,500
 MLS 6590541 Lake Land
 1565 Lemon Lane
 Bemidji MN 56601