



MLS 6590629 Land

**\$238,000**

6.77 Acres  
Other

37661 Park Drive  
Park Rapids MN 56470

Status: Active

**Description:**

This property is conveniently located near the East entrance of Itasca State Park right off of Hwy 200. It has a beautiful 60' x 120' storage building with 7920 square feet of storage and a newer well. This property appears to have been a campground of some sort previously. Now it has great potential for many different uses.

**Additional Details:**

Lot Acres	6.77
Lot Dimensions	6.77 ac
School District	309
Taxes	\$520
Taxes with Assessments	\$520
Tax Year	2024

**Additional Features:**

**Driving Directions:**

21 miles north of Park Rapids on Hwy 71 to Hwy 200. 1.3 north on Hwy 200 to North Park Drive



Listed By:  
RE/MAX Grand

Affinity Real Estate Inc. participates in the Regional Multiple Listing Service of Minnesota, Inc Broker Reciprocity (sm) program, allowing us to display other broker's listings on our website. All properties are subject to prior sale, change or withdrawal.



**Call Affinity Real Estate**

**218-237-3333**

**info@affinityrealestate.com**



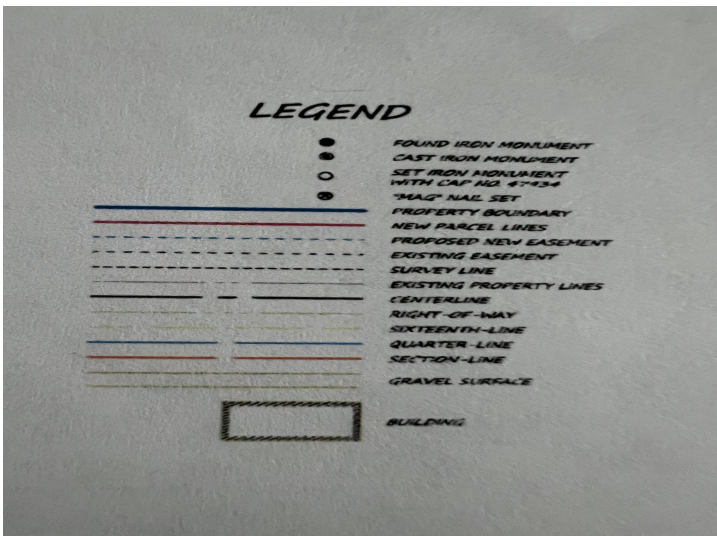
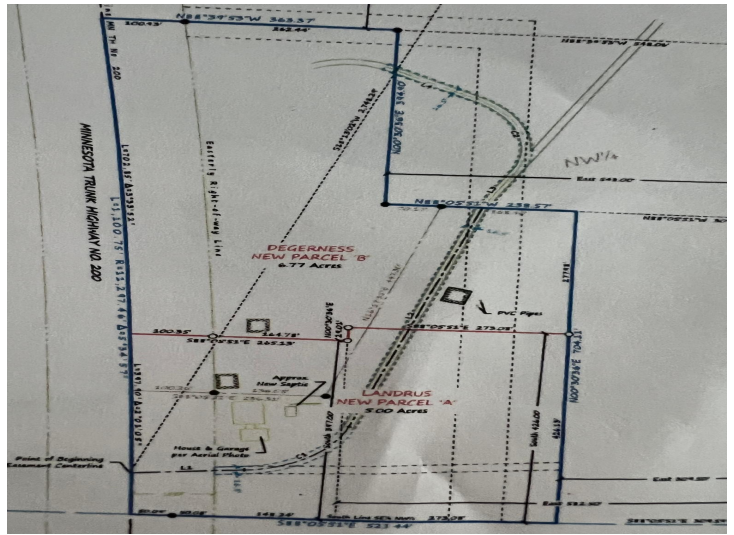
**Affinity Real Estate - 600 Park Avenue South - Park Rapids MN 56470**



website: [www.AffinityRealEstate.com](http://www.AffinityRealEstate.com) | email: [info@affinityrealestate.com](mailto:info@affinityrealestate.com) | office: 218-237-3333 | fax: 218-237-3377

**Affinity**  
REAL ESTATE INC

**\$238,000**  
MLS 6590629 Land  
37661 Park Drive  
Park Rapids MN 56470



website: [www.AffinityRealEstate.com](http://www.AffinityRealEstate.com) | email: [info@affinityrealestate.com](mailto:info@affinityrealestate.com) | office: 218-237-3333 | fax: 218-237-3377



**\$238,000**  
 MLS 6590629 Land  
 37661 Park Drive  
 Park Rapids MN 56470