



MLS 6590698 Lake Home

\$379,900

1,904 sq ft
3 bedrooms
2 baths

54886 Sunset Street
Osage MN 56570

Waterfront: Straight

Status: Hold

Description:

Discover your ideal lakeside retreat on Straight Lake in Osage, MN! This inviting year-round home offers 3 bedrooms, 2 bathrooms, and a warm knotty pine 4-season porch. Set on 2.38 acres with 200' of lakeshore, the property features a walk-out basement, gradual elevation to the lake which is perfect for water sports and fishing, large pine trees and a Northern view. Enjoy added convenience with a one-stall garage with a lean-to. The location is just a short distance from a tarred road, the local volunteer fire department, the local grocery store, and the local bar and restaurant. Plus, you're close to the Smokey Hills and Two Inlet State Forest for hunting, trail riding, and nature adventures. Experience serene lakeside living with easy access to recreation and essential services!

Additional Details:

Year Built	1970
Lot Acres	2.38
Lot Dimensions	200x442x200x412
Garage Stalls	1
School District	309
Taxes	\$1,540
Taxes with Assessments	\$1,600
Tax Year	2024

Additional Features:

Basement: Block, Finished, Walkout **Fuel:** Electric, Oil **Garage:** 1 **Heat:** Forced Air, Other, Radiant **Sewer:** Private Sewer, Tank with Drainage Field **Water:** Sand Point **Air Conditioning:** Central Air

Driving Directions:

From Hwys. 71/34 in Park Rapids, West on Hwy 34 to Becker County 48. Right on County 48 to a left on Sunset Street. Property is on the right.



Listed By:
Coldwell Banker Crown Realtors

Affinity Real Estate Inc. participates in the Regional Multiple Listing Service of Minnesota, Inc Broker Reciprocity (sm) program, allowing us to display other broker's listings on our website. All properties are subject to prior sale, change or withdrawal.



Call Affinity Real Estate

218-237-3333

info@affinityrealestate.com



Affinity Real Estate - 600 Park Avenue South - Park Rapids MN 56470



website: www.AffinityRealEstate.com | email: info@affinityrealestate.com | office: 218-237-3333 | fax:218-237-3377



\$379,900
MLS 6590698 Lake Home
54886 Sunset Street
Osage MN 56570



website: www.AffinityRealEstate.com | email: info@affinityrealestate.com | office: 218-237-3333 | fax: 218-237-3377

Affinity
REAL ESTATE INC

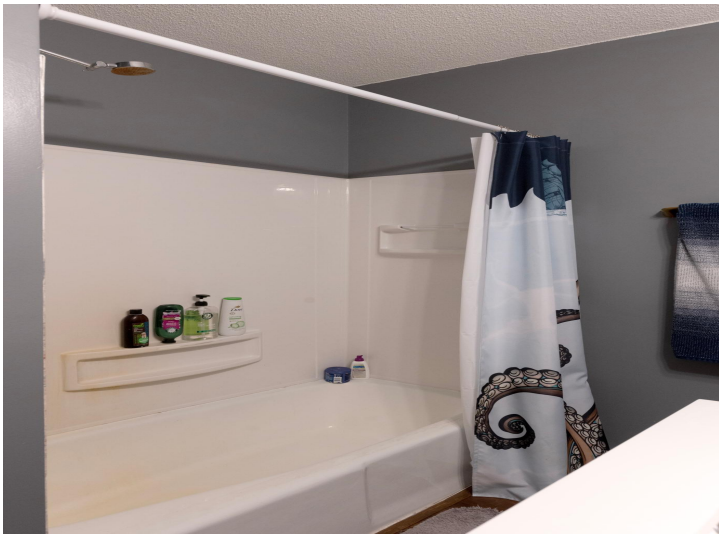
\$379,900
MLS 6590698 Lake Home
54886 Sunset Street
Osage MN 56570



website: www.AffinityRealEstate.com | email: info@affinityrealestate.com | office: 218-237-3333 | fax:218-237-3377

Affinity
REAL ESTATE INC

\$379,900
MLS 6590698 Lake Home
54886 Sunset Street
Osage MN 56570



website: www.AffinityRealEstate.com | email: info@affinityrealestate.com | office: 218-237-3333 | fax:218-237-3377

Affinity
REAL ESTATE INC

\$379,900
MLS 6590698 Lake Home
54886 Sunset Street
Osage MN 56570



website: www.AffinityRealEstate.com | email: info@affinityrealestate.com | office: 218-237-3333 | fax:218-237-3377

Affinity
REAL ESTATE INC

\$379,900
MLS 6590698 Lake Home
54886 Sunset Street
Osage MN 56570



website: www.AffinityRealEstate.com | email: info@affinityrealestate.com | office: 218-237-3333 | fax:218-237-3377

Affinity
REAL ESTATE INC

\$379,900
MLS 6590698 Lake Home
54886 Sunset Street
Osage MN 56570



website: www.AffinityRealEstate.com | email: info@affinityrealestate.com | office: 218-237-3333 | fax:218-237-3377



\$379,900
MLS 6590698 Lake Home
54886 Sunset Street
Osage MN 56570



website: www.AffinityRealEstate.com | email: info@affinityrealestate.com | office: 218-237-3333 | fax:218-237-3377



\$379,900
MLS 6590698 Lake Home
54886 Sunset Street
Osage MN 56570