



MLS 6590745 Land

\$35,000

0.69 Acres
Raw Land

L1 B8 TBD White Overlook Drive
Breezy Point MN 56472

Status: Active

Description:

Set in an established Breezy Point neighborhood, this prime lot offers a great location for your future home. Situated on the corner of Hillside Pass and White Overlook Drive, this heavily wooded lot features paved roads on two sides. Take advantage of the convenient location set between Breezy Point and Pequot Lakes and just minutes away from great restaurants, shopping, a medical clinic, ice arena, premier golf courses and Pelican Lake!

Additional Details:

Lot Acres	0.69
Lot Dimensions	123 x 248 x 123 x 239
School District	186
Taxes	\$132
Taxes with Assessments	\$132
Tax Year	2025

Additional Features:

Driving Directions:

From the Breezy Point gates, go west on County Road 11, then turn right onto Ranchette Drive. Turn right onto Winter Trail then left onto Hillside Pass. Turn right on White Overlook Drive. Lot is at the corner of White Overlook Drive and Hillside Pass.



Listed By:
Larson Group Real Estate/Kelle

Affinity Real Estate Inc. participates in the Regional Multiple Listing Service of Minnesota, Inc Broker Reciprocity (sm) program, allowing us to display other broker's listings on our website. All properties are subject to prior sale, change or withdrawal.



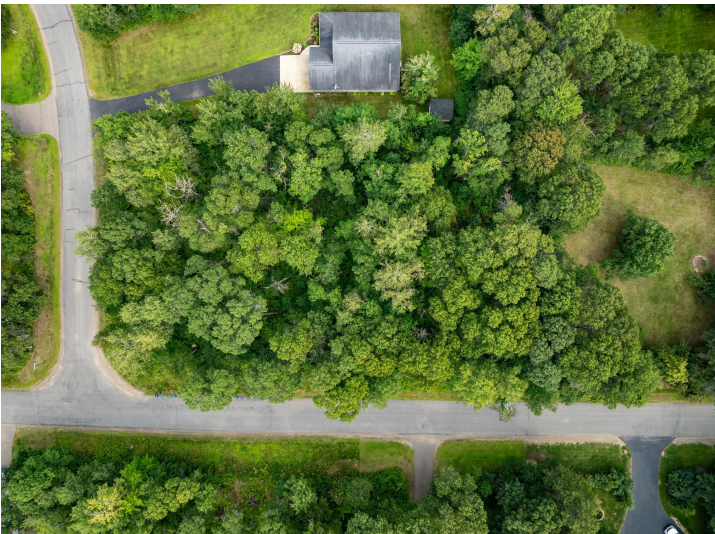
Call Affinity Real Estate

218-237-3333

info@affinityrealestate.com



Affinity Real Estate - 600 Park Avenue South - Park Rapids MN 56470



website: www.AffinityRealEstate.com | email: info@affinityrealestate.com | office: 218-237-3333 | fax: 218-237-3377



\$35,000
 MLS 6590745 Land
 L1 B8 TBD White Overlook
 Drive
 Breezy Point MN 56472