



MLS 6591314 Lake Home

\$450,000

1,936 sq ft
3 bedrooms
2 baths

26217 Rice Lake Trail
Detroit Lakes MN 56501

Waterfront: Rice Lake (Holmesville Twp.)

Status: Active

Description:

If you have been searching for the perfect lake home and your results has you feeling without, then wait until you see this beauty! Located in the heart of lakes country, this beautiful, almost new (built in 2020) home on Rice lake has what you need! Sitting on over 2 acres of land, this home has 200 ft of lakeshore frontage! This like new home has 3 large bedrooms, 2 bathrooms, a large family room with walk out patio and so much more! Upstairs you have a large open kitchen and living room to host the largest gatherings you can imagine! With custom cabinets and newer appliances, no corners were cut in this build! If space to grow is what you want, or just room for others to come, this home has it all! Contact your favorite Realtor for a showing TODAY!

Additional Details:

Year Built	2020
Lot Acres	2.07
Lot Dimensions	irreg
School District	22
Taxes	\$2,052
Taxes with Assessments	\$2,052
Tax Year	2023

Additional Features:

Basement: 8 ft+ Pour **Fuel:** Propane **Heat:** Forced Air **Sewer:** Private Sewer **Water:** Well **Air Conditioning:** Central Air

Driving Directions:



Listed By:
EXIT Realty Metro

Affinity Real Estate Inc. participates in the Regional Multiple Listing Service of Minnesota, Inc Broker Reciprocity (sm) program, allowing us to display other broker's listings on our website. All properties are subject to prior sale, change or withdrawal.



Call Affinity Real Estate

218-237-3333

info@affinityrealestate.com



Affinity Real Estate - 600 Park Avenue South - Park Rapids MN 56470



website: www.AffinityRealEstate.com | email: info@affinityrealestate.com | office: 218-237-3333 | fax:218-237-3377

Affinity
REAL ESTATE INC

\$450,000
MLS 6591314 Lake Home
26217 Rice Lake Trail
Detroit Lakes MN 56501



website: www.AffinityRealEstate.com | email: info@affinityrealestate.com | office: 218-237-3333 | fax:218-237-3377



\$450,000
MLS 6591314 Lake Home
26217 Rice Lake Trail
Detroit Lakes MN 56501



website: www.AffinityRealEstate.com | email: info@affinityrealestate.com | office: 218-237-3333 | fax:218-237-3377



\$450,000
MLS 6591314 Lake Home
26217 Rice Lake Trail
Detroit Lakes MN 56501



website: www.AffinityRealEstate.com | email: info@affinityrealestate.com | office: 218-237-3333 | fax: 218-237-3377

Affinity
REAL ESTATE INC

\$450,000
MLS 6591314 Lake Home
26217 Rice Lake Trail
Detroit Lakes MN 56501



website: www.AffinityRealEstate.com | email: info@affinityrealestate.com | office: 218-237-3333 | fax: 218-237-3377

Affinity
REAL ESTATE INC

\$450,000
MLS 6591314 Lake Home
26217 Rice Lake Trail
Detroit Lakes MN 56501



website: www.AffinityRealEstate.com | email: info@affinityrealestate.com | office: 218-237-3333 | fax: 218-237-3377

Affinity
REAL ESTATE INC

\$450,000
MLS 6591314 Lake Home
26217 Rice Lake Trail
Detroit Lakes MN 56501



website: www.AffinityRealEstate.com | email: info@affinityrealestate.com | office: 218-237-3333 | fax:218-237-3377



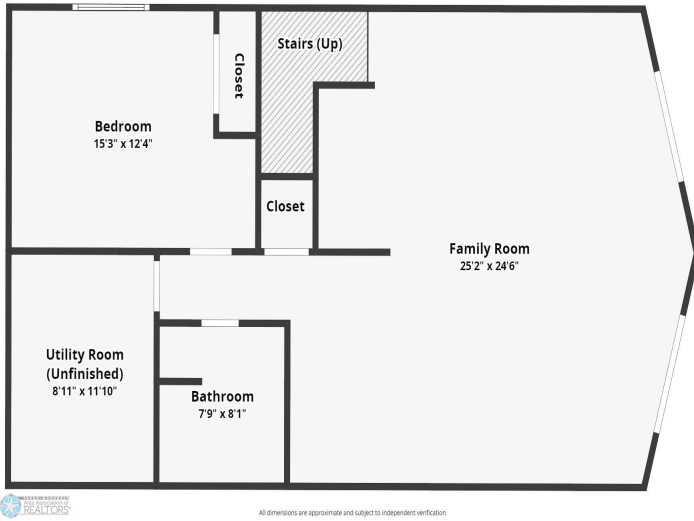
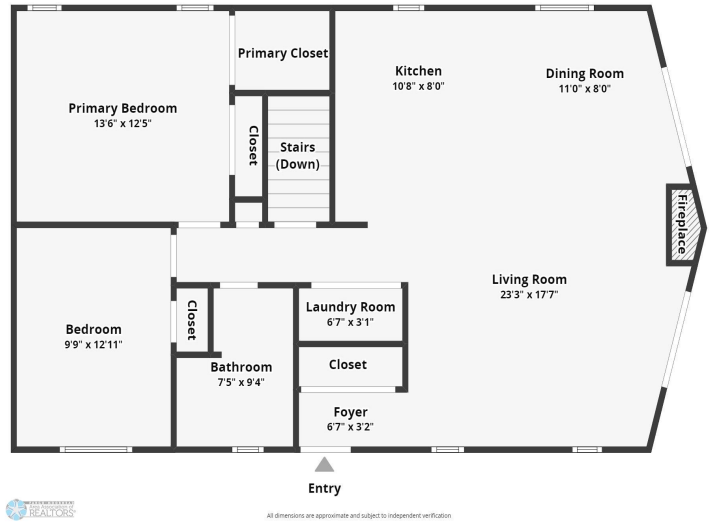
\$450,000
MLS 6591314 Lake Home
26217 Rice Lake Trail
Detroit Lakes MN 56501



website: www.AffinityRealEstate.com | email: info@affinityrealestate.com | office: 218-237-3333 | fax:218-237-3377

Affinity
REAL ESTATE INC

\$450,000
MLS 6591314 Lake Home
26217 Rice Lake Trail
Detroit Lakes MN 56501



website: www.AffinityRealEstate.com | email: info@affinityrealestate.com | office: 218-237-3333 | fax: 218-237-3377



\$450,000
 MLS 6591314 Lake Home
 26217 Rice Lake Trail
 Detroit Lakes MN 56501