



MLS 6591376 Residential

**\$469,900**

3,398 sq ft  
4 bedrooms  
4 baths

16168 560th Avenue  
Menahga MN 56464

Status: Active

**Description:**

An inspiring country home set on 7 acres. Panoramic views of the country side and tons of space, inside and out. 3,300+ square foot home with a bright and open feel and an excellent layout. 4 beds, 4 baths, high ceilings, Birch floors, Red Elm cabinets, tile floors (in laundry and baths), large main bedroom with a three quarter bath and walk-in closet, huge laundry room, sauna, walk-out basement, geothermal heat, wood stove, cement board siding, attached triple garage and the list goes on! A large yard with a variety of apple and plum trees planted and an established garden space. A 44' x 60' pole building with a large processing/canning room, a sauna building and a hen house. An excellent property with tons of possibilities.

**Additional Details:**

Year Built	2005
Lot Acres	7
Lot Dimensions	TBD
Garage Stalls	3
School District	821
Taxes	(unreported)
Taxes with Assessments	(unreported)
Tax Year	2024

**Additional Features:**

**Fuel:** Electric, Other, Wood **Heat:** Geothermal, Wood Stove

**Driving Directions:**

From Hwys. 71/34 in Park Rapids. South on US 71 towards Menahga. Right onto Wadena CR-16 which turns into CR 40. Follow West to a right onto 560th Ave. First drive on the left.



Listed By:  
Coldwell Banker Crown Realtors

Affinity Real Estate Inc. participates in the Regional Multiple Listing Service of Minnesota, Inc Broker Reciprocity (sm) program, allowing us to display other broker's listings on our website. All properties are subject to prior sale, change or withdrawal.



**Call Affinity Real Estate**

**218-237-3333**

**info@affinityrealestate.com**



**Affinity Real Estate - 600 Park Avenue South - Park Rapids MN 56470**





website: [www.AffinityRealEstate.com](http://www.AffinityRealEstate.com) | email: [info@affinityrealestate.com](mailto:info@affinityrealestate.com) | office: 218-237-3333 | fax: 218-237-3377

**Affinity**  
REAL ESTATE INC

**\$469,900**  
MLS 6591376 Residential  
16168 560th Avenue  
Menahga MN 56464





website: [www.AffinityRealEstate.com](http://www.AffinityRealEstate.com) | email: [info@affinityrealestate.com](mailto:info@affinityrealestate.com) | office: 218-237-3333 | fax: 218-237-3377

**Affinity**  
REAL ESTATE INC

**\$469,900**  
MLS 6591376 Residential  
16168 560th Avenue  
Menahga MN 56464



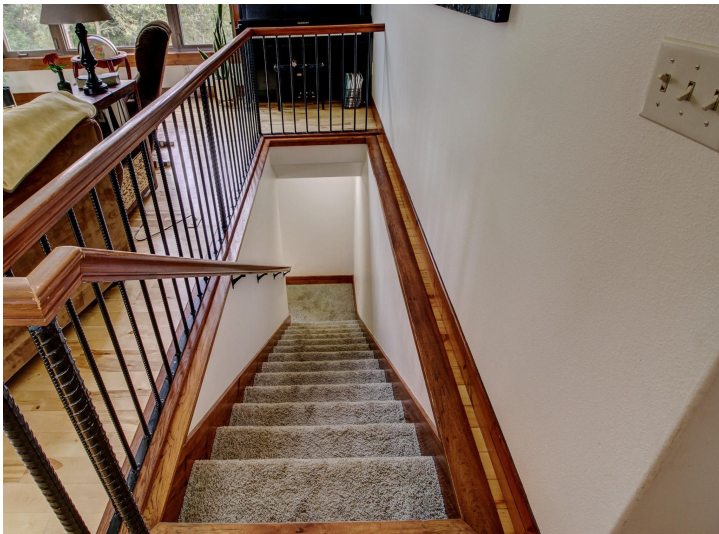


website: [www.AffinityRealEstate.com](http://www.AffinityRealEstate.com) | email: [info@affinityrealestate.com](mailto:info@affinityrealestate.com) | office: 218-237-3333 | fax:218-237-3377

**Affinity**  
REAL ESTATE INC

**\$469,900**  
MLS 6591376 Residential  
16168 560th Avenue  
Menahga MN 56464



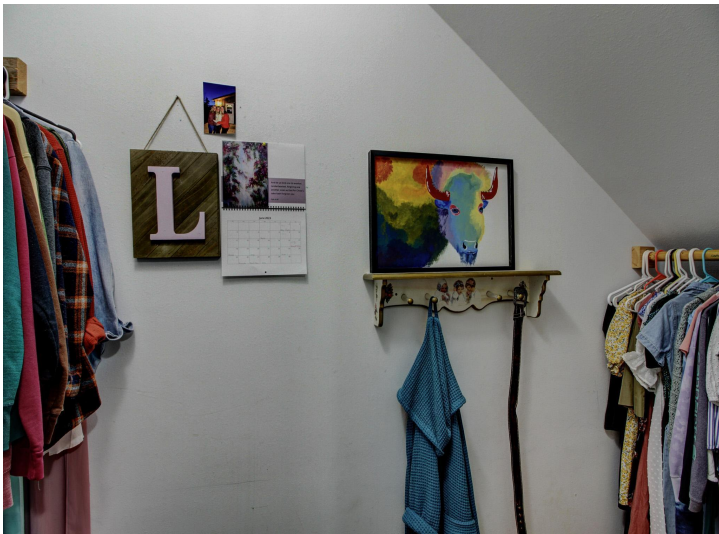


website: [www.AffinityRealEstate.com](http://www.AffinityRealEstate.com) | email: [info@affinityrealestate.com](mailto:info@affinityrealestate.com) | office: 218-237-3333 | fax:218-237-3377

**Affinity**  
REAL ESTATE INC

**\$469,900**  
MLS 6591376 Residential  
16168 560th Avenue  
Menahga MN 56464





website: [www.AffinityRealEstate.com](http://www.AffinityRealEstate.com) | email: [info@affinityrealestate.com](mailto:info@affinityrealestate.com) | office: 218-237-3333 | fax:218-237-3377

**Affinity**  
REAL ESTATE INC

**\$469,900**  
MLS 6591376 Residential  
16168 560th Avenue  
Menahga MN 56464





website: [www.AffinityRealEstate.com](http://www.AffinityRealEstate.com) | email: [info@affinityrealestate.com](mailto:info@affinityrealestate.com) | office: 218-237-3333 | fax:218-237-3377



**\$469,900**  
MLS 6591376 Residential  
16168 560th Avenue  
Menahga MN 56464





website: [www.AffinityRealEstate.com](http://www.AffinityRealEstate.com) | email: [info@affinityrealestate.com](mailto:info@affinityrealestate.com) | office: 218-237-3333 | fax:218-237-3377



**\$469,900**  
MLS 6591376 Residential  
16168 560th Avenue  
Menahga MN 56464





website: [www.AffinityRealEstate.com](http://www.AffinityRealEstate.com) | email: [info@affinityrealestate.com](mailto:info@affinityrealestate.com) | office: 218-237-3333 | fax:218-237-3377



**\$469,900**  
MLS 6591376 Residential  
16168 560th Avenue  
Menahga MN 56464





website: [www.AffinityRealEstate.com](http://www.AffinityRealEstate.com) | email: [info@affinityrealestate.com](mailto:info@affinityrealestate.com) | office: 218-237-3333 | fax:218-237-3377

**Affinity**  
REAL ESTATE INC

**\$469,900**  
MLS 6591376 Residential  
16168 560th Avenue  
Menahga MN 56464





website: [www.AffinityRealEstate.com](http://www.AffinityRealEstate.com) | email: [info@affinityrealestate.com](mailto:info@affinityrealestate.com) | office: 218-237-3333 | fax: 218-237-3377



**\$469,900**  
MLS 6591376 Residential  
16168 560th Avenue  
Menahga MN 56464