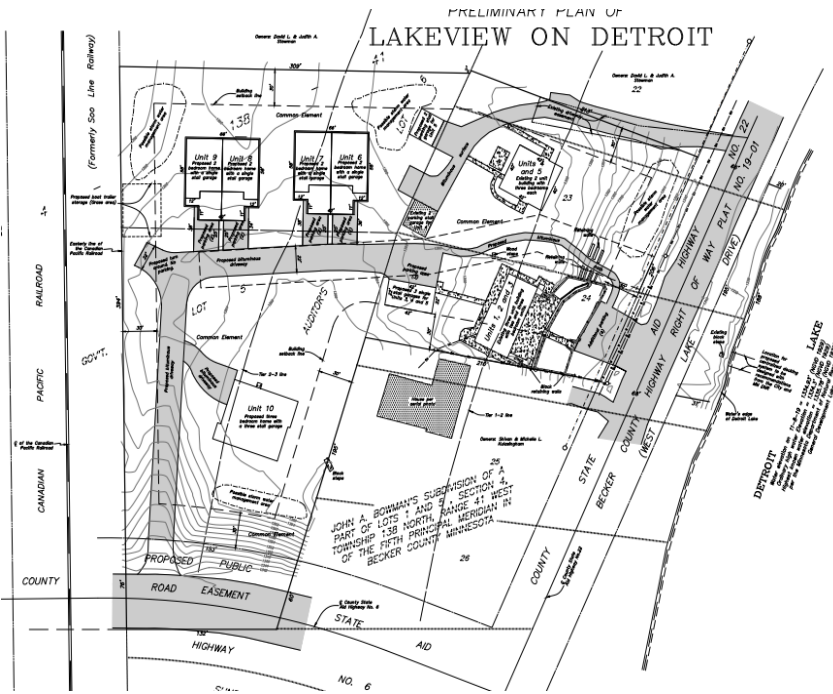




MLS 6591486 Lake Land

**\$179,900**



**Description:**

Prime opportunity to have coveted access to Detroit Lake. Unit #10 in the Lakeview on Detroit Common Interest Community is a single family home lot that allows for the construction of a new home with a 3,109 SF footprint. This lot comes with its own boat slip on Little Detroit Lake and is in close proximity to all the attractions that make Detroit Lakes one of the most sought after lake destinations in the area. Association fees cover all insurance, dock installation and removal, yard maintenance, and snow removal for \$150/month.

**Additional Details:**

Lot Acres	0.07
Lot Dimensions	Irregular
School District	22
Taxes	\$2,136
Taxes with Assessments	\$2,136
Tax Year	2024

**Additional Features:**

**Driving Directions:**

From Highway 59, East on County Road 6. Property is on the left hand side of the road just prior to the stop sign on West Lake Drive



Listed By:  
HomeSmart Adventure Realty

Affinity Real Estate Inc. participates in the Regional Multiple Listing Service of Minnesota, Inc Broker Reciprocity (sm) program, allowing us to display other broker's listings on our website. All properties are subject to prior sale, change or withdrawal.



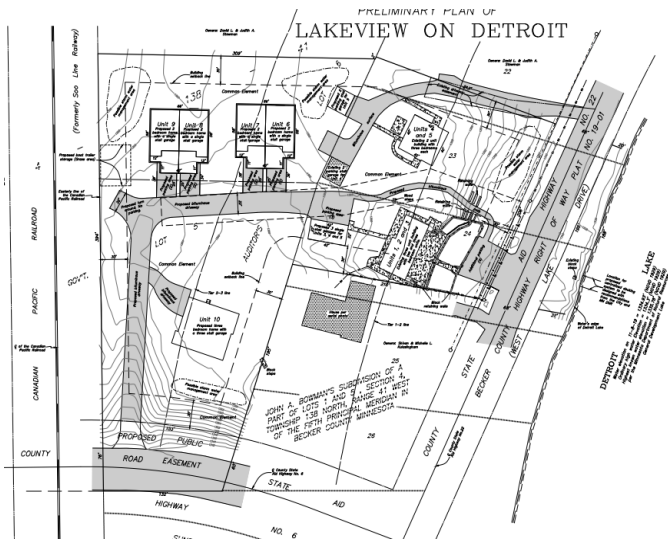
Call Affinity Real Estate

**218-237-3333**

[info@affinityrealestate.com](mailto:info@affinityrealestate.com)



Affinity Real Estate - 600 Park Avenue South - Park Rapids MN 56470



website: [www.AffinityRealEstate.com](http://www.AffinityRealEstate.com) | email: [info@affinityrealestate.com](mailto:info@affinityrealestate.com) | office: 218-237-3333 | fax:218-237-3377



**\$179,900**  
 MLS 6591486 Lake Land  
 1380 County Highway 6  
 Detroit Lakes MN 56501