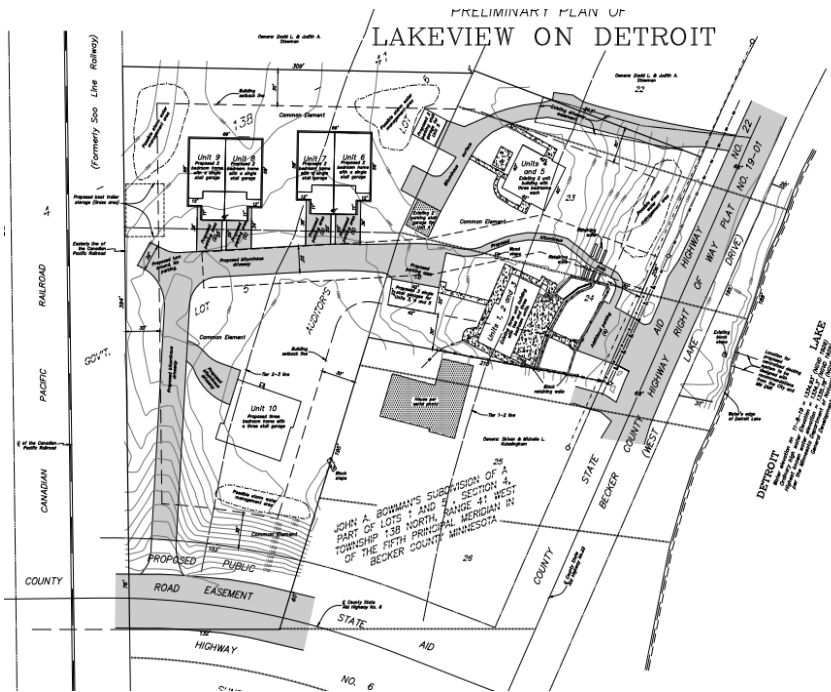




MLS 6592017 Lake Land

\$179,900



1. The project is subject to the provisions of the Minnesota Subdivision Control Act, Chapter 464, Minnesota Statutes.
2. The PUD is not a subdivision and does not require approval by the Minnesota Department of Transportation.
3. The project is not subject to the provisions of the Minnesota Subdivision Control Act, Chapter 464, Minnesota Statutes.
4. Current as shown.
5. Subject to all applicable laws and regulations.
6. The project is not subject to the provisions of the Minnesota Subdivision Control Act, Chapter 464, Minnesota Statutes.
7. No covenants, conditions, or restrictions apply.
8. Any easements are shown on the plan.
9. The project is not subject to the provisions of the Minnesota Subdivision Control Act, Chapter 464, Minnesota Statutes.
10. A plat map is required for this project.
11. The project is not subject to the provisions of the Minnesota Subdivision Control Act, Chapter 464, Minnesota Statutes.
12. The project is not subject to the provisions of the Minnesota Subdivision Control Act, Chapter 464, Minnesota Statutes.
13. See map for details.

Description:

Prime opportunity to have coveted access to Detroit Lake. Units #6 and #7 in the Lakeview on Detroit Common Interest Community allows for the construction of a new duplex with a 4,332 SF footprint. Each lot comes with a boat slip on Little Detroit Lake and is in close proximity to all the attractions that make Detroit Lakes one of the most sought after lake destinations in the area. Association fees cover all insurance, dock installation and removal, yard maintenance, and snow removal for \$150/month. These two units have the ability to be converted to one single family home lot if buyer desires.

Additional Details:

Lot Acres	0.1
Lot Dimensions	Irregular
School District	22
Taxes	\$4,272
Taxes with Assessments	\$4,172
Tax Year	2024

Additional Features:

Driving Directions:

Corner of Co Hwy 6 & West Lake Drive



Listed By:
HomeSmart Adventure Realty

Affinity Real Estate Inc. participates in the Regional Multiple Listing Service of Minnesota, Inc Broker Reciprocity (sm) program, allowing us to display other broker's listings on our website. All properties are subject to prior sale, change or withdrawal.



Call Affinity Real Estate

218-237-3333

info@affinityrealestate.com



Affinity Real Estate - 600 Park Avenue South - Park Rapids MN 56470

