



MLS 6592582 Residential

\$669,900

2,990 sq ft
3 bedrooms
2 baths

58668 State Highway 210
Deer Creek MN 56527

Status: Active

Description:

Here is your chance to own a one-of-a-kind custom-built shouse located on 37.44 acres near Deer Creek. The home is 27x60 and the attached heated shop is 63x60. Shop has 3, 14x14 insulated overhead doors and includes a storm shelter! This amazing property consists of roughly 24 wooded acres with trails throughout and a private pond. The beautiful shouse was constructed in 2007 and offers 3 bedrooms and 2 baths. The living room includes a gorgeous rock, wood burning fireplace. Property does include an additional 40x60 heated shop that has 3, 12x12 overhead doors, a 24x40 3-sided storage shed, a garden shed and a pool house. Enjoy the indoor hot tub or the outside pool overlooking the beautiful landscaping. Wildlife is abundant and the property offers amazing hunting opportunities. Set up a showing today!!!

Additional Details:

Year Built	2007
Lot Acres	37.44
Lot Dimensions	1140x1330x1321x730x200x570
Garage Stalls	6
School District	2155
Taxes	\$2,974
Taxes with Assessments	\$2,974
Tax Year	2024

Additional Features:

Basement: None **Fuel:** Propane **Garage:** 6 **Heat:** Boiler, Forced Air, Fireplace(s), Radiant Floor, Wood Stove **Sewer:** Private Sewer, Tank with Drainage Field **Water:** Drilled, Private **Air Conditioning:** None

Driving Directions:

58668 State Highway 210, Deer Creek



Listed By:
Coldwell Banker Preferred Partners

Affinity Real Estate Inc. participates in the Regional Multiple Listing Service of Minnesota, Inc Broker Reciprocity (sm) program, allowing us to display other broker's listings on our website. All properties are subject to prior sale, change or withdrawal.



Call Affinity Real Estate

218-237-3333

info@affinityrealestate.com



Affinity Real Estate - 600 Park Avenue South - Park Rapids MN 56470



website: www.AffinityRealEstate.com | email: info@affinityrealestate.com | office: 218-237-3333 | fax:218-237-3377



\$669,900
MLS 6592582 Residential
58668 State Highway 210
Deer Creek MN 56527



website: www.AffinityRealEstate.com | email: info@affinityrealestate.com | office: 218-237-3333 | fax: 218-237-3377

Affinity
REAL ESTATE INC

\$669,900
MLS 6592582 Residential
58668 State Highway 210
Deer Creek MN 56527



website: www.AffinityRealEstate.com | email: info@affinityrealestate.com | office: 218-237-3333 | fax: 218-237-3377

Affinity
REAL ESTATE INC

\$669,900
MLS 6592582 Residential
58668 State Highway 210
Deer Creek MN 56527



website: www.AffinityRealEstate.com | email: info@affinityrealestate.com | office: 218-237-3333 | fax:218-237-3377

Affinity
REAL ESTATE INC

\$669,900
MLS 6592582 Residential
58668 State Highway 210
Deer Creek MN 56527



website: www.AffinityRealEstate.com | email: info@affinityrealestate.com | office: 218-237-3333 | fax:218-237-3377



\$669,900
MLS 6592582 Residential
58668 State Highway 210
Deer Creek MN 56527



website: www.AffinityRealEstate.com | email: info@affinityrealestate.com | office: 218-237-3333 | fax:218-237-3377



\$669,900
MLS 6592582 Residential
58668 State Highway 210
Deer Creek MN 56527



website: www.AffinityRealEstate.com | email: info@affinityrealestate.com | office: 218-237-3333 | fax:218-237-3377



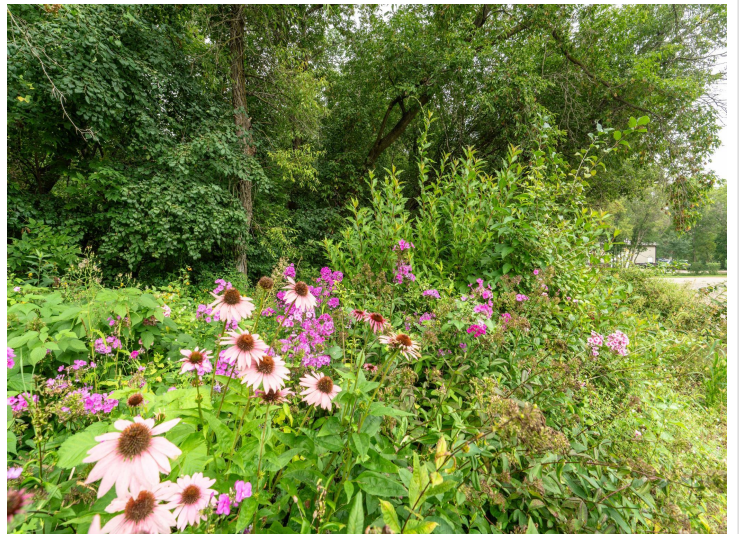
\$669,900
MLS 6592582 Residential
58668 State Highway 210
Deer Creek MN 56527



website: www.AffinityRealEstate.com | email: info@affinityrealestate.com | office: 218-237-3333 | fax:218-237-3377



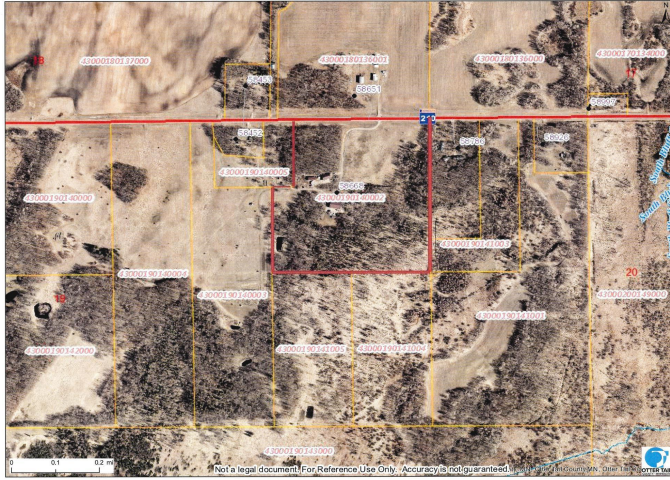
\$669,900
MLS 6592582 Residential
58668 State Highway 210
Deer Creek MN 56527



website: www.AffinityRealEstate.com | email: info@affinityrealestate.com | office: 218-237-3333 | fax:218-237-3377



\$669,900
MLS 6592582 Residential
58668 State Highway 210
Deer Creek MN 56527



website: www.AffinityRealEstate.com | email: info@affinityrealestate.com | office: 218-237-3333 | fax:218-237-3377

The logo for Affinity Real Estate Inc, featuring the word "Affinity" in a large, stylized font with a swoosh underneath, and "REAL ESTATE INC" in a smaller font below it.

\$669,900

MLS 6592582 Residential
58668 State Highway 210
Deer Creek MN 56527



website: www.AffinityRealEstate.com | email: info@affinityrealestate.com | office: 218-237-3333 | fax: 218-237-3377

Affinity
REAL ESTATE INC

\$669,900
MLS 6592582 Residential
58668 State Highway 210
Deer Creek MN 56527



website: www.AffinityRealEstate.com | email: info@affinityrealestate.com | office: 218-237-3333 | fax: 218-237-3377

Affinity
REAL ESTATE INC

\$669,900
MLS 6592582 Residential
58668 State Highway 210
Deer Creek MN 56527



website: www.AffinityRealEstate.com | email: info@affinityrealestate.com | office: 218-237-3333 | fax:218-237-3377



\$669,900
MLS 6592582 Residential
58668 State Highway 210
Deer Creek MN 56527



website: www.AffinityRealEstate.com | email: info@affinityrealestate.com | office: 218-237-3333 | fax:218-237-3377

Affinity
REAL ESTATE INC

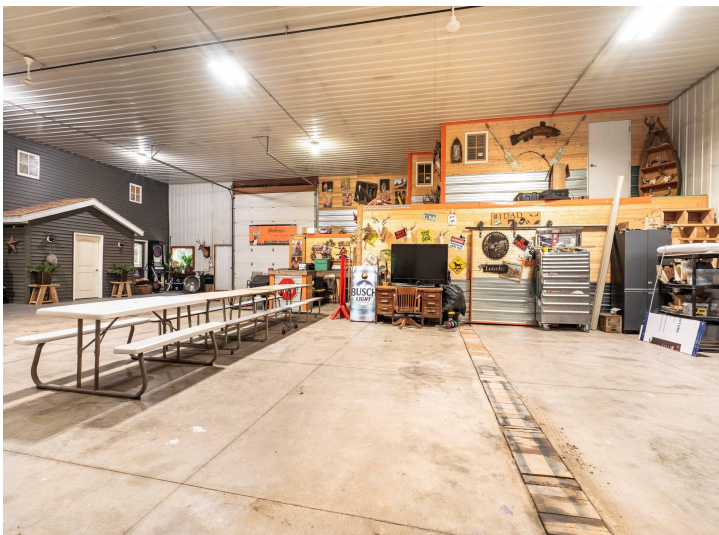
\$669,900
MLS 6592582 Residential
58668 State Highway 210
Deer Creek MN 56527



website: www.AffinityRealEstate.com | email: info@affinityrealestate.com | office: 218-237-3333 | fax:218-237-3377



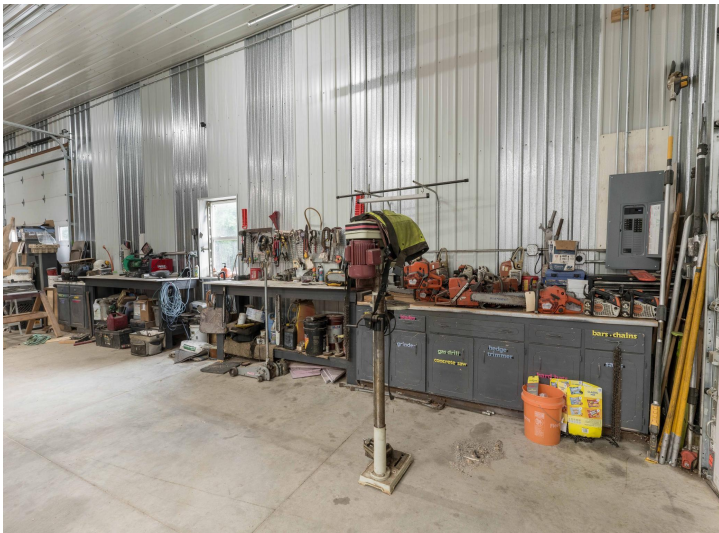
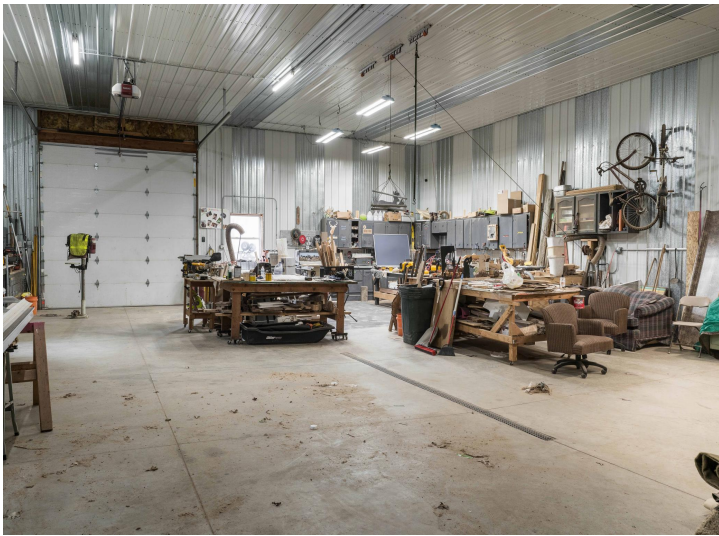
\$669,900
MLS 6592582 Residential
58668 State Highway 210
Deer Creek MN 56527



website: www.AffinityRealEstate.com | email: info@affinityrealestate.com | office: 218-237-3333 | fax:218-237-3377

Affinity
REAL ESTATE INC

\$669,900
MLS 6592582 Residential
58668 State Highway 210
Deer Creek MN 56527



website: www.AffinityRealEstate.com | email: info@affinityrealestate.com | office: 218-237-3333 | fax:218-237-3377

Affinity
REAL ESTATE INC

\$669,900
MLS 6592582 Residential
58668 State Highway 210
Deer Creek MN 56527



website: www.AffinityRealEstate.com | email: info@affinityrealestate.com | office: 218-237-3333 | fax:218-237-3377



\$669,900

MLS 6592582 Residential
58668 State Highway 210
Deer Creek MN 56527