



MLS 6592744 Lake Home

**\$624,900**

2,416 sq ft  
3 bedrooms  
3 baths

4524 Birchmont Drive  
Bemidji MN 56601

Waterfront: Bemidji (main lake)

Status: Active

**Description:**

Enjoy stunning views of Lake Bemidji from this beautiful 3 bedroom, 3 bathroom townhome at Royal Bay Estates, an exclusive community that offers Northern Minnesota sunrises, where you can experience the best of lakeside living with direct access to the lake, lakeside dining, excellent fishing, and endless water activities. With over 2400 sq ft of a level and a half of living space, the spacious main floor features a primary bedroom and laundry. Amenities include a gas fireplace, HDX countertops, and a double stall attached garage. The upper level includes a lofted second living space with breathtaking views, plus two additional bedrooms and a full bathroom. A RARE BONUS IS THE ADDITIONAL 12X26 DETACHED GARAGE, a unique feature not found in most townhomes in Royal Bay Estates. The expansive patio with upgraded privacy fence offers a serene spot to take in the lake views.

**Additional Details:**


Year Built	1999
Lot Acres	0.09
Lot Dimensions	110x36
Garage Stalls	3
School District	31
Taxes	\$8,258
Taxes with Assessments	\$8,258
Tax Year	2024

**Additional Features:**

**Basement:** None **Fuel:** Natural Gas **Garage:** 3 **Heat:** Forced Air **Sewer:** City Sewer/Connected **Water:** City Water/Connected **Air Conditioning:** Central Air

**Driving Directions:**

N on Birchmont to right into Royal Bay stay right in the driveway, condo is 2nd from north end #11

 Listed By:  
218 Real Estate

Affinity Real Estate Inc. participates in the Regional Multiple Listing Service of Minnesota, Inc Broker Reciprocity (sm) program, allowing us to display other broker's listings on our website. All properties are subject to prior sale, change or withdrawal.

 **Call Affinity Real Estate**  
**218-237-3333**  
**info@affinityrealestate.com**

Affinity Real Estate - 600 Park Avenue South - Park Rapids MN 56470



website: [www.AffinityRealEstate.com](http://www.AffinityRealEstate.com) | email: [info@affinityrealestate.com](mailto:info@affinityrealestate.com) | office: 218-237-3333 | fax:218-237-3377

**Affinity**  
REAL ESTATE INC

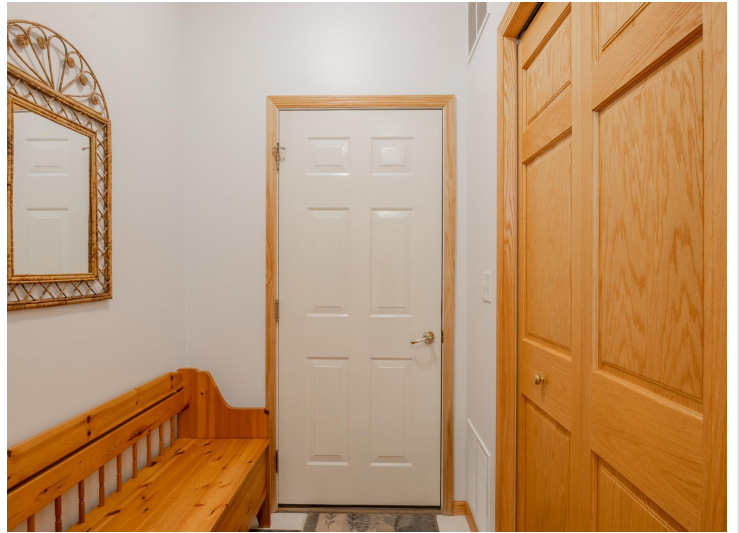
**\$624,900**  
MLS 6592744 Lake Home  
4524 Birchmont Drive  
Bemidji MN 56601



website: [www.AffinityRealEstate.com](http://www.AffinityRealEstate.com) | email: [info@affinityrealestate.com](mailto:info@affinityrealestate.com) | office: 218-237-3333 | fax:218-237-3377

**Affinity**  
REAL ESTATE INC

**\$624,900**  
MLS 6592744 Lake Home  
4524 Birchmont Drive  
Bemidji MN 56601



website: [www.AffinityRealEstate.com](http://www.AffinityRealEstate.com) | email: [info@affinityrealestate.com](mailto:info@affinityrealestate.com) | office: 218-237-3333 | fax:218-237-3377



**\$624,900**  
MLS 6592744 Lake Home  
4524 Birchmont Drive  
Bemidji MN 56601



website: [www.AffinityRealEstate.com](http://www.AffinityRealEstate.com) | email: [info@affinityrealestate.com](mailto:info@affinityrealestate.com) | office: 218-237-3333 | fax: 218-237-3377

**Affinity**  
REAL ESTATE INC

**\$624,900**  
MLS 6592744 Lake Home  
4524 Birchmont Drive  
Bemidji MN 56601



website: [www.AffinityRealEstate.com](http://www.AffinityRealEstate.com) | email: [info@affinityrealestate.com](mailto:info@affinityrealestate.com) | office: 218-237-3333 | fax:218-237-3377

**Affinity**  
REAL ESTATE INC

**\$624,900**  
MLS 6592744 Lake Home  
4524 Birchmont Drive  
Bemidji MN 56601



website: [www.AffinityRealEstate.com](http://www.AffinityRealEstate.com) | email: [info@affinityrealestate.com](mailto:info@affinityrealestate.com) | office: 218-237-3333 | fax:218-237-3377



**\$624,900**  
MLS 6592744 Lake Home  
4524 Birchmont Drive  
Bemidji MN 56601



website: [www.AffinityRealEstate.com](http://www.AffinityRealEstate.com) | email: [info@affinityrealestate.com](mailto:info@affinityrealestate.com) | office: 218-237-3333 | fax:218-237-3377

**Affinity**  
REAL ESTATE INC

**\$624,900**  
MLS 6592744 Lake Home  
4524 Birchmont Drive  
Bemidji MN 56601





website: [www.AffinityRealEstate.com](http://www.AffinityRealEstate.com) | email: [info@affinityrealestate.com](mailto:info@affinityrealestate.com) | office: 218-237-3333 | fax:218-237-3377



**\$624,900**  
MLS 6592744 Lake Home  
4524 Birchmont Drive  
Bemidji MN 56601



website: [www.AffinityRealEstate.com](http://www.AffinityRealEstate.com) | email: [info@affinityrealestate.com](mailto:info@affinityrealestate.com) | office: 218-237-3333 | fax:218-237-3377



**\$624,900**  
MLS 6592744 Lake Home  
4524 Birchmont Drive  
Bemidji MN 56601



website: [www.AffinityRealEstate.com](http://www.AffinityRealEstate.com) | email: [info@affinityrealestate.com](mailto:info@affinityrealestate.com) | office: 218-237-3333 | fax:218-237-3377

**Affinity**  
REAL ESTATE INC

**\$624,900**  
MLS 6592744 Lake Home  
4524 Birchmont Drive  
Bemidji MN 56601



website: [www.AffinityRealEstate.com](http://www.AffinityRealEstate.com) | email: [info@affinityrealestate.com](mailto:info@affinityrealestate.com) | office: 218-237-3333 | fax: 218-237-3377

**Affinity**  
REAL ESTATE INC

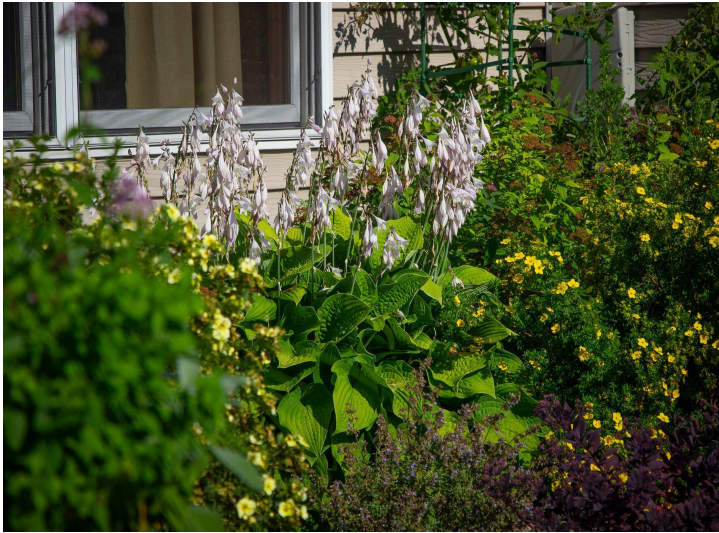
**\$624,900**  
MLS 6592744 Lake Home  
4524 Birchmont Drive  
Bemidji MN 56601



website: [www.AffinityRealEstate.com](http://www.AffinityRealEstate.com) | email: [info@affinityrealestate.com](mailto:info@affinityrealestate.com) | office: 218-237-3333 | fax: 218-237-3377

**Affinity**  
REAL ESTATE INC

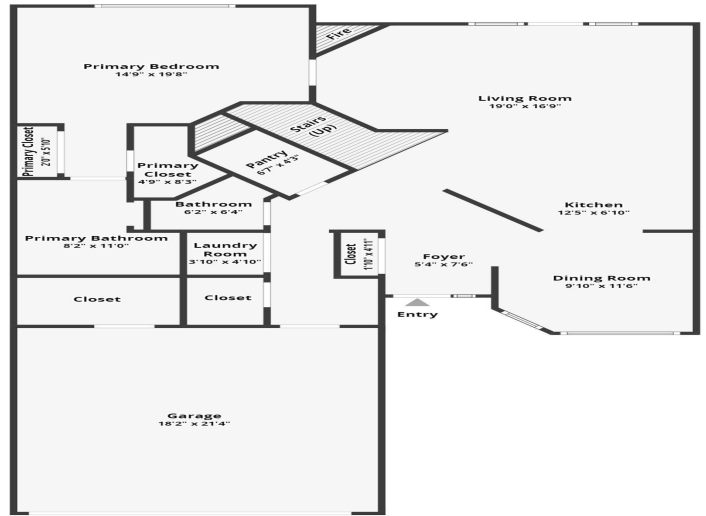
**\$624,900**  
MLS 6592744 Lake Home  
4524 Birchmont Drive  
Bemidji MN 56601



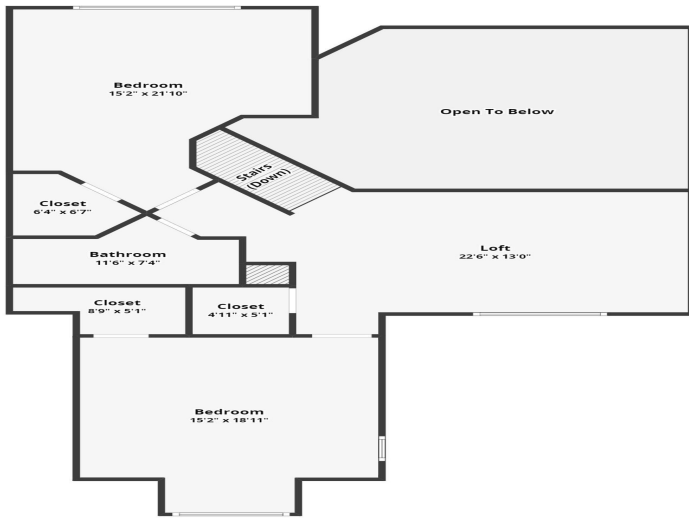
website: [www.AffinityRealEstate.com](http://www.AffinityRealEstate.com) | email: [info@affinityrealestate.com](mailto:info@affinityrealestate.com) | office: 218-237-3333 | fax: 218-237-3377

**Affinity**  
REAL ESTATE INC

**\$624,900**  
MLS 6592744 Lake Home  
4524 Birchmont Drive  
Bemidji MN 56601



All dimensions are approximate and subject to independent verification.



All dimensions are approximate and subject to independent verification.



website: [www.AffinityRealEstate.com](http://www.AffinityRealEstate.com) | email: [info@affinityrealestate.com](mailto:info@affinityrealestate.com) | office: 218-237-3333 | fax: 218-237-3377



**\$624,900**  
 MLS 6592744 Lake Home  
 4524 Birchmont Drive  
 Bemidji MN 56601



website: [www.AffinityRealEstate.com](http://www.AffinityRealEstate.com) | email: [info@affinityrealestate.com](mailto:info@affinityrealestate.com) | office: 218-237-3333 | fax:218-237-3377



**\$624,900**  
MLS 6592744 Lake Home  
4524 Birchmont Drive  
Bemidji MN 56601