



MLS 6593415 Commercial

\$12

315 5th Street
Bemidji MN 56601

Status: Active

Description:

Turn-key office space available in downtown Bemidji, just west of Lake Bemidji. This professional office building is centrally located near many major amenities and area businesses. Enjoy 8 private offices, 1 conference room, 2 restrooms, reception area, and storage area, with a 5th Street front entrance. Prime opportunity for an office-service business seeking affordable space in a great location.

Additional Details:

Year Built	1973
Lot Acres	0.1
Lot Dimensions	140x160
School District	31
Taxes	(unreported)
Taxes with Assessments	(unreported)
Tax Year	2024

Additional Features:

Fuel: Natural Gas **Heat:** Forced Air **Sewer:** City Sewer/Connected **Water:** City Water/Connected **Air Conditioning:** Central Air

Driving Directions:

Property is 3 blocks west of the intersection of Bemidji Ave N and 5th Street NW, on the north side of 5th Street NW



Listed By:
Close-Converse Commercial Prop

Affinity Real Estate Inc. participates in the Regional Multiple Listing Service of Minnesota, Inc Broker Reciprocity (sm) program, allowing us to display other broker's listings on our website. All properties are subject to prior sale, change or withdrawal.



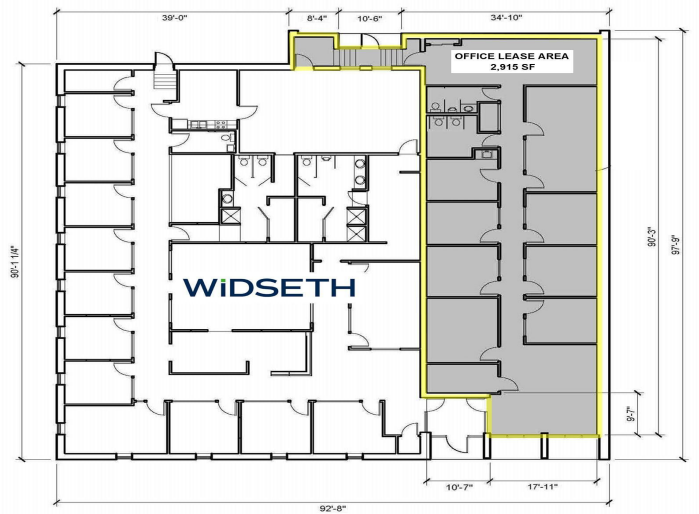
Call Affinity Real Estate

218-237-3333

info@affinityrealestate.com



Affinity Real Estate - 600 Park Avenue South - Park Rapids MN 56470



website: www.AffinityRealEstate.com | email: info@affinityrealestate.com | office: 218-237-3333 | fax: 218-237-3377



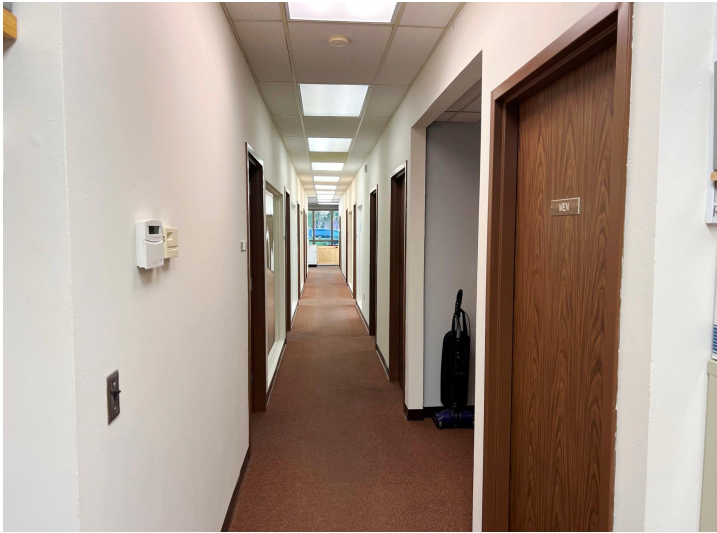
\$12
 MLS 6593415 Commercial
 315 5th Street
 Bemidji MN 56601



website: www.AffinityRealEstate.com | email: info@affinityrealestate.com | office: 218-237-3333 | fax: 218-237-3377

Affinity
REAL ESTATE INC

\$12
MLS 6593415 Commercial
315 5th Street
Bemidji MN 56601



website: www.AffinityRealEstate.com | email: info@affinityrealestate.com | office: 218-237-3333 | fax: 218-237-3377



\$12
MLS 6593415 Commercial
315 5th Street
Bemidji MN 56601