



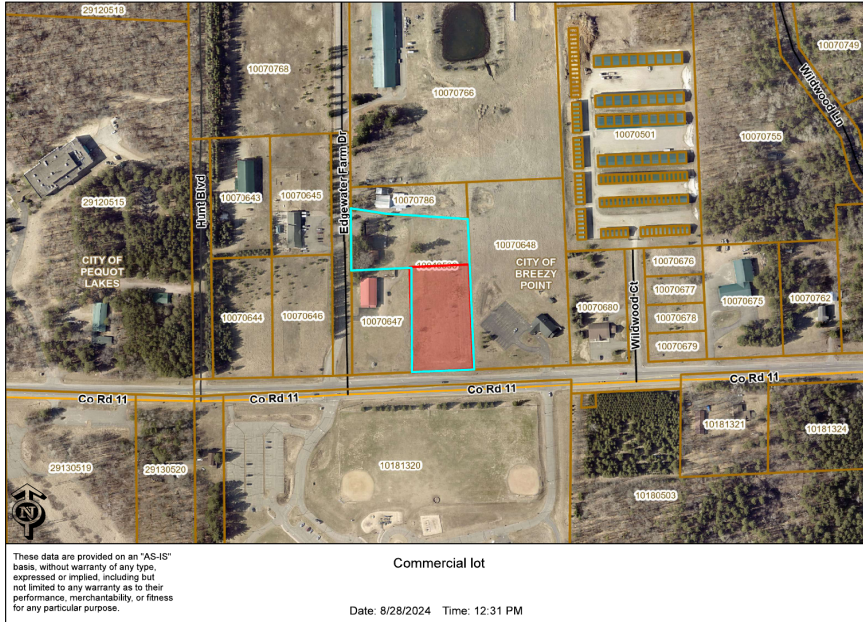
MLS 6593462 Land

**\$195,000**

1.8 Acres  
Raw Land

TBD County Road 11  
Pequot Lakes MN 56472

Status: Active



**Description:**

(description unavailable)

**Additional Details:**

Lot Acres	1.8
Lot Dimensions	212 x 366
School District	186
Taxes	\$2,266
Taxes with Assessments	\$2,316
Tax Year	2024

**Additional Features:**

**Driving Directions:**

Located on Cty Rd 11 across from Eagle View Elementary school between Breezy Point and Pequot Lakes.



Listed By:  
RE/MAX Results - Crosslake

Affinity Real Estate Inc. participates in the Regional Multiple Listing Service of Minnesota, Inc Broker Reciprocity (sm) program, allowing us to display other broker's listings on our website. All properties are subject to prior sale, change or withdrawal.



Call Affinity Real Estate

**218-237-3333**

[info@affinityrealestate.com](mailto:info@affinityrealestate.com)



Affinity Real Estate - 600 Park Avenue South - Park Rapids MN 56470



These data are provided on an "AS-IS" basis, without warranty of any type expressed or implied, including but not limited to any warranty as to their performance, merchantability, or fitness for any particular purpose.

Commercial lot

Date: 8/28/2024 Time: 12:31 PM



website: [www.AffinityRealEstate.com](http://www.AffinityRealEstate.com) | email: [info@affinityrealestate.com](mailto:info@affinityrealestate.com) | office: 218-237-3333 | fax:218-237-3377



**\$195,000**  
 MLS 6593462 Land  
 TBD County Road 11  
 Pequot Lakes MN 56472



website: [www.AffinityRealEstate.com](http://www.AffinityRealEstate.com) | email: [info@affinityrealestate.com](mailto:info@affinityrealestate.com) | office: 218-237-3333 | fax:218-237-3377



**\$195,000**  
MLS 6593462 Land  
TBD County Road 11  
Pequot Lakes MN 56472