



MLS 6594085 Residential

\$547,705

1,780 sq ft
3 bedrooms
2 baths

3828 Sanctuary Path
Brainerd MN 56401

Status: Active

Description:

****Model home located at 3828 Sanctuary Path open Thursdays from 11-1****

If you're looking for maintenance free living in a great location, look no further. The Homes at Sanctuary Ridge is the Brainerd Lakes Area's newest neighborhood, and is officially under construction. Nestled in the forest along the banks of the Gull River, The Homes at Sanctuary Ridge will feature 18 maintenance free townhomes, and 15 additional residential lots, many with Gull River views. This upgraded version of the Cedar is a 3BR/2BA single level home with an attached 3 car garage. Other upgrades include a gas fireplace in the living room with built in bookcases, tile shower in master bathroom, and a floor drain in the garage. If you're looking for something bigger, there are several options to upgrade, including a full basement. The association takes care of lawn and snow, leaving you free to enjoy all that the Brainerd Lakes Area has to offer. Come take a look today and secure your spot in Sanctuary Ridge!

Additional Details:

Year Built	2024
Lot Acres	0.11
Lot Dimensions	70x70
Garage Stalls	3
School District	181
Taxes	\$290
Taxes with Assessments	\$290
Tax Year	2025

Additional Features:

Basement: None **Fuel:** Natural Gas **Garage:** 3 **Heat:** Forced Air **Sewer:** Private Sewer, Shared Septic, Tank with Drainage Field **Water:** Submersible - 4 Inch, Drilled, Private, Well **Air Conditioning:** Central Air

Driving Directions:

From Baxter, west on CR 77, North on Sanctuary Way, stay left to Sanctuary Lane



Listed By:
Positive Realty

Affinity Real Estate Inc. participates in the Regional Multiple Listing Service of Minnesota, Inc Broker Reciprocity (sm) program, allowing us to display other broker's listings on our website. All properties are subject to prior sale, change or withdrawal.



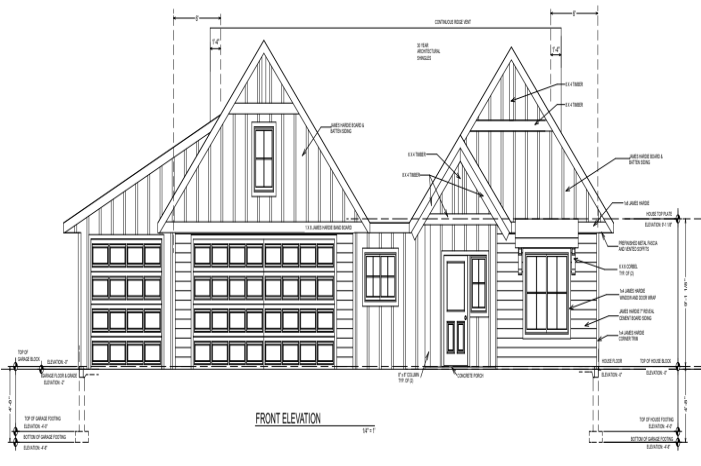
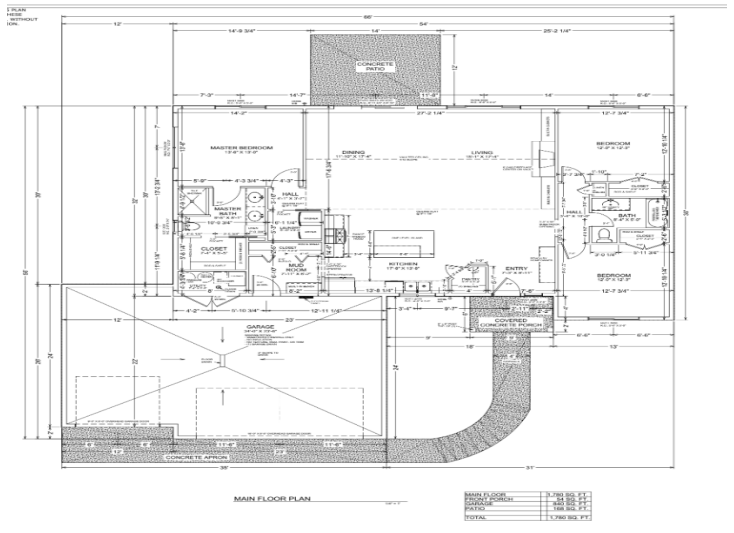
Call Affinity Real Estate

218-237-3333

info@affinityrealestate.com



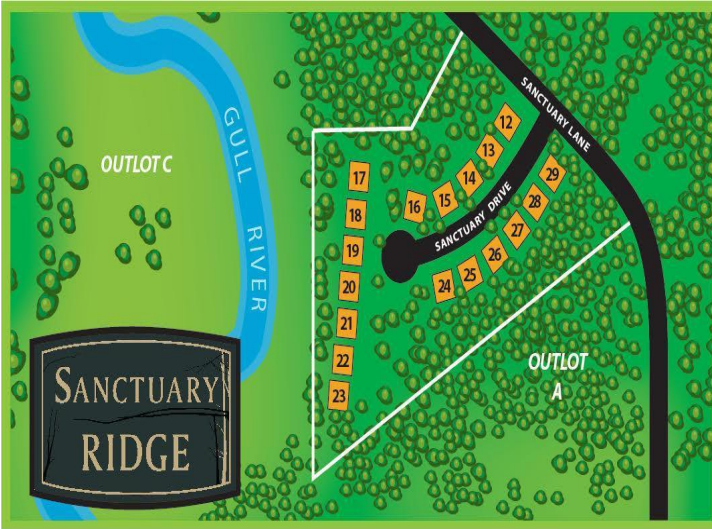
Affinity Real Estate - 600 Park Avenue South - Park Rapids MN 56470



website: www.AffinityRealEstate.com | email: info@affinityrealestate.com | office: 218-237-3333 | fax: 218-237-3377



\$547,705
 MLS 6594085 Residential
 3828 Sanctuary Path
 Brainerd MN 56401



website: www.AffinityRealEstate.com | email: info@affinityrealestate.com | office: 218-237-3333 | fax: 218-237-3377

Affinity
REAL ESTATE INC

\$547,705
MLS 6594085 Residential
3828 Sanctuary Path
Brainerd MN 56401



website: www.AffinityRealEstate.com | email: info@affinityrealestate.com | office: 218-237-3333 | fax: 218-237-3377



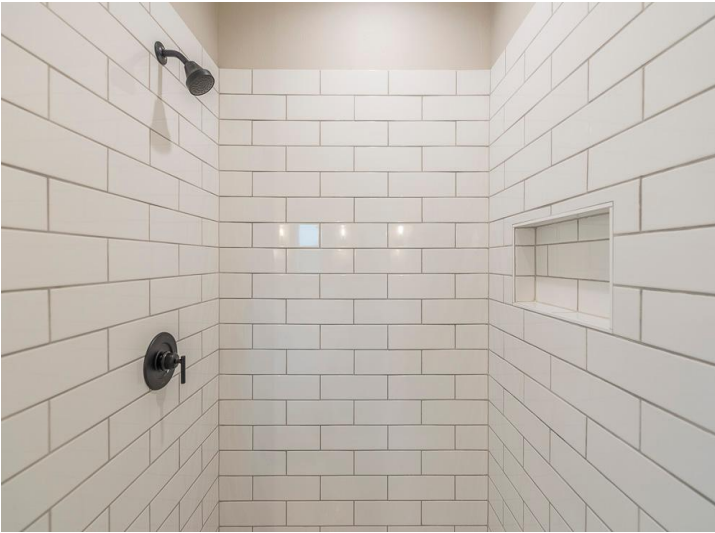
\$547,705
 MLS 6594085 Residential
 3828 Sanctuary Path
 Brainerd MN 56401



website: www.AffinityRealEstate.com | email: info@affinityrealestate.com | office: 218-237-3333 | fax: 218-237-3377



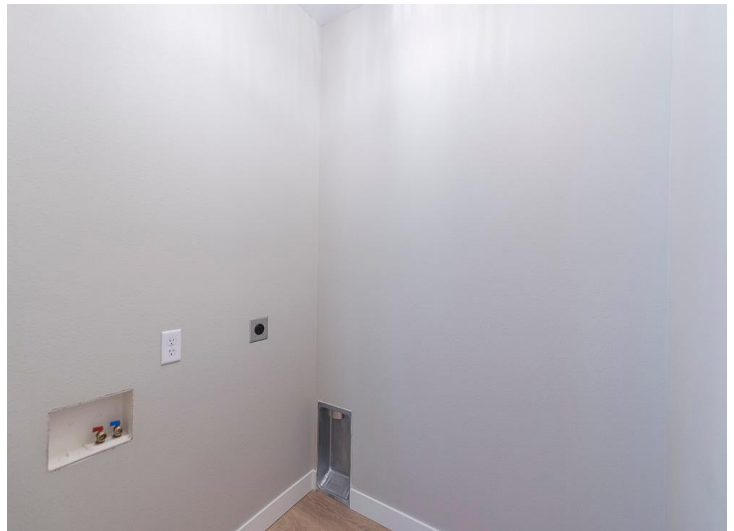
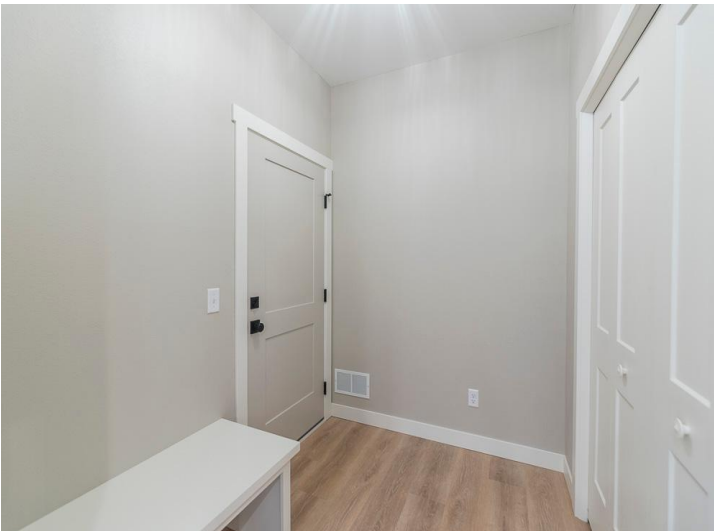
\$547,705
MLS 6594085 Residential
3828 Sanctuary Path
Brainerd MN 56401



website: www.AffinityRealEstate.com | email: info@affinityrealestate.com | office: 218-237-3333 | fax: 218-237-3377



\$547,705
 MLS 6594085 Residential
 3828 Sanctuary Path
 Brainerd MN 56401



website: www.AffinityRealEstate.com | email: info@affinityrealestate.com | office: 218-237-3333 | fax: 218-237-3377



\$547,705
 MLS 6594085 Residential
 3828 Sanctuary Path
 Brainerd MN 56401

website: www.AffinityRealEstate.com | email: info@affinityrealestate.com | office: 218-237-3333 | fax:218-237-3377



\$547,705

MLS 6594085 Residential
3828 Sanctuary Path
Brainerd MN 56401

website: www.AffinityRealEstate.com | email: info@affinityrealestate.com | office: 218-237-3333 | fax:218-237-3377



\$547,705

MLS 6594085 Residential
3828 Sanctuary Path
Brainerd MN 56401