



MLS 6594812 Residential

\$255,000

1,620 sq ft
3 bedrooms
2 baths

901 Sunrise Circle
Park Rapids MN 56470

Status: Active

Description:

This move-in ready 3 bedroom, 2 bath city home features all living facilities on one level and is situated on a nice city lot at the end of a cul-de-sac, close to shopping, restaurants, and the hospital! Whether you are looking to downsize or just starting out, this could be the home for you! Seller has painted the interior and put up privacy fence in the back yard.

Additional Details:

Year Built	2008
Lot Acres	0.29
Lot Dimensions	Irr.
Garage Stalls	3
School District	309
Taxes	\$2,562
Taxes with Assessments	\$2,772
Tax Year	2024

Additional Features:

Basement: None **Fuel:** Electric **Garage:** 3 **Heat:** Radiant Floor **Sewer:** City Sewer/Connected **Water:** City Water/Connected **Air Conditioning:** Central Air, Wall Unit(s)

Driving Directions:

In Park Rapids, South on Pleasant Ave to 11th St. Right on 11th St. to a left on Sunrise Circle to end of cul-de-sac and #901.



Listed By:
Coldwell Banker Crown Realtors

Affinity Real Estate Inc. participates in the Regional Multiple Listing Service of Minnesota, Inc Broker Reciprocity (sm) program, allowing us to display other broker's listings on our website. All properties are subject to prior sale, change or withdrawal.



Call Affinity Real Estate

218-237-3333

info@affinityrealestate.com



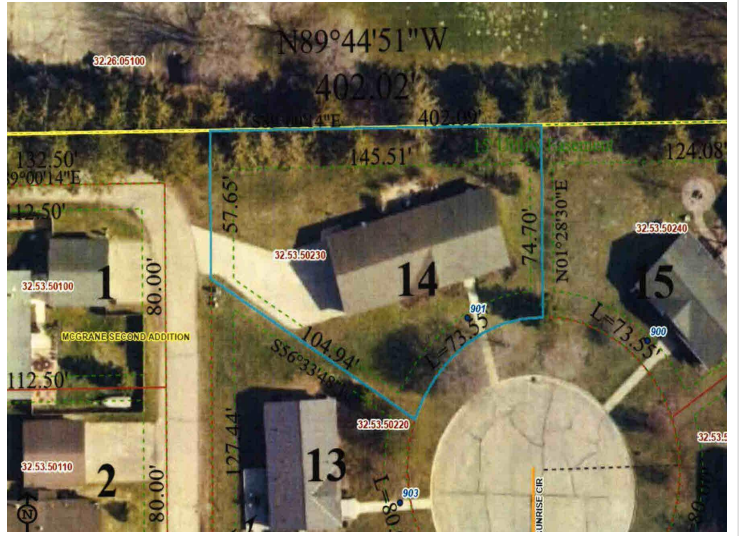
Affinity Real Estate - 600 Park Avenue South - Park Rapids MN 56470



website: www.AffinityRealEstate.com | email: info@affinityrealestate.com | office: 218-237-3333 | fax:218-237-3377



\$255,000
MLS 6594812 Residential
901 Sunrise Circle
Park Rapids MN 56470



website: www.AffinityRealEstate.com | email: info@affinityrealestate.com | office: 218-237-3333 | fax:218-237-3377



\$255,000
MLS 6594812 Residential
901 Sunrise Circle
Park Rapids MN 56470

