



MLS 6595443 Residential

\$275,000

1,322 sq ft
2 bedrooms
2 baths

5030 County Road 1
Pequot Lakes MN 56472

Status: Pending

Description:

Escape to your own slice of paradise with this delightful two-bedroom, one-bath home nestled on 20 sprawling acres. Perfect for those seeking tranquility and space, this property offers endless possibilities for outdoor enthusiasts, hobby farmers, or anyone looking to enjoy the beauty of nature.

Looking to store equipment, boats, toys or more use the 30x45 pole shed to store it all!

Enjoy the peace and quiet of country living while still being within reach of local amenities. This property offers the perfect balance of rural charm and convenience.

Additional Details:

Year Built	1975
Lot Acres	19.88
Lot Dimensions	663x1302x663x1302
Garage Stalls	2
School District	2174
Taxes	\$66
Taxes with Assessments	\$66
Tax Year	2024

Additional Features:

Basement: Partially Finished, Walkout **Fuel:** Propane, Wood **Garage:** 2 **Heat:** Boiler, Forced Air, Fireplace(s) **Sewer:** Tank with Drainage Field
Water: Sand Point, Well **Air Conditioning:** None

Driving Directions:

CR 17 to CR 1 home on right



Listed By:
Positive Realty

Affinity Real Estate Inc. participates in the Regional Multiple Listing Service of Minnesota, Inc Broker Reciprocity (sm) program, allowing us to display other broker's listings on our website. All properties are subject to prior sale, change or withdrawal.



Call Affinity Real Estate

218-237-3333

info@affinityrealestate.com



Affinity Real Estate - 600 Park Avenue South - Park Rapids MN 56470



website: www.AffinityRealEstate.com | email: info@affinityrealestate.com | office: 218-237-3333 | fax: 218-237-3377

Affinity
REAL ESTATE INC

\$275,000
MLS 6595443 Residential
5030 County Road 1
Pequot Lakes MN 56472



website: www.AffinityRealEstate.com | email: info@affinityrealestate.com | office: 218-237-3333 | fax: 218-237-3377

Affinity
REAL ESTATE INC

\$275,000
MLS 6595443 Residential
5030 County Road 1
Pequot Lakes MN 56472



website: www.AffinityRealEstate.com | email: info@affinityrealestate.com | office: 218-237-3333 | fax: 218-237-3377



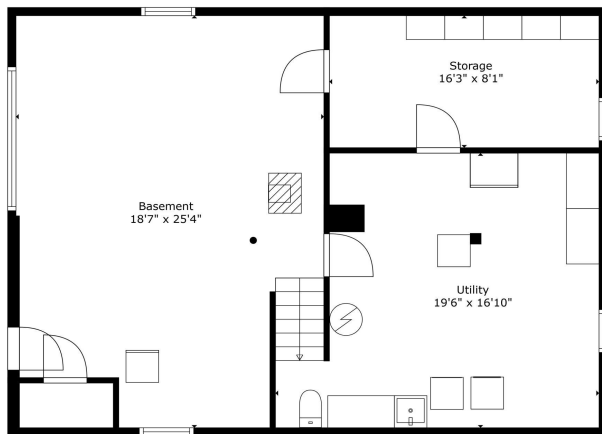
\$275,000
 MLS 6595443 Residential
 5030 County Road 1
 Pequot Lakes MN 56472



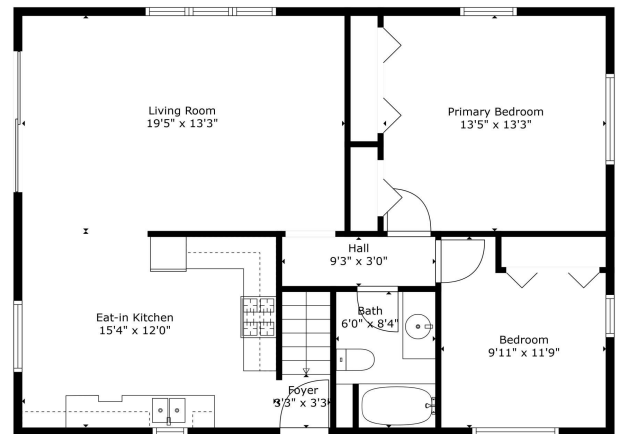
website: www.AffinityRealEstate.com | email: info@affinityrealestate.com | office: 218-237-3333 | fax: 218-237-3377



\$275,000
 MLS 6595443 Residential
 5030 County Road 1
 Pequot Lakes MN 56472



TOTAL: 910 sq. ft.
BELOW GROUND: 19 sq. ft., FLOOR 2: 891 sq. ft.
EXCLUDED AREAS: STORAGE: 140 sq. ft., UTILITY: 203 sq. ft., BASEMENT: 435 sq. ft.
Measurements Are Estimated And Are Not a Replacement For a Licensed Surveyor.

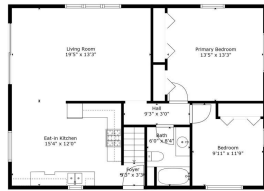


TOTAL: 910 sq. ft.
BELOW GROUND: 19 sq. ft., FLOOR 2: 891 sq. ft.
EXCLUDED AREAS: STORAGE: 140 sq. ft., UTILITY: 203 sq. ft., BASEMENT: 435 sq. ft.
Measurements Are Estimated And Are Not a Replacement For a Licensed Surveyor.

website: www.AffinityRealEstate.com | email: info@affinityrealestate.com | office: 218-237-3333 | fax: 218-237-3377

Affinity
REAL ESTATE INC

\$275,000
MLS 6595443 Residential
5030 County Road 1
Pequot Lakes MN 56472



Floor 2



Floor 1

TOTAL: 910 sq. ft.
 BELOW GROUND: 19 sq. ft. FLOOR 2: 891 sq. ft.
 EXCLUDED AREAS: STORAGE: 140 sq. ft. UTILITY: 293 sq. ft. BASEMENT: 435 sq. ft.
 Measurements Are Estimated And Are Not a Replacement For a Licensed Surveyor.

website: www.AffinityRealEstate.com | email: info@affinityrealestate.com | office: 218-237-3333 | fax: 218-237-3377



\$275,000
 MLS 6595443 Residential
 5030 County Road 1
 Pequot Lakes MN 56472