



MLS 6595491 Lake Land

\$169,999

Description:

Discover the perfect canvas for your dream home on this breathtaking 4.26 acre Mississippi riverfront property. Located in the heart of Baxter. This location is a paradise for outdoor enthusiasts. The property is partially cleared for an ideal building location with end of the road privacy. Enjoy endless days of fishing, kayaking, and bird watching from your doorstep. This lot's prime location means you're just minutes away from excellent schools, scenic trails, and convenient shopping options. Don't miss out on this rare opportunity to own a piece of riverfront paradise in Baxter, MN.

Additional Details:

Lot Acres	4.26
Lot Dimensions	200x870x186x954
School District	181
Taxes	\$842
Taxes with Assessments	\$842
Tax Year	2023

Additional Features:

Driving Directions:

Mapelton Road for .2 mi to Left on Jasperwood-approximately 1 mile to Right on Paris Road-property on Left.



Listed By:
NextHome Horizons

Affinity Real Estate Inc. participates in the Regional Multiple Listing Service of Minnesota, Inc Broker Reciprocity (sm) program, allowing us to display other broker's listings on our website. All properties are subject to prior sale, change or withdrawal.



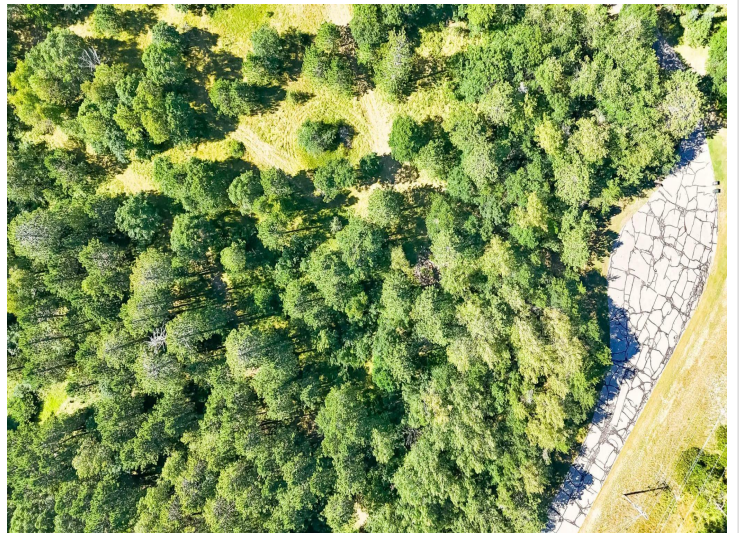
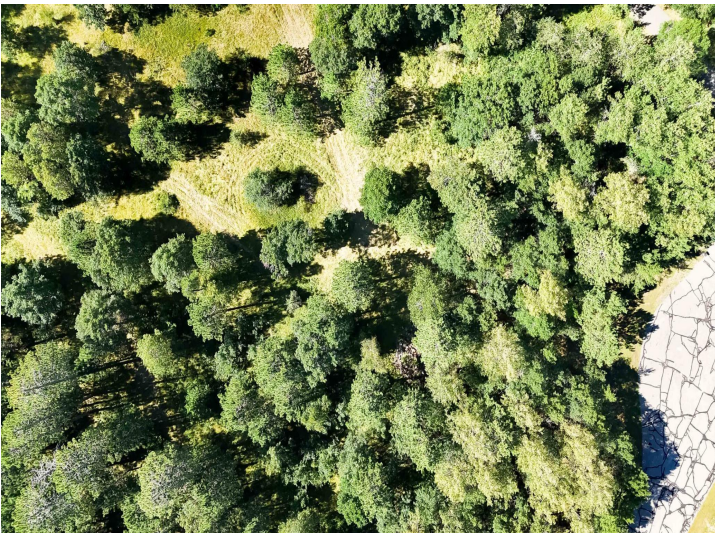
Call Affinity Real Estate

218-237-3333

info@affinityrealestate.com



Affinity Real Estate - 600 Park Avenue South - Park Rapids MN 56470



website: www.AffinityRealEstate.com | email: info@affinityrealestate.com | office: 218-237-3333 | fax: 218-237-3377



\$169,999
 MLS 6595491 Lake Land
 TBD Paris Road
 Baxter MN 56425



website: www.AffinityRealEstate.com | email: info@affinityrealestate.com | office: 218-237-3333 | fax: 218-237-3377



\$169,999

MLS 6595491 Lake Land
TBD Paris Road
Baxter MN 56425



website: www.AffinityRealEstate.com | email: info@affinityrealestate.com | office: 218-237-3333 | fax:218-237-3377



\$169,999
MLS 6595491 Lake Land
TBD Paris Road
Baxter MN 56425