



MLS 6596440 Residential

\$350,000

2,052 sq ft
3 bedrooms
2 baths

18600 Natures Edge Drive
Lake George MN 56458

Status: Closed

Description:

This gorgeous property in Northern Minnesota was built in 2020 and is move in ready. The home features main level living with a walkout basement, 2 bedrooms up and 1 down plus a living area on each level. The septic is compliant for 4 bedrooms and a 4th bedroom could easily be added in the basement. The outdoor setting, which includes a beautiful deck, firepit and stamped concrete patio, is perfect for enjoying all your outdoor activities. This property is surrounded by lakes and trails so you can enjoy all that Northern MN has to offer. It would make for a great family home, vacation getaway or an investment property as a VRBO. This is one you will surely want to see in person. Schedule your showing to see it for yourself!

Additional Details:

Year Built	2020
Lot Acres	2.74
Lot Dimensions	Irregular
Garage Stalls	2
School District	309
Taxes	\$1,324
Taxes with Assessments	\$1,534
Tax Year	2024

Additional Features:

Basement: Walkout **Fuel:** Propane, Wood **Garage:** 2 **Heat:** Forced Air **Sewer:** Septic System Compliant - Yes, Tank with Drainage Field
Water: Drilled, Well **Air Conditioning:** Central Air

Driving Directions:

From Lake George head south on County 4 for 1.5 miles and turn east on Natures Edge. Go around corner and property will be on the left.



Listed By:
Keller Williams Realty Professionals

Affinity Real Estate Inc. participates in the Regional Multiple Listing Service of Minnesota, Inc Broker Reciprocity (sm) program, allowing us to display other broker's listings on our website. All properties are subject to prior sale, change or withdrawal.



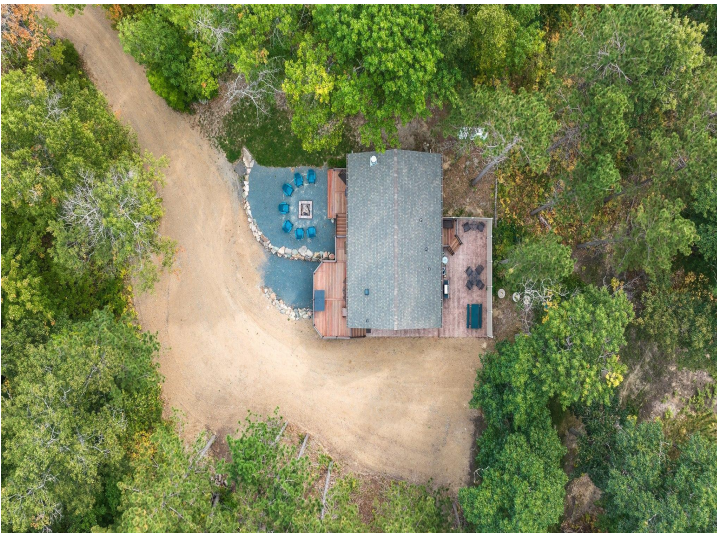
Call Affinity Real Estate

218-237-3333

info@affinityrealestate.com



Affinity Real Estate - 600 Park Avenue South - Park Rapids MN 56470



website: www.AffinityRealEstate.com | email: info@affinityrealestate.com | office: 218-237-3333 | fax:218-237-3377

Affinity
REAL ESTATE INC

\$350,000
MLS 6596440 Residential
18600 Natures Edge Drive
Lake George MN 56458



website: www.AffinityRealEstate.com | email: info@affinityrealestate.com | office: 218-237-3333 | fax:218-237-3377



\$350,000
MLS 6596440 Residential
18600 Natures Edge Drive
Lake George MN 56458



website: www.AffinityRealEstate.com | email: info@affinityrealestate.com | office: 218-237-3333 | fax:218-237-3377

Affinity
REAL ESTATE INC

\$350,000
MLS 6596440 Residential
18600 Natures Edge Drive
Lake George MN 56458



website: www.AffinityRealEstate.com | email: info@affinityrealestate.com | office: 218-237-3333 | fax: 218-237-3377

Affinity
REAL ESTATE INC

\$350,000
MLS 6596440 Residential
18600 Natures Edge Drive
Lake George MN 56458



website: www.AffinityRealEstate.com | email: info@affinityrealestate.com | office: 218-237-3333 | fax:218-237-3377

Affinity
REAL ESTATE INC

\$350,000
MLS 6596440 Residential
18600 Natures Edge Drive
Lake George MN 56458



website: www.AffinityRealEstate.com | email: info@affinityrealestate.com | office: 218-237-3333 | fax: 218-237-3377

Affinity
REAL ESTATE INC

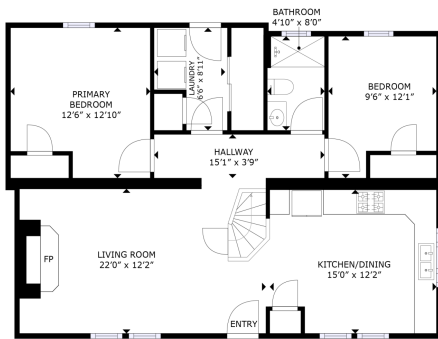
\$350,000
MLS 6596440 Residential
18600 Natures Edge Drive
Lake George MN 56458



website: www.AffinityRealEstate.com | email: info@affinityrealestate.com | office: 218-237-3333 | fax: 218-237-3377

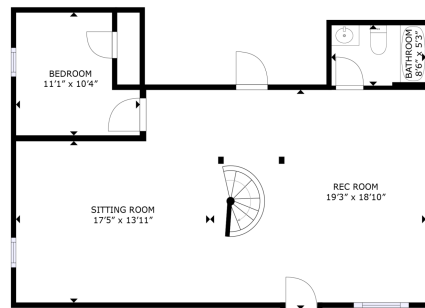
Affinity
REAL ESTATE INC

\$350,000
MLS 6596440 Residential
18600 Natures Edge Drive
Lake George MN 56458



1ST FLOOR

GROSS INTERNAL AREA
BASEMENT: 202 SQ. FT. 1ST FLOOR: 183 SQ. FT.
TOTAL: 1,775 SQ. FT.
SIZES AND DIMENSIONS ARE APPROXIMATE, ACTUAL MAY VARY.



BASEMENT

GROSS INTERNAL AREA
BASEMENT: 202 SQ. FT. 1ST FLOOR: 183 SQ. FT.
TOTAL: 1,775 SQ. FT.
SIZES AND DIMENSIONS ARE APPROXIMATE, ACTUAL MAY VARY.



website: www.AffinityRealEstate.com | email: info@affinityrealestate.com | office: 218-237-3333 | fax: 218-237-3377



\$350,000
MLS 6596440 Residential
18600 Natures Edge Drive
Lake George MN 56458