



MLS 6596648 Residential

\$565,000

2,180 sq ft
3 bedrooms
4 baths

7353 Niemi Circle
Nisswa MN 56468

Status: Hold

Description:

A recently updated 3 bedrooms, 4 bath home surrounded by 5 acres of serene nature filled forests of pines, oaks, maples and birch in Lake Shore! The delightful kitchen features new appliances, granite counter-tops, cabinets and fixtures. Other added amenities include fresh paint on both the interior and exterior of the home, a newer on demand hot water boiler system, heated flooring in the garage, air-conditioning, luxury tiled showers with granite vanity counter-tops in the bathrooms, and a beautiful laundry room with new washer/dryer and storage. The second level features all the bedrooms, including a large primary bedroom with a stunning walk-in ensuite bathroom, complete with a walk-out deck to enjoy a morning cup of coffee listening to the birds. The tastefully landscaped yard offers serene privacy, yet you are only minutes away from the Gull Lake landing and all the best of the Lakes Area dining and entertainment. Your little piece of paradise awaits!

Additional Details:

Year Built	2000
Lot Acres	5
Lot Dimensions	354x721x354x579
Garage Stalls	2
School District	186
Taxes	\$1,918
Taxes with Assessments	\$1,984
Tax Year	2024

Additional Features:

Basement: Slab **Fuel:** Electric, Propane **Garage:** 2 **Heat:** Baseboard, Boiler, Radiant Floor **Sewer:** Private Sewer, Septic System Compliant - Yes, Tank with Drainage Field **Water:** Submersible - 4 Inch, Private, Well **Air Conditioning:** Ductless Mini-Split

Driving Directions:

From Nisswa, Hwy 371 S. to County Rd 29 to right on Jacobs Rd and follow north to 72nd St to right on Niemi Circle and fire # 7353.



Listed By:
Kurilla Real Estate LTD

Affinity Real Estate Inc. participates in the Regional Multiple Listing Service of Minnesota, Inc Broker Reciprocity (sm) program, allowing us to display other broker's listings on our website. All properties are subject to prior sale, change or withdrawal.



Call Affinity Real Estate

218-237-3333

info@affinityrealestate.com



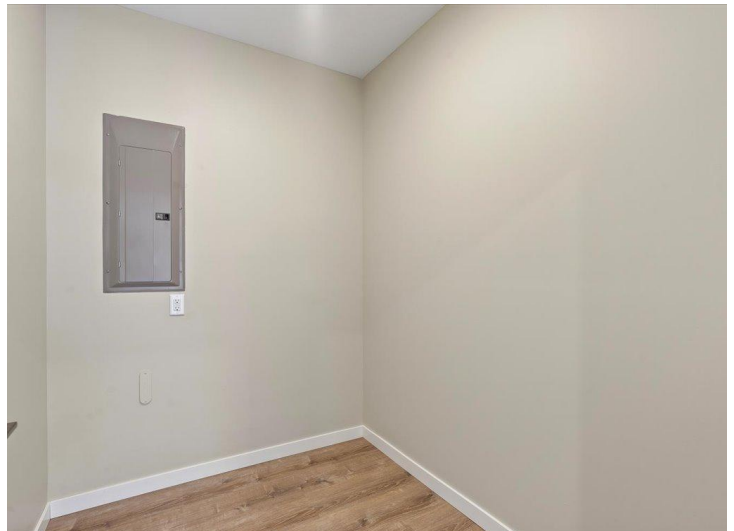
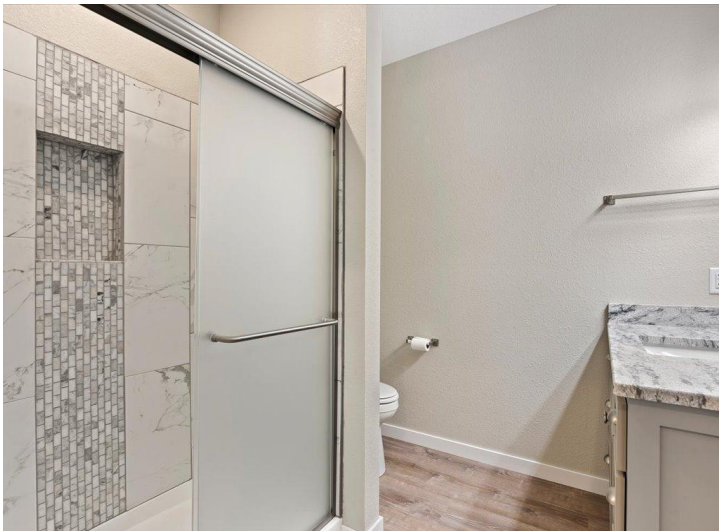
Affinity Real Estate - 600 Park Avenue South - Park Rapids MN 56470



website: www.AffinityRealEstate.com | email: info@affinityrealestate.com | office: 218-237-3333 | fax:218-237-3377

Affinity
REAL ESTATE INC

\$565,000
MLS 6596648 Residential
7353 Niemi Circle
Nisswa MN 56468



website: www.AffinityRealEstate.com | email: info@affinityrealestate.com | office: 218-237-3333 | fax:218-237-3377



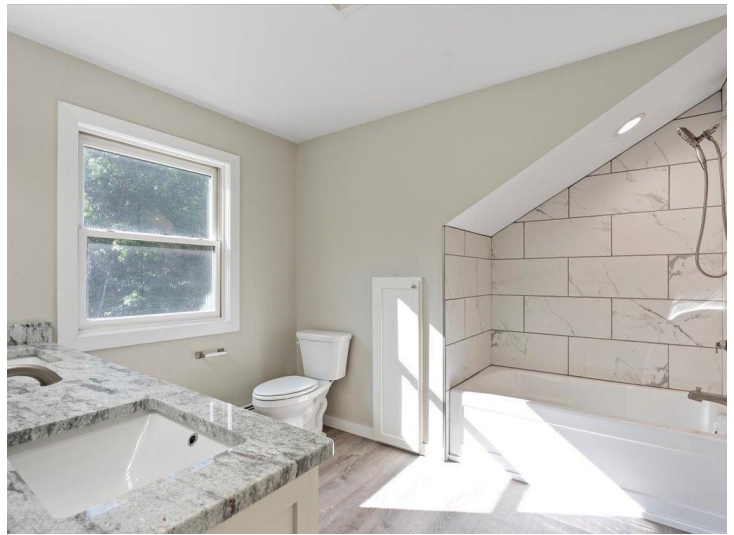
\$565,000
MLS 6596648 Residential
7353 Niemi Circle
Nisswa MN 56468



website: www.AffinityRealEstate.com | email: info@affinityrealestate.com | office: 218-237-3333 | fax:218-237-3377



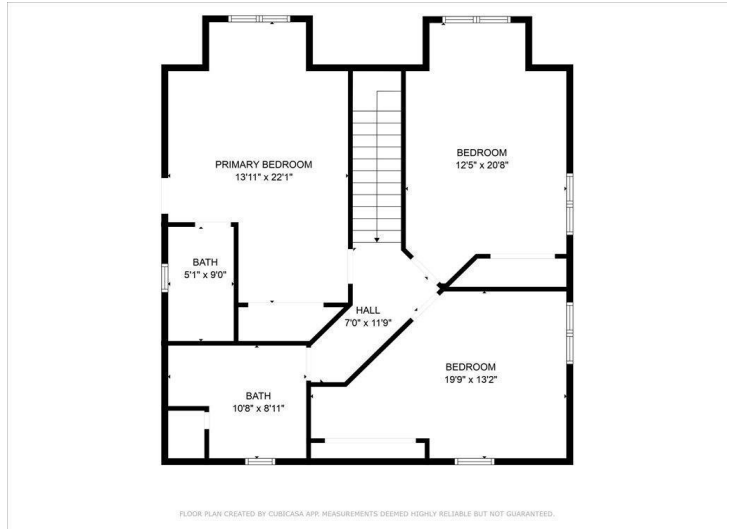
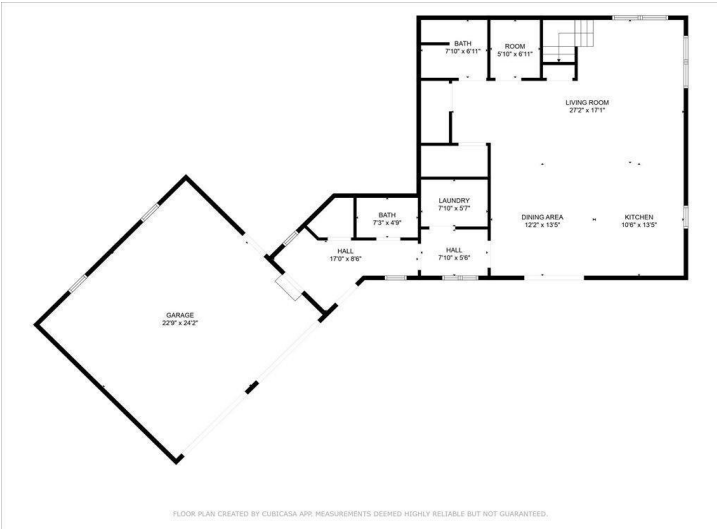
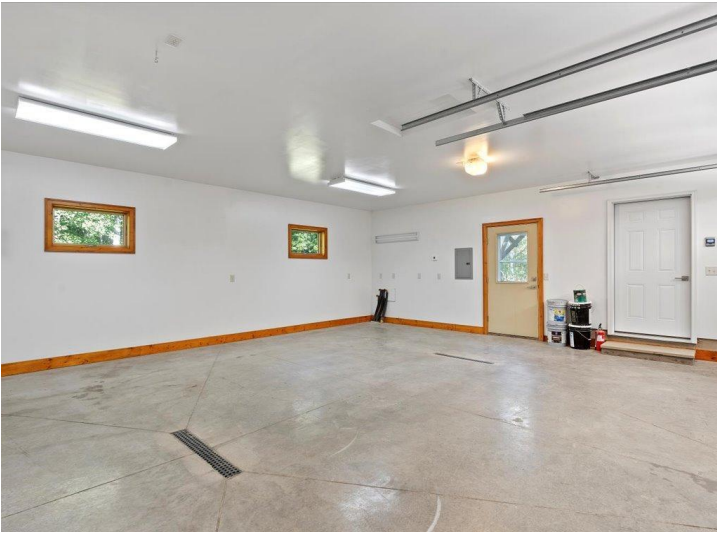
\$565,000
MLS 6596648 Residential
7353 Niemi Circle
Nisswa MN 56468



website: www.AffinityRealEstate.com | email: info@affinityrealestate.com | office: 218-237-3333 | fax: 218-237-3377

Affinity
REAL ESTATE INC

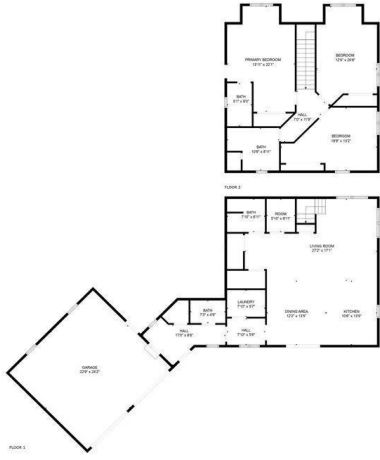
\$565,000
MLS 6596648 Residential
7353 Niemi Circle
Nisswa MN 56468



website: www.AffinityRealEstate.com | email: info@affinityrealestate.com | office: 218-237-3333 | fax: 218-237-3377



\$565,000
 MLS 6596648 Residential
 7353 Niemi Circle
 Nisswa MN 56468



FLOOR PLAN CREATED BY CUBICADA API; MEASUREMENTS DEEMED HIGHLY RELIABLE BUT NOT GUARANTEED.

website: www.AffinityRealEstate.com | email: info@affinityrealestate.com | office: 218-237-3333 | fax:218-237-3377



\$565,000
MLS 6596648 Residential
7353 Niemi Circle
Nisswa MN 56468