



MLS 6597048 Land

\$29,900

2.17 Acres
Subdivided

TBD Rodeo Drive
Bemidji MN 56601

Status: Active

Description:

Perfect building lot in this stellar neighborhood! Over 2 acres in Bemidji's Deerpath Development. Come join the neighborhood!

Additional Details:

Lot Acres	2.17
Lot Dimensions	255x355
School District	31
Taxes	\$339
Taxes with Assessments	\$1,726
Tax Year	2024

Additional Features:

Driving Directions:

Irvine Ave North to fairgrounds Rd NW, West on Fairgrounds Rd, West on Rodeo Dr, Property on North side of the road



Listed By:
Grimes Realty

Affinity Real Estate Inc. participates in the Regional Multiple Listing Service of Minnesota, Inc Broker Reciprocity (sm) program, allowing us to display other broker's listings on our website. All properties are subject to prior sale, change or withdrawal.



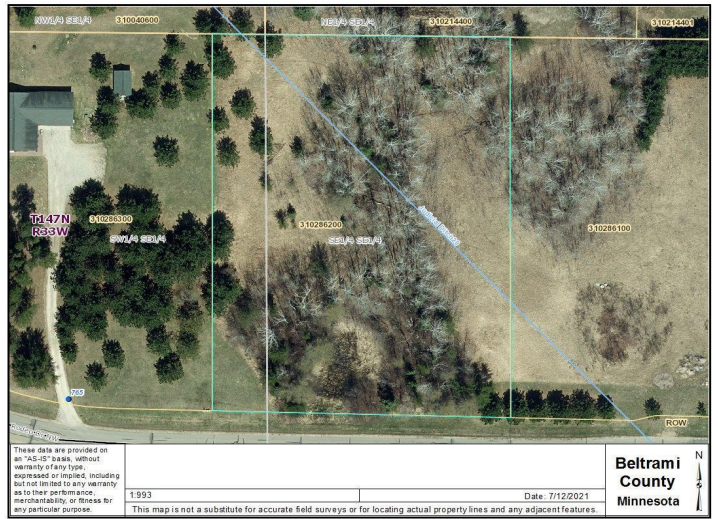
Call Affinity Real Estate

218-237-3333

info@affinityrealestate.com



Affinity Real Estate - 600 Park Avenue South - Park Rapids MN 56470



website: www.AffinityRealEstate.com | email: info@affinityrealestate.com | office: 218-237-3333 | fax:218-237-3377



\$29,900
 MLS 6597048 Land
 TBD Rodeo Drive
 Bemidji MN 56601



website: www.AffinityRealEstate.com | email: info@affinityrealestate.com | office: 218-237-3333 | fax:218-237-3377



\$29,900
MLS 6597048 Land
TBD Rodeo Drive
Bemidji MN 56601