



MLS 6597148 Land

\$110,000

5.03 Acres
Other

49928 County Highway 54
New York Mills MN 56567

Status: Active

Description:

A 5.03 acre wooded lot, with easement access to Buchanan Lake! Very level with mature pine tree's throughout. Parcel has an independent septic and a shared Well. Great location between Ottertail and New York Mills, with many lakes nearby. Well placed clearings with tree's outlining the property for privacy, perfect location for an RV Camp or build a home. The 10' lake easement is level with sandy bottom, and directly next to Highway 54 on the north side of Buchanan Lake.

Additional Details:

Lot Acres	5.03
Lot Dimensions	335'335'
School District	553
Taxes	\$408
Taxes with Assessments	\$408
Tax Year	2024

Additional Features:

Driving Directions:

Take Hwy 67 South from Henning, take a Right on County Road 54 3 miles. Property on South side of County Road 54.



Listed By:
Boll Realty

Affinity Real Estate Inc. participates in the Regional Multiple Listing Service of Minnesota, Inc Broker Reciprocity (sm) program, allowing us to display other broker's listings on our website. All properties are subject to prior sale, change or withdrawal.



Call Affinity Real Estate

218-237-3333

info@affinityrealestate.com



Affinity Real Estate - 600 Park Avenue South - Park Rapids MN 56470



website: www.AffinityRealEstate.com | email: info@affinityrealestate.com | office: 218-237-3333 | fax:218-237-3377



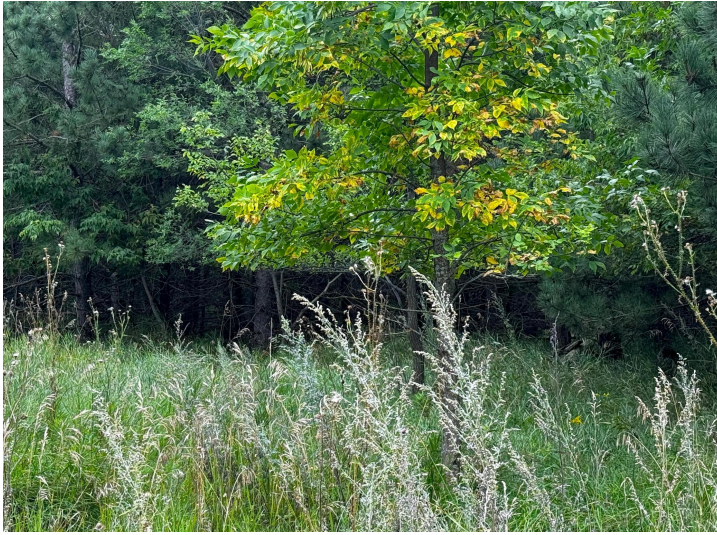
\$110,000
MLS 6597148 Land
49928 County Highway 54
New York Mills MN 56567



website: www.AffinityRealEstate.com | email: info@affinityrealestate.com | office: 218-237-3333 | fax:218-237-3377



\$110,000
MLS 6597148 Land
49928 County Highway 54
New York Mills MN 56567



website: www.AffinityRealEstate.com | email: info@affinityrealestate.com | office: 218-237-3333 | fax:218-237-3377



\$110,000
MLS 6597148 Land
49928 County Highway 54
New York Mills MN 56567



website: www.AffinityRealEstate.com | email: info@affinityrealestate.com | office: 218-237-3333 | fax:218-237-3377



\$110,000
MLS 6597148 Land
49928 County Highway 54
New York Mills MN 56567



website: www.AffinityRealEstate.com | email: info@affinityrealestate.com | office: 218-237-3333 | fax:218-237-3377



\$110,000
MLS 6597148 Land
49928 County Highway 54
New York Mills MN 56567