



MLS 6597552 Residential

**\$252,000**

1,120 sq ft  
3 bedrooms  
2 baths

9790 Boneset Drive  
Bemidji MN 56601

Status: Active

**Description:**

Don't miss out on this 3 bedroom 2 bath one level home on a private wooded lot. Open concept living, kitchen, dining. Two stall heated garage. Located in Aspen Ridge one of the regions newest developments with close proximity to snowmobile trails and state land.

**Additional Details:**

Year Built	2023
Lot Acres	1.3
Lot Dimensions	200x300
Garage Stalls	2
School District	31
Taxes	\$254
Taxes with Assessments	\$254
Tax Year	2023

**Additional Features:**

**Basement:** Slab **Fuel:** Electric **Garage:** 2 **Heat:** Boiler, Hot Water, Radiant Floor **Sewer:** Septic System Compliant - Yes **Water:** Submersible - 4 Inch **Air Conditioning:** Ductless Mini-Split

**Driving Directions:**

Hwy 2 west, pass Wilton, take right (north) on Scribner RD NW, left on Boneset, follow to 9790 on the left.



Listed By:  
Grimes Realty

Affinity Real Estate Inc. participates in the Regional Multiple Listing Service of Minnesota, Inc Broker Reciprocity (sm) program, allowing us to display other broker's listings on our website. All properties are subject to prior sale, change or withdrawal.



Call Affinity Real Estate

**218-237-3333**

[info@affinityrealestate.com](mailto:info@affinityrealestate.com)



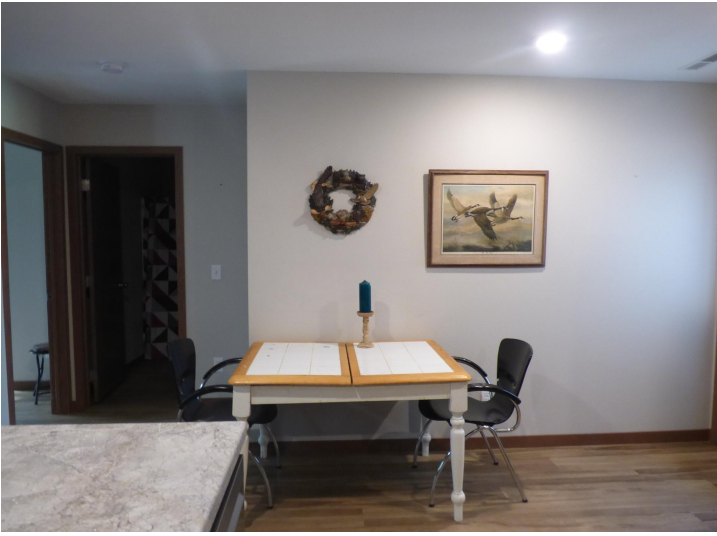
Affinity Real Estate - 600 Park Avenue South - Park Rapids MN 56470



website: [www.AffinityRealEstate.com](http://www.AffinityRealEstate.com) | email: [info@affinityrealestate.com](mailto:info@affinityrealestate.com) | office: 218-237-3333 | fax:218-237-3377

**Affinity**  
REAL ESTATE INC

**\$252,000**  
MLS 6597552 Residential  
9790 Boneset Drive  
Bemidji MN 56601



website: [www.AffinityRealEstate.com](http://www.AffinityRealEstate.com) | email: [info@affinityrealestate.com](mailto:info@affinityrealestate.com) | office: 218-237-3333 | fax: 218-237-3377

**Affinity**  
REAL ESTATE INC

**\$252,000**  
MLS 6597552 Residential  
9790 Boneset Drive  
Bemidji MN 56601



website: [www.AffinityRealEstate.com](http://www.AffinityRealEstate.com) | email: [info@affinityrealestate.com](mailto:info@affinityrealestate.com) | office: 218-237-3333 | fax:218-237-3377

**Affinity**  
REAL ESTATE INC

**\$252,000**  
MLS 6597552 Residential  
9790 Boneset Drive  
Bemidji MN 56601



website: [www.AffinityRealEstate.com](http://www.AffinityRealEstate.com) | email: [info@affinityrealestate.com](mailto:info@affinityrealestate.com) | office: 218-237-3333 | fax:218-237-3377



**\$252,000**  
MLS 6597552 Residential  
9790 Boneset Drive  
Bemidji MN 56601