



MLS 6597559 Land

**\$95,000**

0.56 Square Feet  
Raw Land

xx 23rd Street  
Bemidji MN 56601

Status: Active

**Description:**

Excellent development opportunity in a growing commercial neighborhood. Easy access from Highway 2 and 71. Site is located directly south of Home Depot near numerous medical providers, several big-box retailers including Target, Menards and Walmart plus numerous medium-box retailers. Excellent location to move or expand your office, service or medical business.

**Additional Details:**

Lot Acres	0.56
Lot Dimensions	195x125
School District	31
Taxes	\$1,846
Taxes with Assessments	\$1,846
Tax Year	2024

**Additional Features:**

**Driving Directions:**

From Stoplight on Paul Bunyan Dr. go south on Middle School Dr NW 200 ft turn (R) on 24th ST NW to signs



Listed By:  
eXp Realty

Affinity Real Estate Inc. participates in the Regional Multiple Listing Service of Minnesota, Inc Broker Reciprocity (sm) program, allowing us to display other broker's listings on our website. All properties are subject to prior sale, change or withdrawal.



**Call Affinity Real Estate**

**218-237-3333**

**info@affinityrealestate.com**



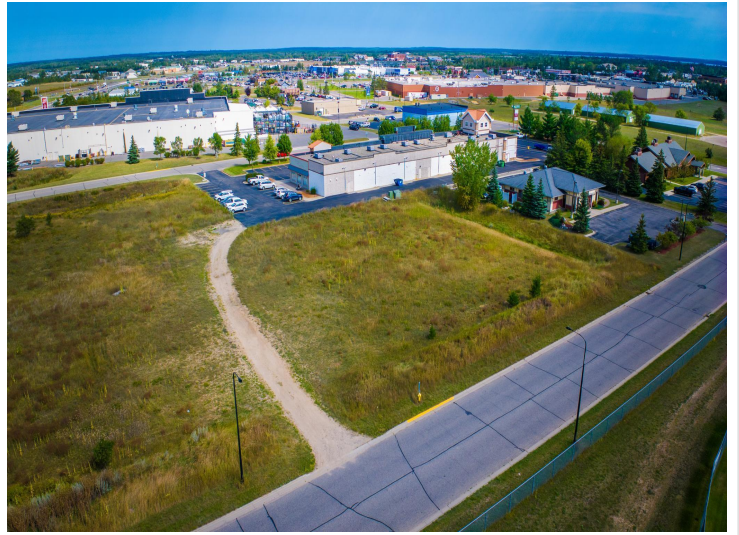
**Affinity Real Estate - 600 Park Avenue South - Park Rapids MN 56470**



website: [www.AffinityRealEstate.com](http://www.AffinityRealEstate.com) | email: [info@affinityrealestate.com](mailto:info@affinityrealestate.com) | office: 218-237-3333 | fax:218-237-3377

**Affinity**  
REAL ESTATE INC

**\$95,000**  
MLS 6597559 Land  
xx 23rd Street  
Bemidji MN 56601



website: [www.AffinityRealEstate.com](http://www.AffinityRealEstate.com) | email: [info@affinityrealestate.com](mailto:info@affinityrealestate.com) | office: 218-237-3333 | fax: 218-237-3377

**Affinity**  
REAL ESTATE INC

**\$95,000**  
MLS 6597559 Land  
xx 23rd Street  
Bemidji MN 56601



website: [www.AffinityRealEstate.com](http://www.AffinityRealEstate.com) | email: [info@affinityrealestate.com](mailto:info@affinityrealestate.com) | office: 218-237-3333 | fax:218-237-3377



**\$95,000**  
MLS 6597559 Land  
xx 23rd Street  
Bemidji MN 56601