



MLS 6597565 Lake Home

\$1,555,000

4,000 sq ft
3 bedrooms
3 baths

11419 Whitefish Avenue
Crosslake MN 56442

Waterfront: Whitefish Lake
(18031000)

Status: Active

Description:

Welcome to this meticulously built custom home with spectacular lake views on the sought after Manhattan Beach Peninsula on Lower Whitefish Lake. Nestled in the pines, this lake home boasts 4,000 sq.ft. of comfortable finished living space with another 2,000 unfinished sq.ft. in the basement, there is an egress window in the basement as well, waiting for your creativity. Two stunning stone fireplaces create a captivating focal point that exudes warmth inviting cozy evenings by the fire. Hand crafted custom cabinetry throughout. This home will come furnished and move-in-ready, whether for yourselves or your VRBO. Enjoying the spectacular lake view on the 40-foot covered porch anytime of day is so refreshing. On almost 1/2 an acre with a little over 60 feet of shoreline. Welcome Home!

Additional Details:

Year Built	2007
Lot Acres	0.46
Lot Dimensions	325.73x60.19x328.99x59.02
Garage Stalls	3
School District	2174
Taxes	\$8,401
Taxes with Assessments	\$8,426
Tax Year	2024

Additional Features:

Fuel: Natural Gas, Wood **Heat:** Forced Air, Fireplace(s)

Driving Directions:

Go North on Route 66 / Paul Bunyan Scenic Highway past Moonlight Square, go to Manhattan Beach Resort, take a left on Manhattan Point Blvd. go approximately 2 miles, take a left at Hilltop Drive, go about 1/4 mile, veer to the right to follow Whitefish Ave, the property will be on your left. 11419.



Listed By:
Weichert REALTORS Tower Properties

Affinity Real Estate Inc. participates in the Regional Multiple Listing Service of Minnesota, Inc Broker Reciprocity (sm) program, allowing us to display other broker's listings on our website. All properties are subject to prior sale, change or withdrawal.



Call Affinity Real Estate

218-237-3333

info@affinityrealestate.com



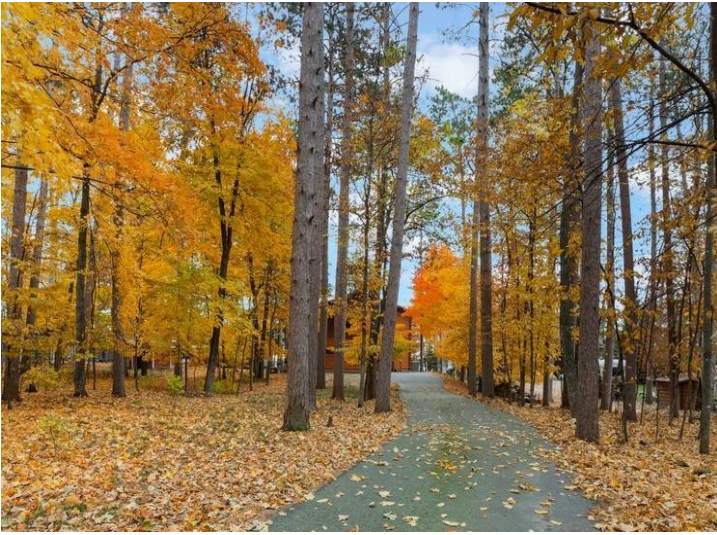
Affinity Real Estate - 600 Park Avenue South - Park Rapids MN 56470



website: www.AffinityRealEstate.com | email: info@affinityrealestate.com | office: 218-237-3333 | fax: 218-237-3377

Affinity
REAL ESTATE INC

\$1,555,000
MLS 6597565 Lake Home
11419 Whitefish Avenue
Crosslake MN 56442



website: www.AffinityRealEstate.com | email: info@affinityrealestate.com | office: 218-237-3333 | fax:218-237-3377

Affinity
REAL ESTATE INC

\$1,555,000
MLS 6597565 Lake Home
11419 Whitefish Avenue
Crosslake MN 56442



website: www.AffinityRealEstate.com | email: info@affinityrealestate.com | office: 218-237-3333 | fax: 218-237-3377

Affinity
REAL ESTATE INC

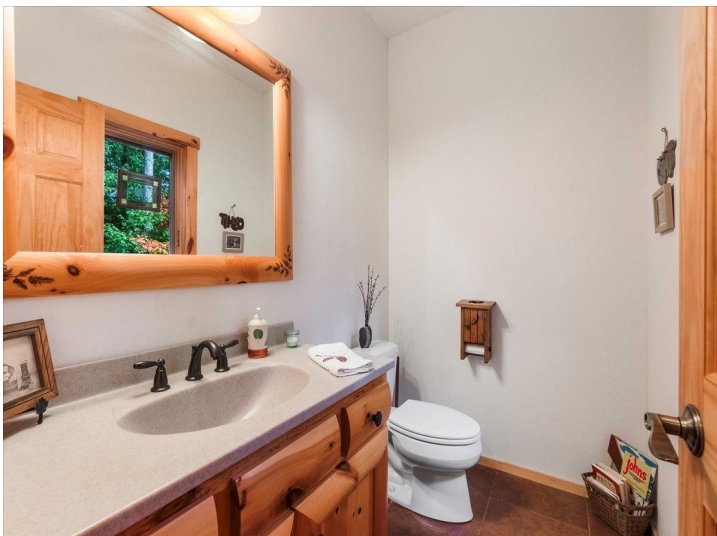
\$1,555,000
MLS 6597565 Lake Home
11419 Whitefish Avenue
Crosslake MN 56442



website: www.AffinityRealEstate.com | email: info@affinityrealestate.com | office: 218-237-3333 | fax: 218-237-3377

Affinity
REAL ESTATE INC

\$1,555,000
MLS 6597565 Lake Home
11419 Whitefish Avenue
Crosslake MN 56442



website: www.AffinityRealEstate.com | email: info@affinityrealestate.com | office: 218-237-3333 | fax: 218-237-3377

Affinity
REAL ESTATE INC

\$1,555,000
MLS 6597565 Lake Home
11419 Whitefish Avenue
Crosslake MN 56442



website: www.AffinityRealEstate.com | email: info@affinityrealestate.com | office: 218-237-3333 | fax:218-237-3377

Affinity
REAL ESTATE INC

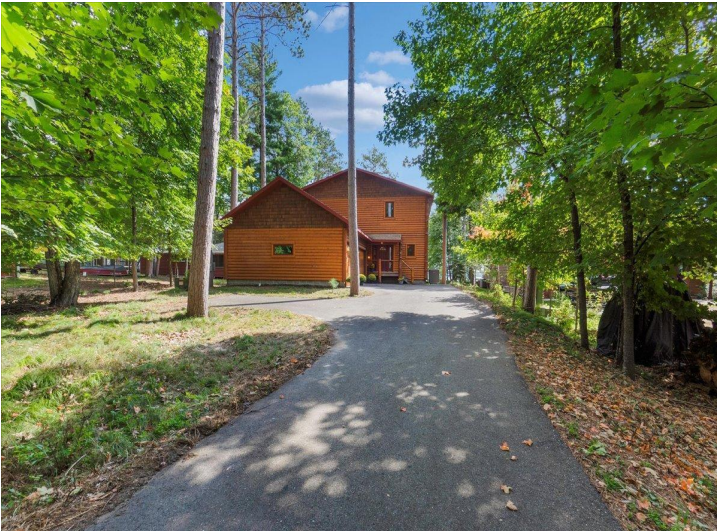
\$1,555,000
MLS 6597565 Lake Home
11419 Whitefish Avenue
Crosslake MN 56442



website: www.AffinityRealEstate.com | email: info@affinityrealestate.com | office: 218-237-3333 | fax: 218-237-3377

Affinity
REAL ESTATE INC

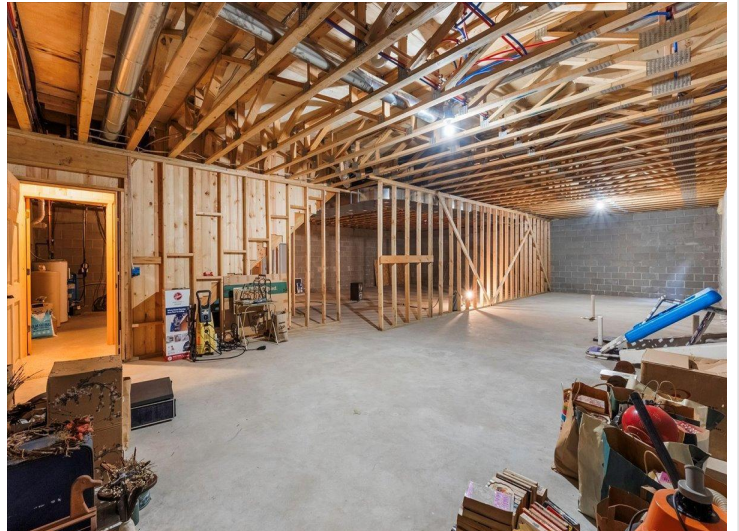
\$1,555,000
MLS 6597565 Lake Home
11419 Whitefish Avenue
Crosslake MN 56442



website: www.AffinityRealEstate.com | email: info@affinityrealestate.com | office: 218-237-3333 | fax:218-237-3377



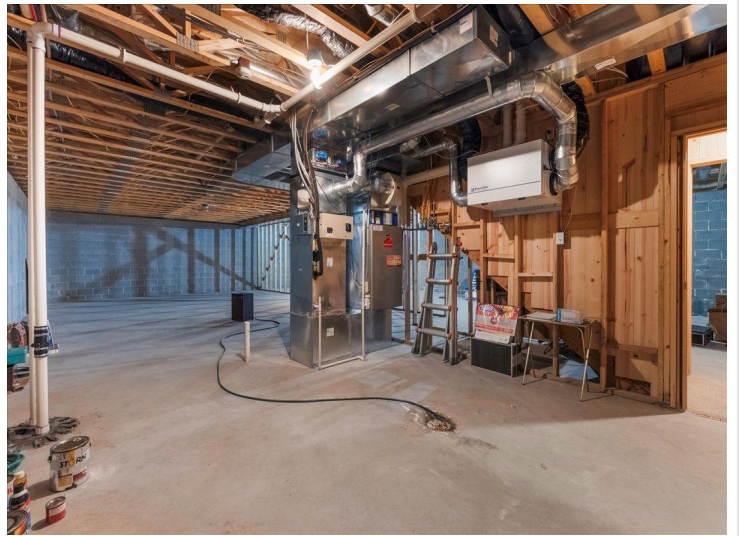
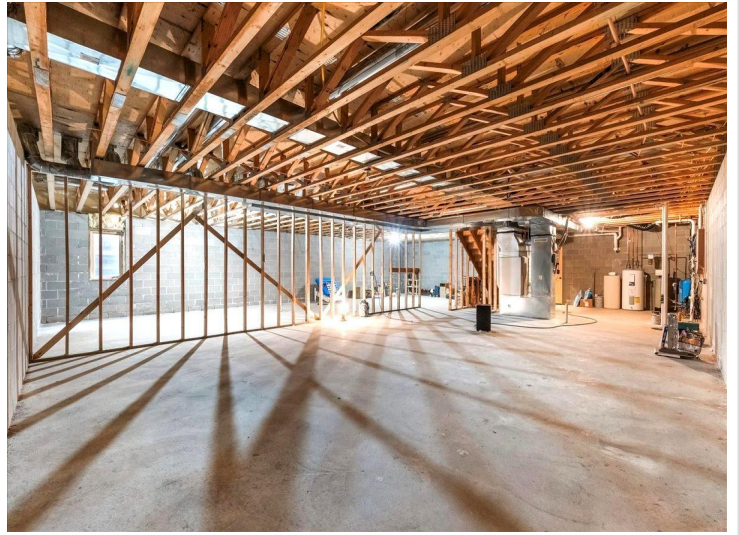
\$1,555,000
MLS 6597565 Lake Home
11419 Whitefish Avenue
Crosslake MN 56442



website: www.AffinityRealEstate.com | email: info@affinityrealestate.com | office: 218-237-3333 | fax:218-237-3377

Affinity
REAL ESTATE INC

\$1,555,000
MLS 6597565 Lake Home
11419 Whitefish Avenue
Crosslake MN 56442



website: www.AffinityRealEstate.com | email: info@affinityrealestate.com | office: 218-237-3333 | fax: 218-237-3377

Affinity
REAL ESTATE INC

\$1,555,000
MLS 6597565 Lake Home
11419 Whitefish Avenue
Crosslake MN 56442



website: www.AffinityRealEstate.com | email: info@affinityrealestate.com | office: 218-237-3333 | fax:218-237-3377

Affinity
REAL ESTATE INC

\$1,555,000
MLS 6597565 Lake Home
11419 Whitefish Avenue
Crosslake MN 56442



website: www.AffinityRealEstate.com | email: info@affinityrealestate.com | office: 218-237-3333 | fax:218-237-3377



\$1,555,000
MLS 6597565 Lake Home
11419 Whitefish Avenue
Crosslake MN 56442



website: www.AffinityRealEstate.com | email: info@affinityrealestate.com | office: 218-237-3333 | fax:218-237-3377

Affinity
REAL ESTATE INC

\$1,555,000
MLS 6597565 Lake Home
11419 Whitefish Avenue
Crosslake MN 56442