



MLS 6597580 Land

\$95,000

0.56 Square Feet
Raw Land

xxxxx 23rd Street
Bemidji MN 56601

Status: Active

Description:

Excellent development opportunity in a growing commercial neighborhood. Easy access from Highway 2 and 71. Site is located directly south of Home Depot near numerous medical providers, several big-box retailers including Target, Menards and Walmart plus numerous medium-box retailers. Excellent location to move or expand your office, service or medical business.

Additional Details:

Lot Acres	0.56
Lot Dimensions	195x125
School District	31
Taxes	\$1,846
Taxes with Assessments	\$1,846
Tax Year	2024

Additional Features:

Driving Directions:

From stop light on Paul Bunyan Dr go South on Middle School Dr NW 200 ft. turn right on 24th St NW to signs.



Listed By:
eXp Realty North Inc

Affinity Real Estate Inc. participates in the Regional Multiple Listing Service of Minnesota, Inc Broker Reciprocity (sm) program, allowing us to display other broker's listings on our website. All properties are subject to prior sale, change or withdrawal.



Call Affinity Real Estate

218-237-3333

info@affinityrealestate.com



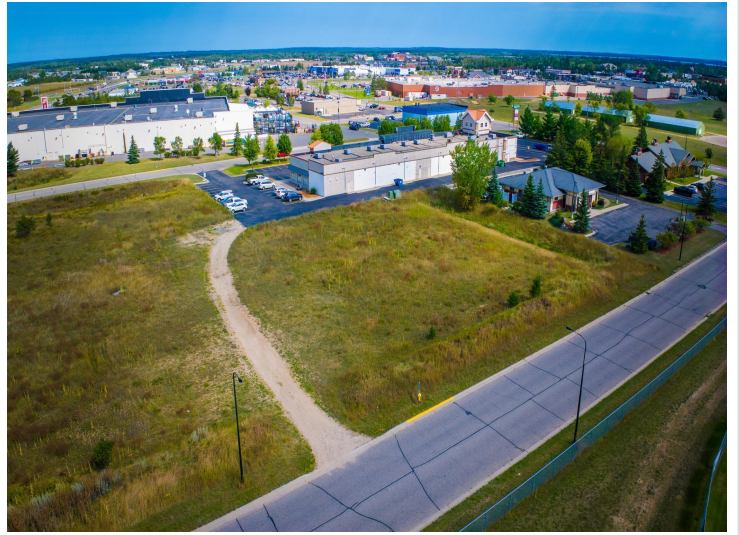
Affinity Real Estate - 600 Park Avenue South - Park Rapids MN 56470



website: www.AffinityRealEstate.com | email: info@affinityrealestate.com | office: 218-237-3333 | fax: 218-237-3377



\$95,000
 MLS 6597580 Land
 xxxxx 23rd Street
 Bemidji MN 56601



website: www.AffinityRealEstate.com | email: info@affinityrealestate.com | office: 218-237-3333 | fax: 218-237-3377



\$95,000
 MLS 6597580 Land
 xxxxx 23rd Street
 Bemidji MN 56601



website: www.AffinityRealEstate.com | email: info@affinityrealestate.com | office: 218-237-3333 | fax:218-237-3377



\$95,000
MLS 6597580 Land
xxxxx 23rd Street
Bemidji MN 56601