



MLS 6597707 Residential

**\$650,000**

2,056 sq ft  
4 bedrooms  
2 baths

1262 Crow Drive  
Pillager MN 56473

Status: Active

#### Description:

Welcome to 1262 Crow Wing Dr. SW in Pillager, MN – a 21.5-acre property designed for comfort, convenience, and country living. Conveniently located just 10 miles from the intersection of Hwy 371 and State Hwy 210, this property offers easy access to nearby amenities while maintaining its peaceful privacy.

This stunning property features a spacious four-bedroom, two-bath home with main-floor living for ultimate convenience. A cozy wood-burning fireplace set against a statement brick wall is perfectly positioned near the living room, creating a warm and inviting atmosphere. Modern conveniences include natural gas, in-floor heating, and a ductless AC and heat system, ensuring year-round comfort.


The attached two-car garage is just the beginning. A 54 x 44 pole building offers ample space for four additional vehicles and includes a 22 x 29 heated workshop and a dedicated tack room—ideal for hobbyists, equestrians, or anyone needing extra storage.

For horse lovers, this property is a dream come true. The land is equipped with electrical fencing, an irrigation system with two runs in the pasture, a standpoint well for agricultural needs, and a drilled well for the home. There's also a loafing shed in the pasture for horses to shelter from the elements, making this property fully ready for equestrian enthusiasts. An inground sprinkler system keeps the landscaping lush, and the apple trees add charm to the already scenic surroundings. As you drive into the property, you'll be greeted by the picturesque front pasture with beautiful wood fencing, offering end-of-road privacy and tranquility.

Don't miss this rare opportunity to own your private country retreat, perfectly set up for equestrian or agricultural enthusiasts. Schedule your showing today and make 1262 Crow Wing Dr. SW your forever home!

#### Additional Details:

Year Built	1995
Lot Acres	21.5
Lot Dimensions	1206x425x90x124x975x328x508x876
Garage Stalls	6
School District	116
Taxes	\$2,824
Taxes with Assessments	\$2,890
Tax Year	2025

 Listed By:  
Edina Realty, Inc.

**Basement:** None **Fuel:** Natural Gas **Wood:** Garage: 6 **Heat:** Ductless Mini Split (2 Units) **Hot Water:** Radiant Floor **Sewer:** Tank with Drainage Field **Water:** Drilled, Sand Point **Air Conditioning:** Ductless Mini Split

**Driving Directions:** us to display other broker's listings on our website. All properties are subject to prior sale, change or withdrawal.

From Baxter go west on 210, Left on Co Rd 36, Left on 13th Ave SW, Left on Crow Dr SW, Follow road to driveway. **Affinity Real Estate, 600 Park Avenue South, Park Rapids MN 56470**



Call Affinity Real Estate

**218-237-3333**

[info@affinityrealestate.com](mailto:info@affinityrealestate.com)







website: [www.AffinityRealEstate.com](http://www.AffinityRealEstate.com) | email: [info@affinityrealestate.com](mailto:info@affinityrealestate.com) | office: 218-237-3333 | fax: 218-237-3377

**Affinity**  
REAL ESTATE INC

**\$650,000**  
MLS 6597707 Residential  
1262 Crow Drive  
Pillager MN 56473





website: [www.AffinityRealEstate.com](http://www.AffinityRealEstate.com) | email: [info@affinityrealestate.com](mailto:info@affinityrealestate.com) | office: 218-237-3333 | fax: 218-237-3377

**Affinity**  
REAL ESTATE INC

**\$650,000**  
MLS 6597707 Residential  
1262 Crow Drive  
Pillager MN 56473



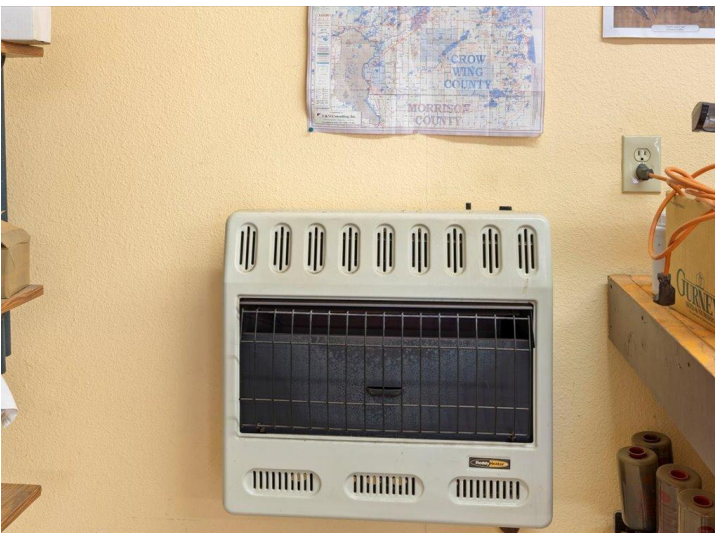
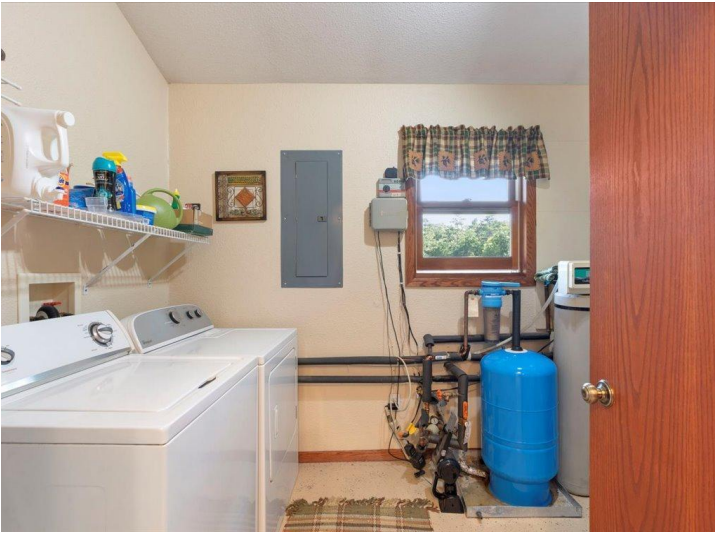


website: [www.AffinityRealEstate.com](http://www.AffinityRealEstate.com) | email: [info@affinityrealestate.com](mailto:info@affinityrealestate.com) | office: 218-237-3333 | fax: 218-237-3377

**Affinity**  
REAL ESTATE INC

**\$650,000**  
MLS 6597707 Residential  
1262 Crow Drive  
Pillager MN 56473





website: [www.AffinityRealEstate.com](http://www.AffinityRealEstate.com) | email: [info@affinityrealestate.com](mailto:info@affinityrealestate.com) | office: 218-237-3333 | fax: 218-237-3377

**Affinity**  
REAL ESTATE INC

**\$650,000**  
MLS 6597707 Residential  
1262 Crow Drive  
Pillager MN 56473





website: [www.AffinityRealEstate.com](http://www.AffinityRealEstate.com) | email: [info@affinityrealestate.com](mailto:info@affinityrealestate.com) | office: 218-237-3333 | fax: 218-237-3377

**Affinity**  
REAL ESTATE INC

**\$650,000**  
MLS 6597707 Residential  
1262 Crow Drive  
Pillager MN 56473





website: [www.AffinityRealEstate.com](http://www.AffinityRealEstate.com) | email: [info@affinityrealestate.com](mailto:info@affinityrealestate.com) | office: 218-237-3333 | fax: 218-237-3377



**\$650,000**  
 MLS 6597707 Residential  
 1262 Crow Drive  
 Pillager MN 56473





website: [www.AffinityRealEstate.com](http://www.AffinityRealEstate.com) | email: [info@affinityrealestate.com](mailto:info@affinityrealestate.com) | office: 218-237-3333 | fax: 218-237-3377



**\$650,000**  
 MLS 6597707 Residential  
 1262 Crow Drive  
 Pillager MN 56473





website: [www.AffinityRealEstate.com](http://www.AffinityRealEstate.com) | email: [info@affinityrealestate.com](mailto:info@affinityrealestate.com) | office: 218-237-3333 | fax: 218-237-3377

**Affinity**  
REAL ESTATE INC

**\$650,000**  
MLS 6597707 Residential  
1262 Crow Drive  
Pillager MN 56473