



MLS 6597775 Lake Land

\$499,000

Description:

Featuring 80 acres with 840' of lakeshore on beautiful Bad Axe. This one-of-a-kind acreage has had long term ownership since the 1970's and has never been logged. Bordering hundreds of acres of county land gives you the utmost privacy along with a great habitat for deer, bear, grouse and lots of waterfowl. Create endless memories enjoying the recreational trails, hunting, boating and fishing. This would also make a great investment property or a place to build your dream home.

Additional Details:

Lot Acres	80.4
Lot Dimensions	Irregular
School District	309
Taxes	\$1,900
Taxes with Assessments	\$1,900
Tax Year	2024

Additional Features:

Driving Directions:

From Hwy 34/71 in Park Rapids go east on 34 to Cty 4 and turn left. Follow to just past Emmaville to 290th street and turn right and follow it till it ends. Property #'s 19432 and 19434 is not part of this acreage but the 80 acres and lakeshore are all around those 2 homes.



Listed By:
Affinity Real Estate Inc.

Affinity Real Estate Inc. participates in the Regional Multiple Listing Service of Minnesota, Inc Broker Reciprocity (sm) program, allowing us to display other broker's listings on our website. All properties are subject to prior sale, change or withdrawal.



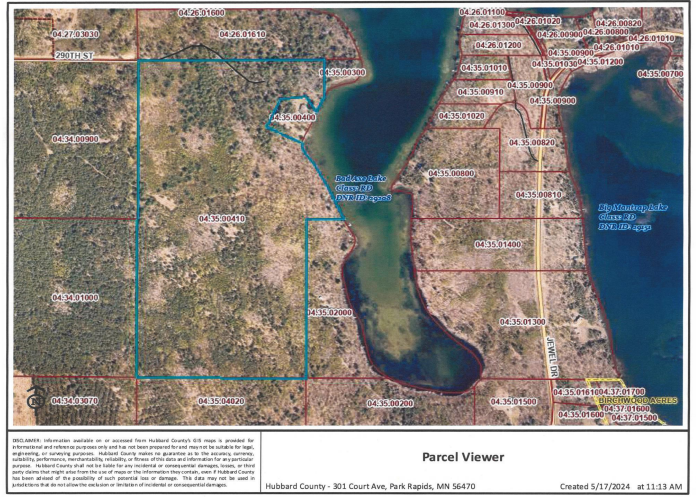
Call Affinity Real Estate

218-237-3333

info@affinityrealestate.com



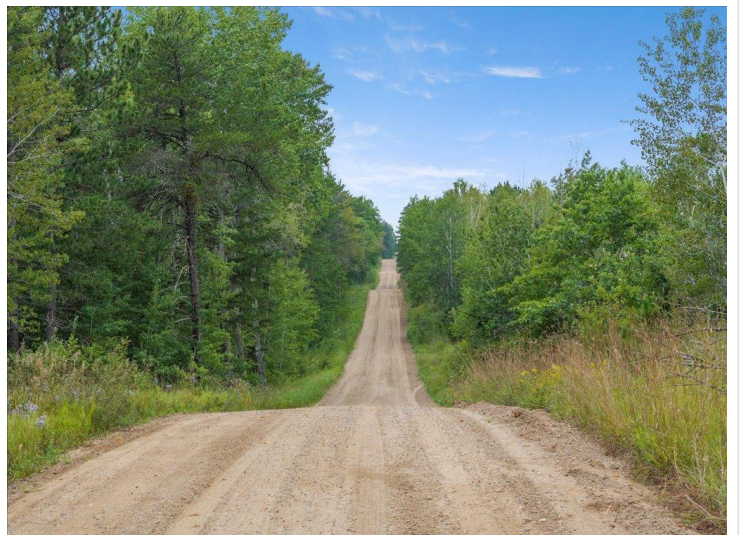
Affinity Real Estate - 600 Park Avenue South - Park Rapids MN 56470



website: www.AffinityRealEstate.com | email: info@affinityrealestate.com | office: 218-237-3333 | fax: 218-237-3377



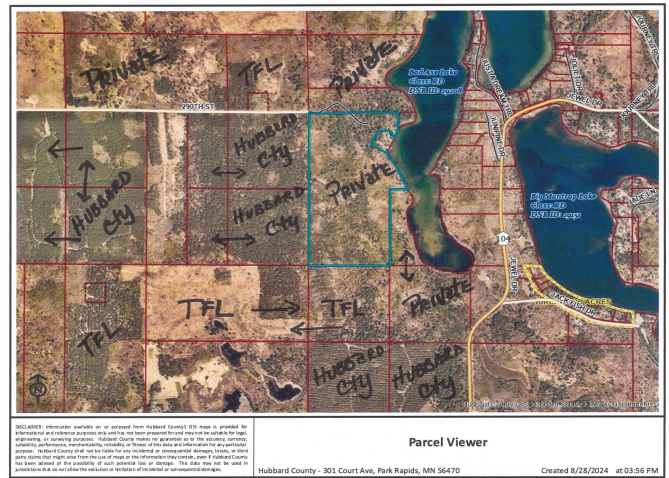
\$499,000
 MLS 6597775 Lake Land
 TBD 290th Street
 Park Rapids MN 56470



website: www.AffinityRealEstate.com | email: info@affinityrealestate.com | office: 218-237-3333 | fax:218-237-3377



\$499,000
MLS 6597775 Lake Land
TBD 290th Street
Park Rapids MN 56470



8/21/24, 3:08 PM

Bad Axe Lake Property Map (1).jpg

https://mail.google.com/mail/u/1/#inbox/FMfcg2GxTPDrcXSKWfdeMmMgPvgbzg?projector=1&messagePartId=0-2

1/1

website: www.AffinityRealEstate.com | email: info@affinityrealestate.com | office: 218-237-3333 | fax:218-237-3377



\$499,000
MLS 6597775 Lake Land
TBD 290th Street
Park Rapids MN 56470