



MLS 6597873 Residential

**\$399,900**

3,840 sq ft  
3 bedrooms  
3 baths

15743 County Road 31  
Menahga MN 56464

Status: Active

**Description:**

Set on 5 acres, this 3-bedroom, 3-bath home offers both comfort and versatility. The spacious primary bedroom includes a walk-in closet and private full bath, while main floor laundry adds convenience. A standout feature is the 30 x 40 heated and insulated garage, perfect for hobbies or storage. The basement is designed for hospitality, featuring a kitchen, full bath, family room, and three framed rooms bedrooms. Outdoor living has a large front concrete patio, back deck, and two fenced-in areas, includes a privacy fence and a fenced horse pasture and has an RV hookup in place. This home combines modern comfort with rural charm, offering endless possibilities for living and entertaining. Located not far from the Huntersville State Forest for hours of trail riding, camping and exploring. If you love music then this is a great location to enjoy the Menahga Mid Summer Fest. This is also a great home to have a business with the use of the large garage. It also has the potential for a VRBO with having lower level accommodations already in place.

**Additional Details:**


Year Built	2020
Lot Acres	5
Lot Dimensions	467 x 467
Garage Stalls	4
School District	821
Taxes	\$4,028
Taxes with Assessments	\$4,088
Tax Year	2024

**Additional Features:**

**Basement:** Block, Drain Tiled, Full, Partially Finished **Fuel:** Propane **Garage:** 4 **Heat:** Forced Air **Sewer:** Mound Septic, Private Sewer, Septic System Compliant - Yes **Water:** Drilled, Private, Well **Air Conditioning:** Central Air

**Driving Directions:**

Take Hwy 71 into Menahga. Go East on County 31/3rd St E. Follow for a few short miles to the property on the right.

 Listed By:  
Keller Williams Realty Professionals

Affinity Real Estate Inc. participates in the Regional Multiple Listing Service of Minnesota, Inc Broker Reciprocity (sm) program, allowing us to display other broker's listings on our website. All properties are subject to prior sale, change or withdrawal.

 **Call Affinity Real Estate**  
**218-237-3333**  
**info@affinityrealestate.com**

**Affinity Real Estate - 600 Park Avenue South - Park Rapids MN 56470**



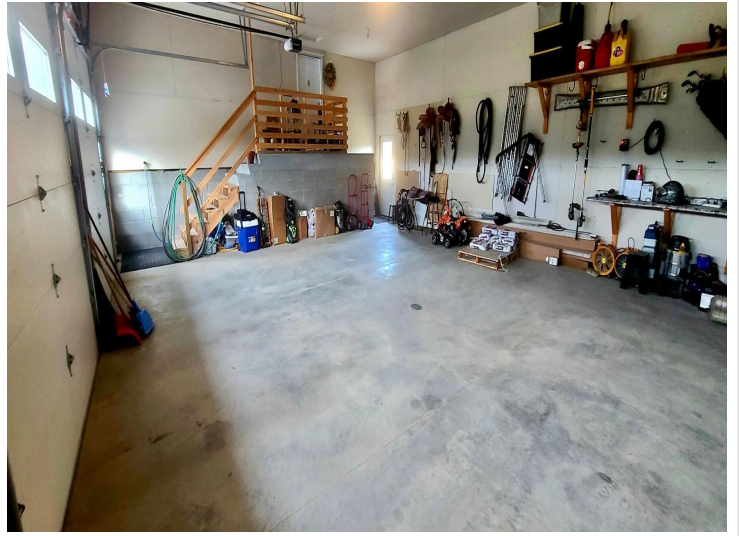
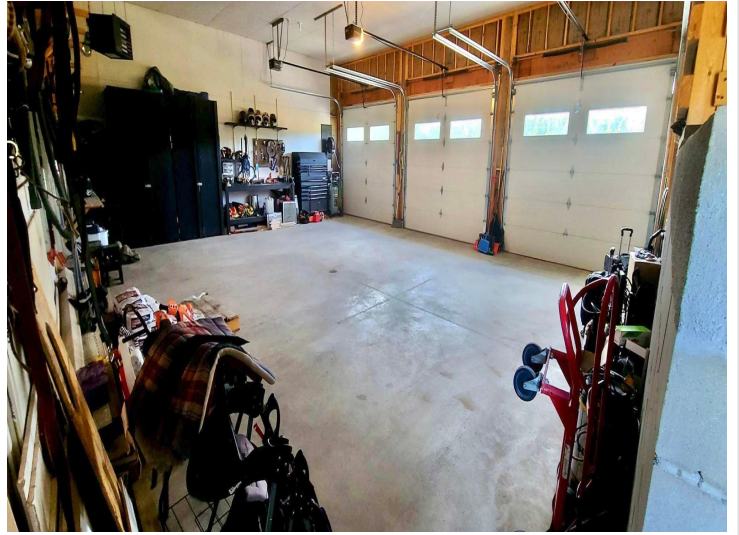


website: [www.AffinityRealEstate.com](http://www.AffinityRealEstate.com) | email: [info@affinityrealestate.com](mailto:info@affinityrealestate.com) | office: 218-237-3333 | fax:218-237-3377

**Affinity**  
REAL ESTATE INC

**\$399,900**  
MLS 6597873 Residential  
15743 County Road 31  
Menahga MN 56464





website: [www.AffinityRealEstate.com](http://www.AffinityRealEstate.com) | email: [info@affinityrealestate.com](mailto:info@affinityrealestate.com) | office: 218-237-3333 | fax:218-237-3377



**\$399,900**  
MLS 6597873 Residential  
15743 County Road 31  
Menahga MN 56464





website: [www.AffinityRealEstate.com](http://www.AffinityRealEstate.com) | email: [info@affinityrealestate.com](mailto:info@affinityrealestate.com) | office: 218-237-3333 | fax:218-237-3377



**\$399,900**  
MLS 6597873 Residential  
15743 County Road 31  
Menahga MN 56464





website: [www.AffinityRealEstate.com](http://www.AffinityRealEstate.com) | email: [info@affinityrealestate.com](mailto:info@affinityrealestate.com) | office: 218-237-3333 | fax: 218-237-3377

**Affinity**  
REAL ESTATE INC

**\$399,900**  
MLS 6597873 Residential  
15743 County Road 31  
Menahga MN 56464





website: [www.AffinityRealEstate.com](http://www.AffinityRealEstate.com) | email: [info@affinityrealestate.com](mailto:info@affinityrealestate.com) | office: 218-237-3333 | fax:218-237-3377

**Affinity**  
REAL ESTATE INC

**\$399,900**  
MLS 6597873 Residential  
15743 County Road 31  
Menahga MN 56464





website: [www.AffinityRealEstate.com](http://www.AffinityRealEstate.com) | email: [info@affinityrealestate.com](mailto:info@affinityrealestate.com) | office: 218-237-3333 | fax:218-237-3377

**Affinity**  
REAL ESTATE INC

**\$399,900**  
MLS 6597873 Residential  
15743 County Road 31  
Menahga MN 56464





website: [www.AffinityRealEstate.com](http://www.AffinityRealEstate.com) | email: [info@affinityrealestate.com](mailto:info@affinityrealestate.com) | office: 218-237-3333 | fax:218-237-3377

**Affinity**  
REAL ESTATE INC

**\$399,900**  
MLS 6597873 Residential  
15743 County Road 31  
Menahga MN 56464





website: [www.AffinityRealEstate.com](http://www.AffinityRealEstate.com) | email: [info@affinityrealestate.com](mailto:info@affinityrealestate.com) | office: 218-237-3333 | fax:218-237-3377

**Affinity**  
REAL ESTATE INC

**\$399,900**  
MLS 6597873 Residential  
15743 County Road 31  
Menahga MN 56464





website: [www.AffinityRealEstate.com](http://www.AffinityRealEstate.com) | email: [info@affinityrealestate.com](mailto:info@affinityrealestate.com) | office: 218-237-3333 | fax:218-237-3377

**Affinity**  
REAL ESTATE INC

**\$399,900**  
MLS 6597873 Residential  
15743 County Road 31  
Menahga MN 56464





website: [www.AffinityRealEstate.com](http://www.AffinityRealEstate.com) | email: [info@affinityrealestate.com](mailto:info@affinityrealestate.com) | office: 218-237-3333 | fax:218-237-3377



**\$399,900**  
MLS 6597873 Residential  
15743 County Road 31  
Menahga MN 56464