



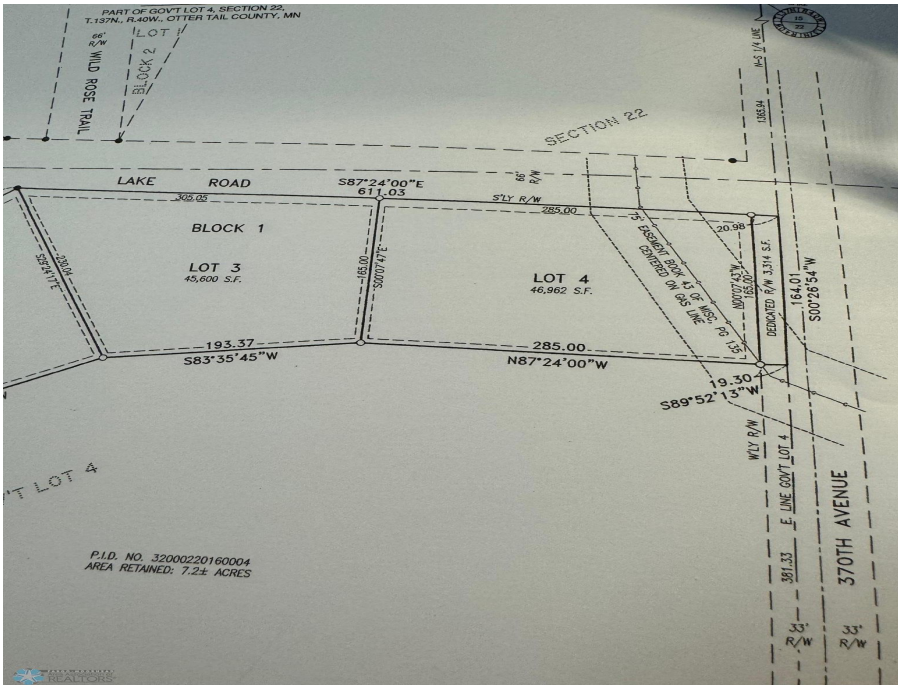
MLS 6598502 Land

\$45,000

1.08 Square Feet
Site Plan Approved

4 East Rose Lake Road
Frazee MN 56544

Status: Active



Description:

Seller is a licensed realtor.
Rare opportunity to own a back lot on Rose Lake.

Additional Details:

Lot Acres	1.08
Lot Dimensions	285 x 165
School District	549
Taxes	(unreported)
Taxes with Assessments	(unreported)
Tax Year	2024

Additional Features:

Driving Directions:



Listed By:
RE/MAX Legacy Realty

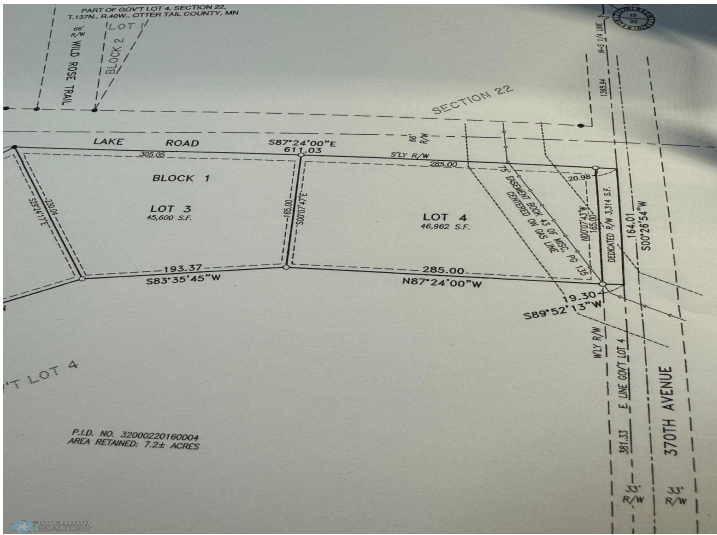
Affinity Real Estate Inc. participates in the Regional Multiple Listing Service of Minnesota, Inc Broker Reciprocity (sm) program, allowing us to display other broker's listings on our website. All properties are subject to prior sale, change or withdrawal.



Call Affinity Real Estate
218-237-3333
info@affinityrealestate.com



Affinity Real Estate - 600 Park Avenue South - Park Rapids MN 56470



website: www.AffinityRealEstate.com | email: info@affinityrealestate.com | office: 218-237-3333 | fax: 218-237-3377



\$45,000
MLS 6598502 Land
4 East Rose Lake Road
Frazee MN 56544