



MLS 6600241 Lake Home

\$1,100,000

1,008 sq ft
2 bedrooms
1 baths

37622 County Road 15
Pine River MN 56474

Waterfront: Pine River

Status: Active

Description:

The opportunity to purchase land like this does not come around often. Over 73 acres on the Pine River with easy access to Upper Whitefish lake and the awesome Whitefish chain of lakes. Mostly high dry land with a gradual slope going down to a beautiful point that goes out to the winding river. A truly magical place that only comes around every few generations. Don't miss out!!! Power is ran all the way to the water for future development or camping. The Deer hunting is Legendary.

Additional Details:

Year Built	1994
Lot Acres	73
Lot Dimensions	Irregular
Garage Stalls	3
School District	2174
Taxes	\$1,072
Taxes with Assessments	\$1,072
Tax Year	2023

Additional Features:

Basement: Slab **Fuel:** Propane **Garage:** 3 **Heat:** Baseboard, Forced Air **Sewer:** Tank with Drainage Field **Water:** Well **Air Conditioning:** Wall Unit(s)

Driving Directions:

On CR-15 going East, property is on the right



Listed By:
JPW Realty

Affinity Real Estate Inc. participates in the Regional Multiple Listing Service of Minnesota, Inc Broker Reciprocity (sm) program, allowing us to display other broker's listings on our website. All properties are subject to prior sale, change or withdrawal.



Call Affinity Real Estate

218-237-3333

info@affinityrealestate.com



Affinity Real Estate - 600 Park Avenue South - Park Rapids MN 56470



website: www.AffinityRealEstate.com | email: info@affinityrealestate.com | office: 218-237-3333 | fax:218-237-3377



\$1,100,000
MLS 6600241 Lake Home
37622 County Road 15
Pine River MN 56474



website: www.AffinityRealEstate.com | email: info@affinityrealestate.com | office: 218-237-3333 | fax:218-237-3377



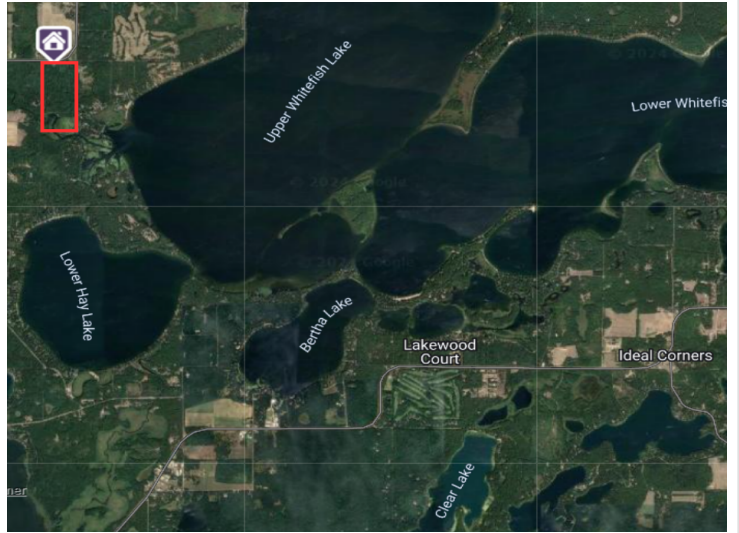
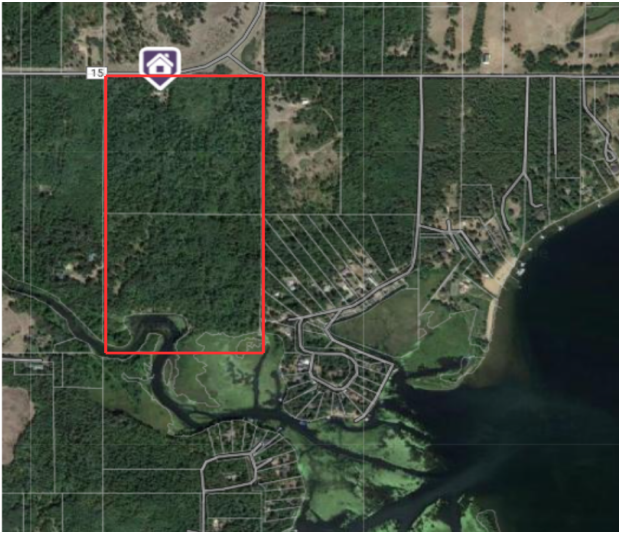
\$1,100,000
MLS 6600241 Lake Home
37622 County Road 15
Pine River MN 56474



website: www.AffinityRealEstate.com | email: info@affinityrealestate.com | office: 218-237-3333 | fax:218-237-3377

Affinity
REAL ESTATE INC

\$1,100,000
MLS 6600241 Lake Home
37622 County Road 15
Pine River MN 56474



website: www.AffinityRealEstate.com | email: info@affinityrealestate.com | office: 218-237-3333 | fax: 218-237-3377



\$1,100,000
MLS 6600241 Lake Home
37622 County Road 15
Pine River MN 56474



website: www.AffinityRealEstate.com | email: info@affinityrealestate.com | office: 218-237-3333 | fax:218-237-3377



\$1,100,000

MLS 6600241 Lake Home
37622 County Road 15
Pine River MN 56474