



MLS 6600666 Lake Home

\$437,000

1,216 sq ft
2 bedrooms
2 baths

2114 Birchmont Drive
Bemidji MN 56601

Waterfront: Bemidji (main lake)

Status: Active

Description:

Discover your perfect lakeside retreat with this charming 2-bedroom, 2-bathroom home. Enjoy stunning lake views and direct access to the beautiful shoreline right from your doorstep. Whether you're relaxing by the water or entertaining guests, enjoy all that Lake Bemidji has to offer. You'll appreciate the convenience of this centrally located lake home that is within walking distance to parks, restaurants, schools, local sporting events, and shopping. The attached garage adds convenience and extra storage to this serene setting. Don't miss out on this unique opportunity to own a slice of paradise!

Additional Details:

Year Built	1920
Lot Acres	0.31
Lot Dimensions	70x180
Garage Stalls	1
School District	31
Taxes	\$5,344
Taxes with Assessments	\$5,344
Tax Year	2023

Additional Features:

Basement: Partial **Fuel:** Natural Gas **Garage:** 1 **Heat:** Forced Air **Sewer:** City Sewer/Connected **Water:** City Water/Connected **Air Conditioning:** Central Air

Driving Directions:

#2114 Birchmont dr ne



Listed By:
Grimes Realty

Affinity Real Estate Inc. participates in the Regional Multiple Listing Service of Minnesota, Inc Broker Reciprocity (sm) program, allowing us to display other broker's listings on our website. All properties are subject to prior sale, change or withdrawal.



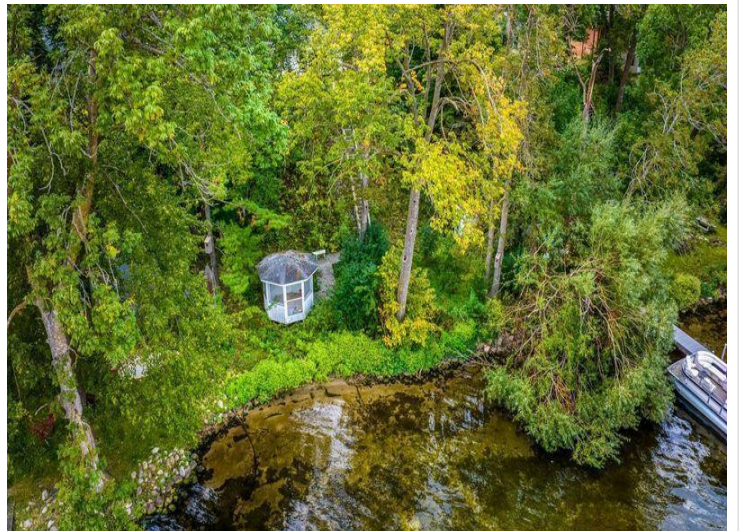
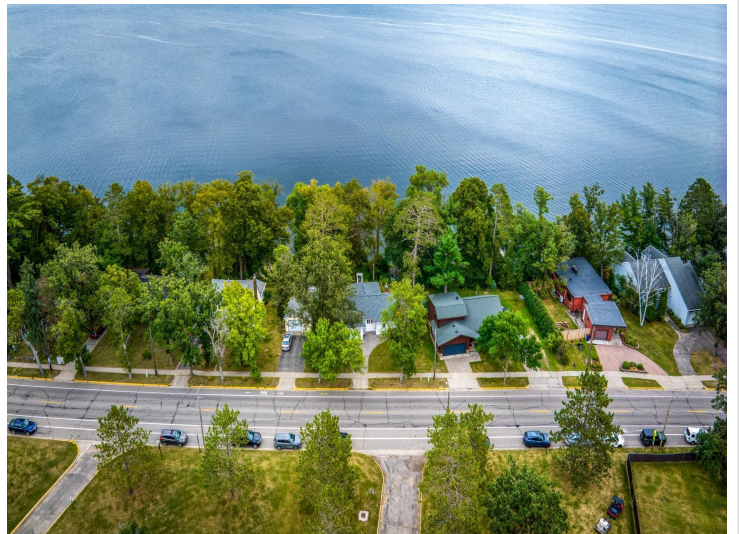
Call Affinity Real Estate

218-237-3333

info@affinityrealestate.com



Affinity Real Estate - 600 Park Avenue South - Park Rapids MN 56470



website: www.AffinityRealEstate.com | email: info@affinityrealestate.com | office: 218-237-3333 | fax:218-237-3377

Affinity
REAL ESTATE INC

\$437,000
MLS 6600666 Lake Home
2114 Birchmont Drive
Bemidji MN 56601



website: www.AffinityRealEstate.com | email: info@affinityrealestate.com | office: 218-237-3333 | fax:218-237-3377



\$437,000
MLS 6600666 Lake Home
2114 Birchmont Drive
Bemidji MN 56601



website: www.AffinityRealEstate.com | email: info@affinityrealestate.com | office: 218-237-3333 | fax:218-237-3377

Affinity
REAL ESTATE INC

\$437,000
MLS 6600666 Lake Home
2114 Birchmont Drive
Bemidji MN 56601



website: www.AffinityRealEstate.com | email: info@affinityrealestate.com | office: 218-237-3333 | fax:218-237-3377

Affinity
REAL ESTATE INC

\$437,000
MLS 6600666 Lake Home
2114 Birchmont Drive
Bemidji MN 56601



website: www.AffinityRealEstate.com | email: info@affinityrealestate.com | office: 218-237-3333 | fax:218-237-3377

Affinity
REAL ESTATE INC

\$437,000
MLS 6600666 Lake Home
2114 Birchmont Drive
Bemidji MN 56601



website: www.AffinityRealEstate.com | email: info@affinityrealestate.com | office: 218-237-3333 | fax:218-237-3377



\$437,000
MLS 6600666 Lake Home
2114 Birchmont Drive
Bemidji MN 56601



website: www.AffinityRealEstate.com | email: info@affinityrealestate.com | office: 218-237-3333 | fax:218-237-3377

Affinity
REAL ESTATE INC

\$437,000
MLS 6600666 Lake Home
2114 Birchmont Drive
Bemidji MN 56601



website: www.AffinityRealEstate.com | email: info@affinityrealestate.com | office: 218-237-3333 | fax:218-237-3377



\$437,000
MLS 6600666 Lake Home
2114 Birchmont Drive
Bemidji MN 56601