



MLS 6600785 Lake Land

**\$28,000**

**Description:**

Wooded lot in Breezy Point with deeded access to Ossawinnamakee Lake! Located in the heart of the Lakes Area on the corner of County Road 11 and Peony Lane, this lot is approximately .5 acre in size and just a short distance away from Ossawinnamakee Lake, Pelican Lake and the Whitefish Chain! The deeded access to Ossawinnamakee Lake is a walking path down to a shared day dock. Convenient location just minutes away from great restaurants, shopping, a medical clinic, ice arena and premier golf courses! This lot is located on a minimum maintenance road. Please contact the city of Breezy Point for questions on buildability and permitting.

**Additional Details:**

Lot Acres	0.5
Lot Dimensions	150 x 150 x 105 x 50 x 125
School District	186
Taxes	\$160
Taxes with Assessments	\$160
Tax Year	2026

**Additional Features:**

**Driving Directions:**

From the Breezy Point gates, go north on County Road 11 for approximately 3 miles to Peony Lane. The lots are on the corner of Peony Lane and County Road 11.



Listed By:  
Larson Group Real Estate/Kelle

Affinity Real Estate Inc. participates in the Regional Multiple Listing Service of Minnesota, Inc Broker Reciprocity (sm) program, allowing us to display other broker's listings on our website. All properties are subject to prior sale, change or withdrawal.



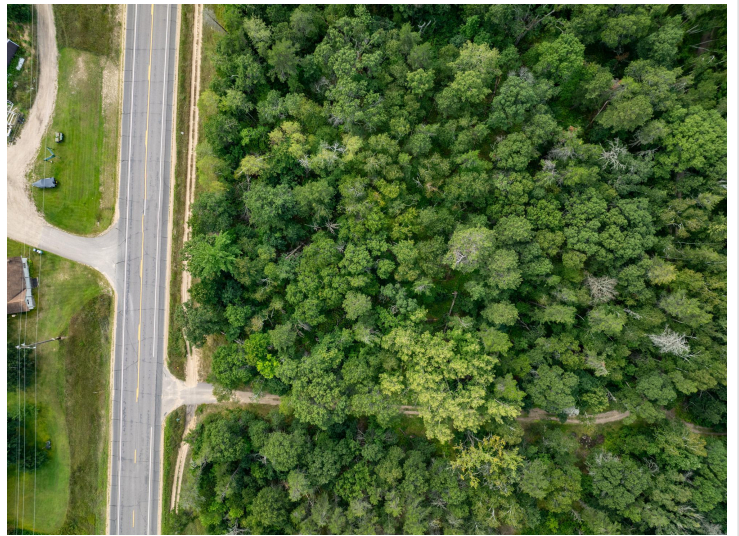
**Call Affinity Real Estate**

**218-237-3333**

**info@affinityrealestate.com**



**Affinity Real Estate - 600 Park Avenue South - Park Rapids MN 56470**



website: [www.AffinityRealEstate.com](http://www.AffinityRealEstate.com) | email: [info@affinityrealestate.com](mailto:info@affinityrealestate.com) | office: 218-237-3333 | fax:218-237-3377



**\$28,000**  
MLS 6600785 Lake Land  
TBD Peony Lane  
Breezy Point MN 56472